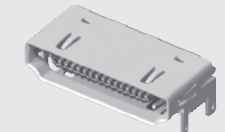




HDMR-19-02-S-SM



HDMR-29-01-S-SM

HDMR SERIES

HIGH-SPEED I/O RECEPTACLES

SPECIFICATIONS

For complete specifications and recommended PCB layouts see www.samtec.com?HDMR

Insulator Material:

High Temperature Thermoplastic

Contact Material:

Copper Alloy

Shell Material:

Steel

Operating Temp Range:

-25 °C to +85 °C

Plating:

Gold on Contacts, Nickel on Shell and Tin on Tails

Current Rating:

1.3 A per pin
(6 adjacent pins powered)

Voltage Rating:

40 VAC

Minimum Cycles:

100

Lead-Free Solderable:

Yes

RoHS Compliant:

Yes

Meets Digital Display Working Group Single Monitor Interface Specifications

Optional Panel Flange (19 position only)

Hot Pluggable

Selectively Plated

19 or 29 Positions

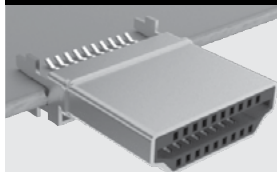
Surface Mount or Through-hole Signal Leads

Through-hole or Surface Mount (19 only) Ground tails

RUGGEDIZED
BY SAMTEC

- Panel flange option
- Locking option

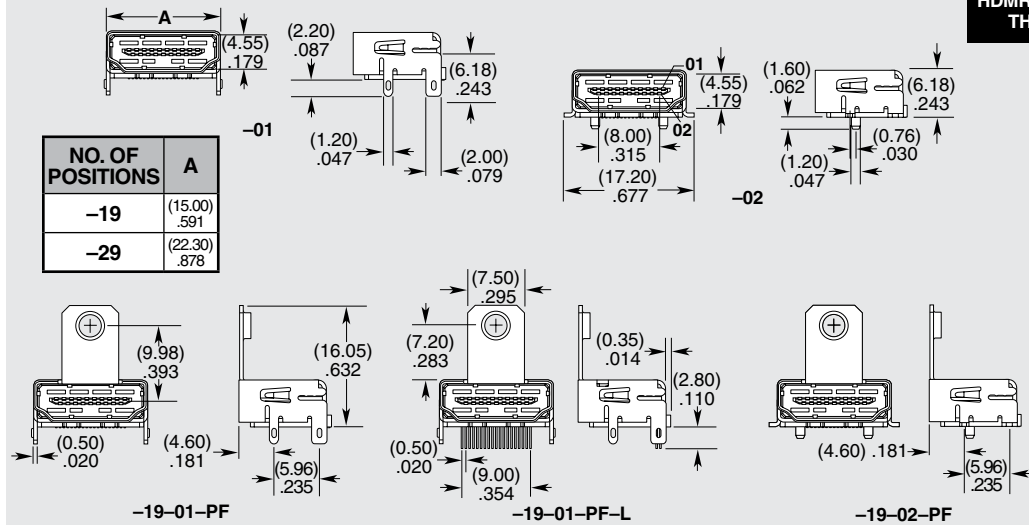
OTHER SOLUTIONS



HDMP is an Edge Mount plug that mates to HDMR receptacles.

Call Samtec for HDMP Series specifications.

| HDMR | NO. OF POSITIONS | LEAD STYLE | PLATING | TAIL OPTION | OPTIONS |
|------|---------------------------------------------------------|-------------------------------------------------------|------------------------------------------------------------------|-----------------------------------------------------------------------|------------------------------------------------------------------------|
| | -19 = 19 Positions / Mates with HPXXX 5 Pairs | -01 = Through-hole Ground Tails | -S = 30 μm (0.76 μm) Gold on Mating Area, Tin on Tails | -SM = Surface Mount (Signal Leads) | (Leave Blank for no Panel Flange) |
| | -29 = 29 Positions / Mates with HPXXX 8 Pairs | -02 = Surface Mount Ground Tails (-19 only) | | -TH = Through-hole (Only available on HDMR-19-01-X-TH-PF-L) | -PF = Panel Flange |
| | | | | | -L = Locking Option (Only available on HDMR-19-01-X-TH-PF-L) |



Note: Some lengths, styles and options are non-standard, non-returnable.

Due to technical progress, all designs, specifications and components are subject to change without notice.

WWW.SAMTEC.COM

All parts within this catalog are built to Samtec's specifications. Customer specific requirements must be approved by Samtec and identified in a Samtec customer-specific drawing to apply.