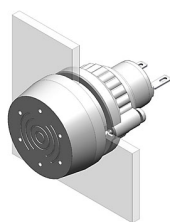


14-810.002 - Buzzer



Attention: The preview is based on a sample product. This can differ from your current configuration.

Mounting

Mounting cut-out Design \varnothing 22,3 mm raised

Front

Front shape round
Front dimension \varnothing 29 mm
Front cap colour black
Front cap material Plastic

Other Attributes

Weight 0,016 kg
Operating voltage 24 V DC

IP-Rating

Front protection IP65

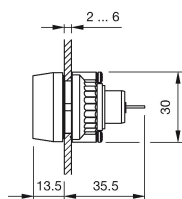
Connection Method

Terminal Solder 2.8 x 0.5 mm

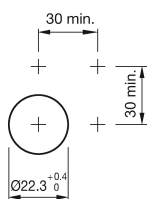
Function

Buzzer

Dimensions



Mounting cut-outs



Wiring diagram

