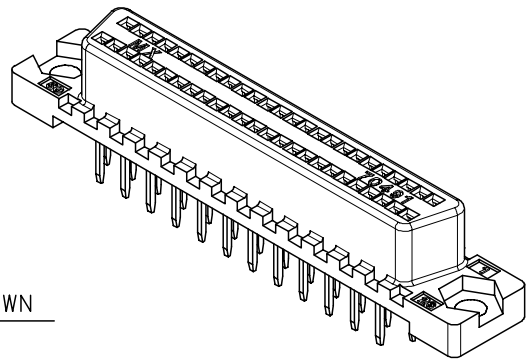
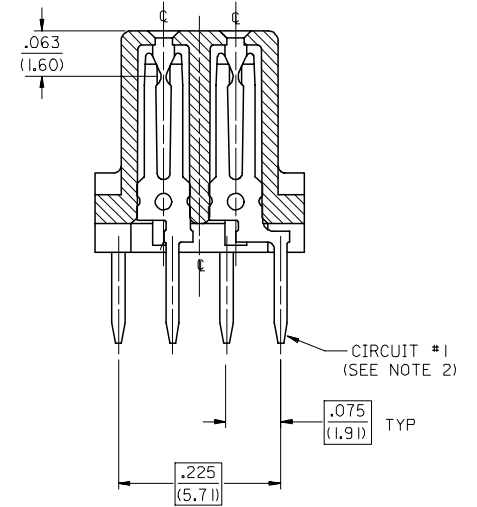
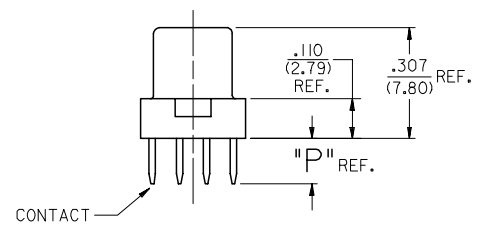
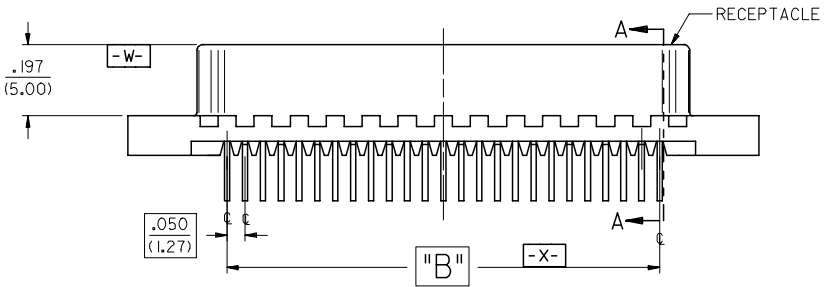
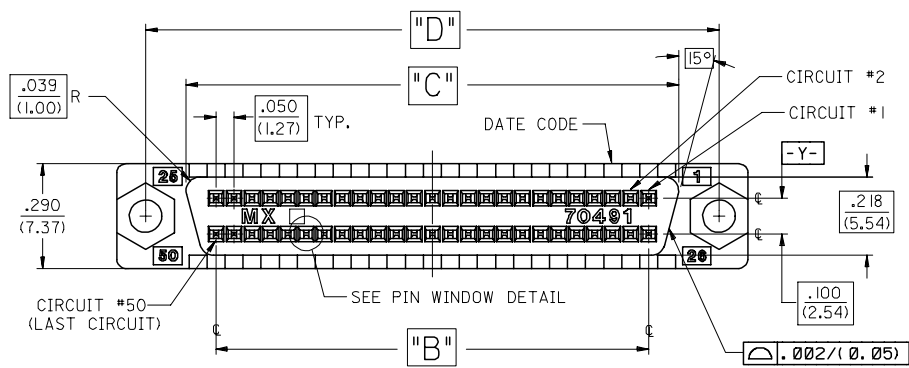


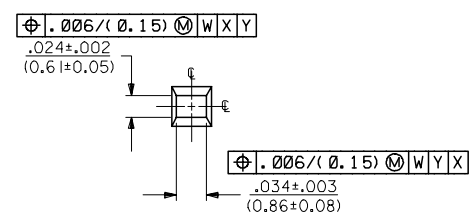
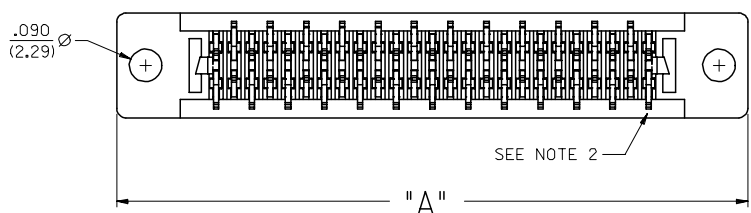
MAT'L NO.	CKT. SIZE	DIM. A		DIM. B		DIM. C		DIM. D		DIM. P TAIL LENGTH	RECOMMENDED PCB	
		INCH	MM	INCH	MM	INCH	MM	INCH	MM		INCH	MM
71163-1001	50	1.750	44.45	1.200	30.48	1.366	34.70	1.590	40.39	.125	.062 OR .093	1.57 OR 2.36
71163-1002	68	2.200	55.88	1.650	41.91	1.816	46.13	2.040	51.82	.125	.062 OR .093	1.57 OR 2.36
71163-1003	50	1.750	44.45	1.200	30.48	1.366	34.70	1.590	40.39	.080	.062	1.57
	68	2.200	55.88	1.650	41.91	1.816	46.13	2.040	51.82	.080	.062	1.57
71163-1005	50	1.750	44.45	1.200	30.48	1.366	34.70	1.590	40.39	.060	.062	1.57



50 CIRCUIT SHOWN



SECTION "A-A"  
SCALE 8:1



PIN WINDOW DETAIL  
SCALE 10:1

**NOTES:**

- SEE SHEET 2 FOR NOTES, MATERIAL, PACKAGING, AND PS SPEC.
- TAIL PATTERN FIXED AT CIRCUIT NO. (1) POSITION FOR ALL CIRCUIT SIZES SHOWN.

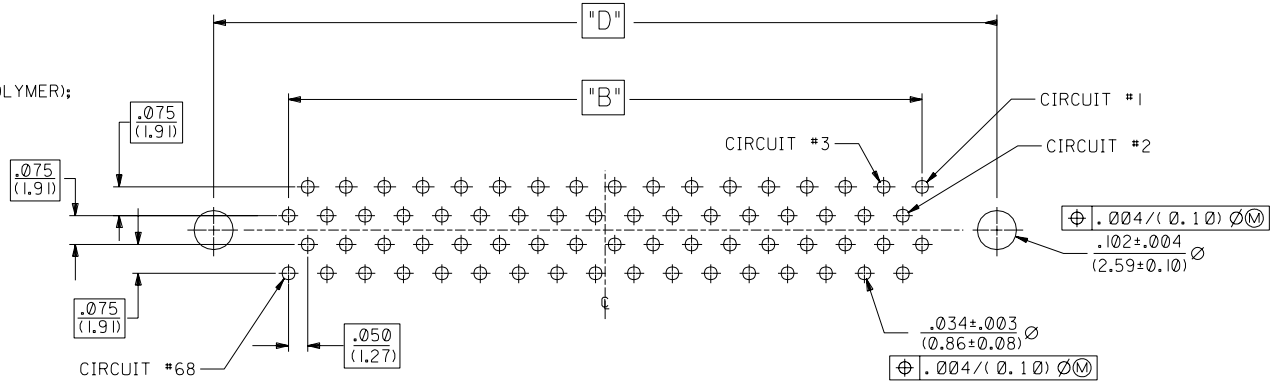
REMOVE OBSOLETE #S FC NO. UICP2006-2901 DRAWN:MS BARRA 2006/06/12 CHKD:BBARKER 2006/06/12 APPR:SMILLER 2006/06/14	QUALITY SYMBOLS ▽=0 ▽=0	GENERAL TOLERANCES (UNLESS SPECIFIED)	DIMENSION STYLE IN/MM	SCALE 4:1	DESIGN UNITS INCH	THIRD ANGLE PROJECTION
		4 PLACES ± --- ± ---	DRAWN BY JLONG	DATE 1995/02/08	TITLE SALES ASSEMBLY SCSI RECEPTACLE WITH HEX ENDS	
		3 PLACES ± --- ± .005	CHECKED BY JLONG	DATE 1995/02/08	MATERIAL NO. SDA-71163-10**	
		2 PLACES ± 0.13 ± ---	APPROVED BY DJB	DATE 1995/02/08	SHEET NO. 1 OF 2	
1 PLACE ± --- ± ---	ANGULAR ±1/2°	DRAFT WHERE APPLICABLE MUST REMAIN WITHIN DIMENSIONS	SEE TABLE	THIS DRAWING CONTAINS INFORMATION THAT IS PROPRIETARY TO MOLEX INCORPORATED AND SHOULD NOT BE USED WITHOUT WRITTEN PERMISSION		

2	E
1	F
SHT	REV

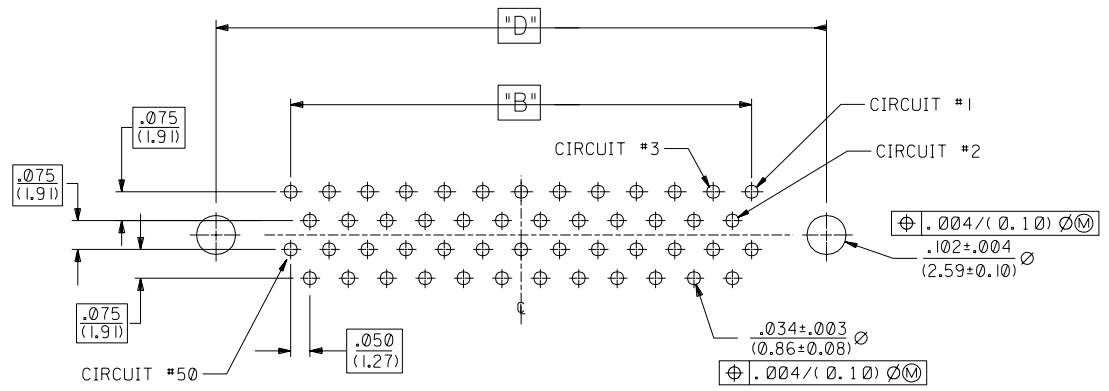
**NOTES:**

1. REFER TO PS-79058 PRODUCT SPEC. FOR ELECTRICAL, MECHANICAL AND ENVIRONMENTAL SPECIFICATIONS.
2. MATERIAL:  
RECEPTACLE HOUSING: GLASS FILLED LCP (LIQUID CRYSTAL POLYMER); COLOR-BLACK; UL 94V-0
3. PACKAGING:  
PARTS PACKAGED IN TUBES PER PK-70873-0427
4. PLATING:  
SELECTIVE GOLD:  
THICKNESS= 30 MICROINCHES/(0.76 MICROMETERS) MINIMUM.  
SELECTIVE TIN:  
THICKNESS= 75 MICROINCHES/(1.90 MICROMETERS) MINIMUM.  
NICKEL UNDERPLATE OVERALL.

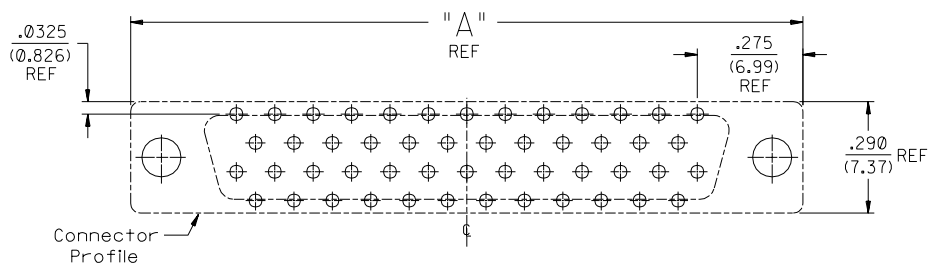
NOTE FOR LEAD FREE CONVERSION:  
THE PRIMARY SHIPPING CARTON WILL BE LABELED "COMPLIANT TO ROHS DIRECTIVE 2002/95/EC AND ELV ANNEX II OF DIRECTIVE 2000/53/EC". CARTONS WITHOUT THIS LABEL MAY CONTAIN PRODUCT WITH LEAD.



TYPE 168 CKT P.C. BOARD LAYOUT  
CONNECTOR SIDE



TYPE 150 CKT P.C. BOARD LAYOUT  
CONNECTOR SIDE



RECOMMENDED CONNECTOR LAYOUT

MFG. SH. REV.		REVISIONS		DIMENSIONS SHOWN (METRIC) INCH		UNLESS OTHERWISE SPECIFIED TOLERANCES: ANGULAR ± 1/2°		REVISE ONLY ON CAD SYSTEM	
				INCH METRIC				TITLE	
		D	SEE SHEET 1	3 PLACE ± .005	---			SALES ASSEMBLY SCSI RECEPTACLE WITH HEX ENDS	
		B	SEE SHEET 1	2 PLACE ± ---	± 0.13			MOLEX INCORPORATED	
		E	SEE SHEET 1	1 PLACE ---	± ---			LITSE, ILL. 60532 U.S.A.	
LTR.	REVISIONS	LTR.	REVISIONS	DRAFT WHERE APPLICABLE MUST REMAIN WITHIN DIMENSIONS		PART NO.		SHEET NO. DATE	
				DRAWN BY: J. Long		SEE SHEET 1		2 95/02/08	
				CHK'D BY: J. Long		SDA-71163-10**		MOLEX INC. AND SHOULD NOT BE USED WITHOUT WRITTEN PERMISSION.	
				APPR'D. BY:		FILE NAME: 571163A2.DGN		DIV. SIZE: TC C	