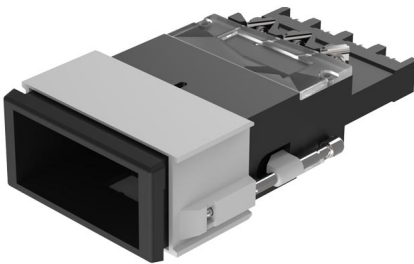


# EAO – Your Expert Partner for Human Machine Interfaces

## 03-617.011 - Illuminated pushbutton actuator single-headed

### 03-617.011 - Illuminated pushbutton actuator single-headed



*Attention: The preview is based on a sample product. This can differ from your current configuration.*

#### Mounting

Mounting cut-out  
Design 21,2 mm x 41,2 mm  
flush

#### Front

Front dimension 24 mm x 48 mm  
Front bezel colour black  
Front bezel material Plastic  
Front shape rectangular

#### Other Attributes

Weight 0,075 kg

#### Operating-/Indication part

Lens illumination illuminative

#### IP-Rating

Front protection IP40

#### Connection Method

Terminal Screw terminal

#### Actuator

Switching action Momentary  
Housing colour black  
Housing material Plastic

#### Switching element

Switching system Snap-action switching element  
Contacts 2 C  
Switching voltage 400 V AC  
Switching current 10 A  
Contact material Silver

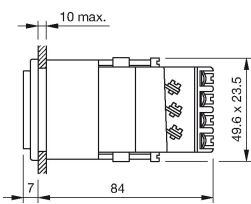
#### Function

Illuminated pushbutton

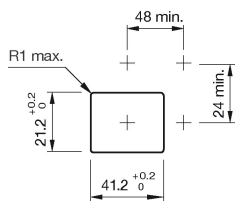
# EAO – Your Expert Partner for Human Machine Interfaces

03-617.011 - Illuminated pushbutton actuator single-headed

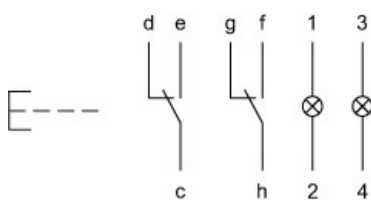
## Dimensions



## Mounting cut-outs



## Wiring diagram



## Additional information

Has two independent lamp bases  
Light barrier ordered separately

## Legend

Contacts: C = Changeover  
Switching action: B = Momentary