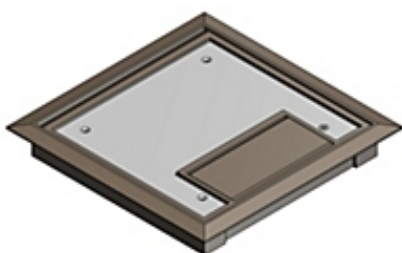


Actual



Representative

Catalog Number: 665-CST-SW-BRN
Product ID: 7TAA003130R0012
UPC Number: 78599103270
Status: Active

Cover for 665 Series Boxes, Brown, Polycarbonate with 5/32 Inch Steel Plate, Load Rating 750 Pounds

- Factory installed gaskets reduce installation time
- Recessed cover plate accepts tile or carpet to blend into existing floor.
- Dust gasket on the cord shields the floor box from dust and debris.
- Lid snaps securely shut and does not require a locking screw
- Cord can be locked in the open position to protect power and data cables.

Header

3D Model Available on Website

North American Specifications (UNSPSC)

UNSPSC	39121307 Floor boxes
IGCC	4432 Floor boxes
Brand Name	Steel City
Type	Recessed Service
Special Features	Factory installed gaskets reduce installation time
Application	For use with 665 and AFM 4 series floor boxes
Standard	UL E2969
Material	Non-Metallic
Color	Brown
Knockouts	No

European Specifications (ETIM)

ETIM	EC001906 Mounting cover for underfloor draw-in box
Mounting opening	Rectangular
Cover mounting opening	Y
Floor maintenance	Dry
Material	Other

Packaging

Inner Quantity	1
Inner Dimensions (inches)	9.5x10x1.5
Outer Quantity	4
Outer Dimensions (inches)	10.75x10.3x8.9
Weight Uom	265 lbs. per 100

Documents / Support Tools

Technical Data Sheet CA	Available on Website
Technical Data Sheet Global	WSD-000058
Instruction Sheet 1	TA02623-TB2

For further technical assistance, please contact us...

Thomas & Betts - USA
 8155 T&B Blvd.
 Memphis, TN 38125
 www.tnb.com

T&B Technical Support
 MS 3B-50
 8155 T&B Blvd.
 Memphis, TN 38125

Hours: 7AM - 6PM CDT
 Monday-Friday
 Phone: (888) 862-3289
 Fax: (901) 252-1321
 Email: techsupport@tnb.com