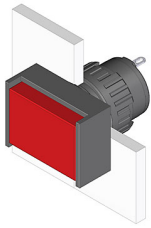


EAO – Your Expert Partner for Human Machine Interfaces

51-040.005 - Indicator actuator

51-040.005 - Indicator actuator



Attention: The preview is based on a sample product. This can differ from your current configuration.

Mounting

Mounting cut-out
Design Ø 16 mm
raised

Front

Front dimension 18 mm x 24 mm
Front shape rectangular
Front bezel colour
Front bezel material
Front cap colour
Front cap material

Other Attributes

Weight 0,004 kg

IP-Rating

Front protection IP65

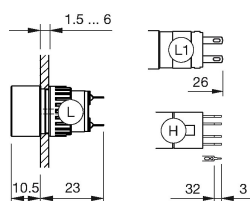
Connection Method

Terminal Solder

Function

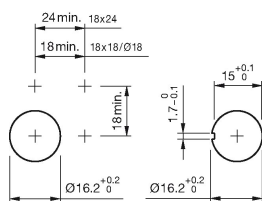
Indicator

Dimensions



H = Universal terminal 2.0 x 0.5 mm

Mounting cut-outs



Wiring diagram

