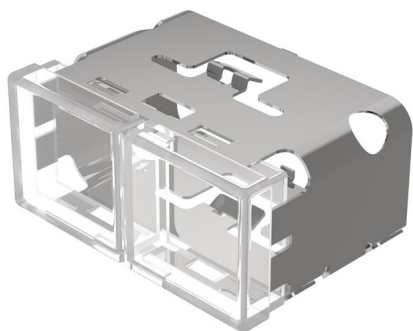


EAO – Your Expert Partner for Human Machine Interfaces

03-902.9/9 - Lens single-headed bi-colour for pushbutton single-headed

03-902.9/9 - Lens single-headed bi-colour for pushbutton single-headed



Attention: The preview is based on a sample product. This can differ from your current configuration.

Mounting

Design flush

Other Attributes

Dimension 18 x 38 mm

Weight 0,010 kg

Operating-/Indication part

Lens optics translucent

Lens material Plastic

Lens colour white-white ribbed

Lens illumination illuminative

Lens profile flat