

**PLEASE CHECK WWW.MOLEX.COM FOR LATEST PART INFORMATION**

**Part Number:** [71245-3000](#)  
**Status:** **Active**  
**Overview:** [LFH™](#)  
**Description:** LFH™ Matrix 50 Overmold Can for 60 Circuit

**Documents:**

[3D Model](#) [Application Specification AS-70929-001 \(PDF\)](#)  
[Drawing \(PDF\)](#) [RoHS Certificate of Compliance \(PDF\)](#)

**General**

Product Family	I/O Connectors
Series	<a href="#">71245</a>
Application	Wire-to-Board
Component Type	Kit
Overview	<a href="#">LFH™</a>
Product Name	LFH™
Type	N/A
UPC	800754347792

**Physical**

Circuits (Loaded)	60
Keying to Mating Part	N/A
Lock to Mating Part	None
Material - Plating Mating	N/A
Net Weight	8.770/g
Orientation	N/A
PCB Retention	N/A
Packaging Type	Bag
Panel Mount	Yes
Pitch - Mating Interface	N/A
Polarized to Mating Part	N/A
Termination Interface: Style	N/A
Wire Size AWG	N/A

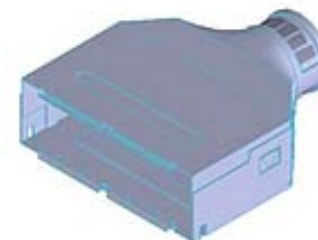
**Electrical**

Current - Maximum per Contact	N/A
Grounding to Panel	N/A

**Material Info**

**Reference - Drawing Numbers**

Application Specification	AS-70929-001
Sales Drawing	SDMS-71245-3000



*image - Reference only*

*Series*

**EU RoHS**

**ELV and RoHS  
Compliant**  
**REACH SVHC  
Contains SVHC: No**  
**Low-Halogen Status  
Low-Halogen**

**China RoHS**



**Need more information on product  
environmental compliance?**

Email [productcompliance@molex.com](mailto:productcompliance@molex.com)  
 For a multiple part number RoHS Certificate of  
 Compliance, [click here](#)

Please visit the [Contact Us](#) section for any  
 non-product compliance questions.

**Search Parts in this Series**

[71245Series](#)

**Use With**

Plug Cable Kit