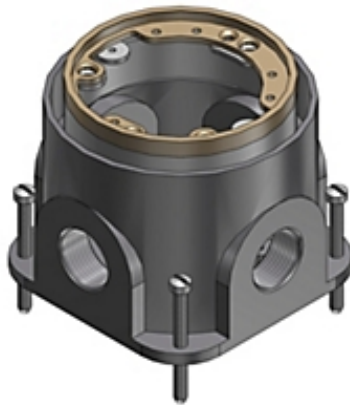




Actual



Representative

Catalog Number: 600 1SC
Product ID: 7TAA003010R0002
UPC Number: 78599161512
Status: Active

Single Gang Flush Service Floor Box, 64 Cubic Inches, Length 5-1/8 Inches, Width 4-1/4 Inches, Depth 4-1/4 Inches, Hub Size 1 Inches, Cast Iron

- Water-tight body
- Painted silver enamel inside and out for additional corrosion resistance.
- Interior and exterior leveling screws permit adjustment to meet finished floor.
- Shipped complete with expendable cap to prevent ingress of concrete during pour.

North American Specifications (UNSPSC)

UNSPSC	39121307 Floor boxes
IGCC	4432 Floor boxes
Brand Name	Steel City
Type	Flush Service
Special Features	Fully adjustable
Application	Ideal for the modern office with workstations that have power, communications and data equipment.
Standard	UL E2969
Material	Cast Iron
Cubic Capacity	64 Cubic Inches

European Specifications (ETIM)

ETIM	EC000024 Installation box for underfloor-installation
Cover model	Rectangular
Suitable for wet cleaning	N
Suitable for hollow floor	Y
Material	Other
With opening carpeting	N
Min. built-in depth	50.8mm
Colour	Other
Length external dimension	130.175mm
Width outside dimension	107.95mm

Packaging

Inner Quantity	1
Inner Dimensions (inches)	5.2x5.2x4.5
Outer Quantity	4
Outer Dimensions (inches)	11.4x6.3x10.4
Weight Uom	623.75 lbs. per 100

Documents / Support Tools

Technical Drawing / Data Sheet US	Available on Website
Technical Drawing / Data Sheet Canada	Available on Website
Support/Tools	Available on Website

For further technical assistance, please contact us...

Thomas & Betts - USA
 8155 T&B Blvd.
 Memphis, TN 38125
 www.tnb.com

T&B Technical Support
 MS 3B-50
 8155 T&B Blvd.
 Memphis, TN 38125

Hours: 7AM - 6PM CDT
 Monday-Friday
 Phone: (888) 862-3289
 Fax: (901) 252-1321
 Email:techsupport@tnb.com