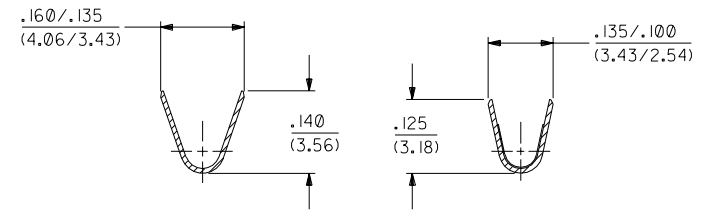
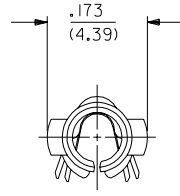


PART NO.	ENG. NO.	
02-09-1208	6271-(P901)	
02-09-1212	6271-(P901)L	
02-09-5207	6271-A(P565)	OBSOLETE
02-09-5208	6271-A(P565)L	OBSOLETE
	-	
	-	
	-	
	-	



SECTION "A-A" **SECTION "B-B"**

LEGEND

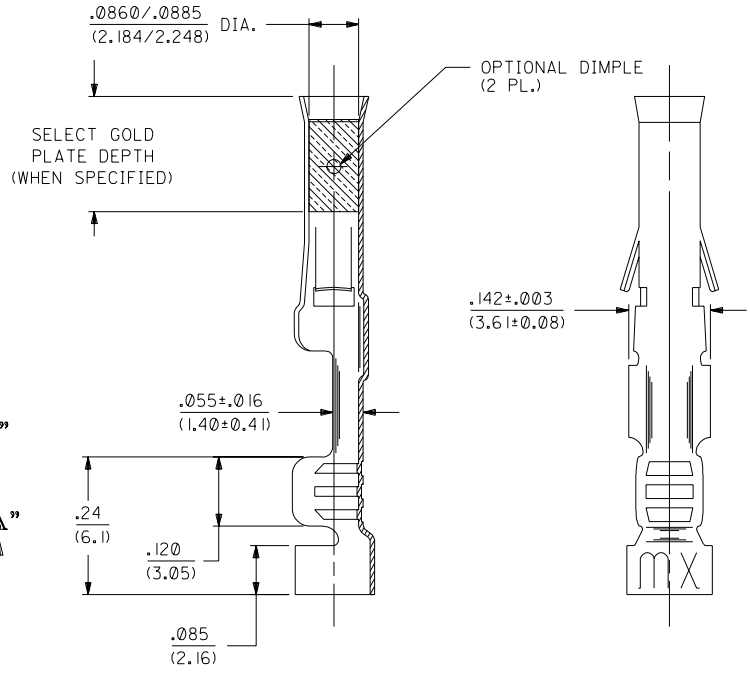
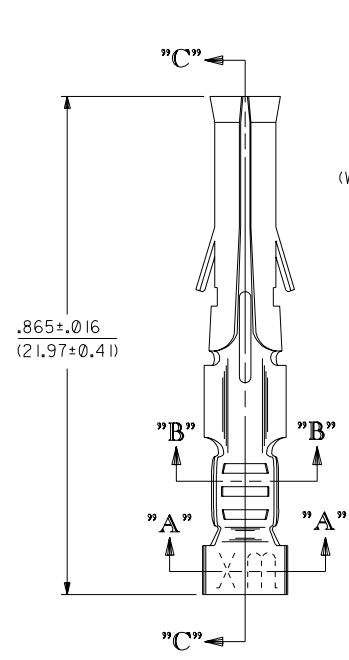
6271-*(****)*

OPTIONAL DIMPLE
BLANK=WITH DIMPLE
A=WITHOUT DIMPLE

P=PREPLATE
BLANK=POSTPLATE

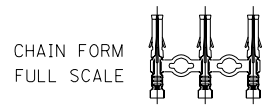
FORM
BLANK=CHAIN
L=LOOSE

FINISH CODE



SECTION "C-C"

- NOTES:
- MATERIAL: PHOSPHOR BRONZE
 - FINISHES:
 - 901 HOT TIN DIP .000020/(0.0005) MIN.
 - 565 SELECT GOLD PLATE .000020/(0.0005) MIN. IN CONTACT AREA, OVER .000030/(0.00076) MIN. NICKEL OVERALL WITH .000010/(0.00025) MAX. GOLD FLASH OVERALL.
 - THIS PART CONFORMS TO PRODUCT SPEC. 02-09.
 - TERMINAL FOR USE WITH .093/(2.36) SERIES HOUSINGS AND WILL ACCEPT 18 THRU 22 AWG WIRE.
 - INSERTION FORCE: 2.0 LBS. AVG. WHEN TERMINAL IS INSERTED INTO AN .093 SERIES HOUSING.
 - RETENTION: 20 LBS. MIN. FROM HOUSING.



C	REV. BARREL ID UCP#2003-0819 SMITH 12/09/20
B	OBSOLETE P/N UCP#2002-0270 COMERCI 01/10/4
A	FINAL RELEASE ECR 01/07/22 GIC 4/16/91 RW

DIMENSIONS SHOWN (METRIC) INCH		▽ = 0		◻ = 0		REVISE ONLY ON CAD SYSTEM	
UNLESS OTHERWISE SPECIFIED TOLERANCES: ANGULAR ± 1/2°							
INCH		METRIC					
3 PLATE	± .010	---					
2 PLATE	± .014	± 0.25					
1 PLATE	---	± 0.36					
DRAFT WHERE APPLICABLE MUST REMAIN WITHIN DIMENSIONS							
DRWG. NO.	SD-6271-*	FILE NAME	506271X1.DGN	SHEET NO.	1 of 1	DATE	4/16/91
DRWG. BY	GIC	CHK'D. BY	RW	SEE CHART			
APP'D. BY	GWF	SCALE	6 : 1	THIS DRAWING CONTAINS INFORMATION THAT IS PROPRIETARY TO MOLEX INC. AND SHOULD NOT BE USED WITHOUT WRITTEN PERMISSION			