










# ITW SWITCHES SLIDE SWITCHES

Design, development and manufacture of switch solutions

-  PUSH BUTTON
-  SNAP ACTION
-  ACTUATORS
-  SLIDE
-  ROTARY
-  CUSTOM ASSEMBLIES
-  MILITARY / AEROSPACE



**ITW Switches**  
SENSORS, SWITCHES, ELECTRONIC CONTROLS



[WWW.ITWSWITCHES.COM](http://WWW.ITWSWITCHES.COM)

800.544.335

# SLIDE SWITCHES

---

**Table Of Contents** ..... ii – iii

**Series 23: Mini Mike™ Miniature** ..... 74 – 75

**Series SE1022: Double Pole Line Voltage Selector** ..... 76 – 77



## Series 023

### MINI MIKE MINIATURE SLIDE SWITCHES

This rugged, long life miniature slide switch is ideal for applications where exceptional quality and reliability are needed. Available in SPDT and DPDT configurations, these gold contact slide switches come with PC terminals.



### APPLICATIONS

- Medical controls
- Test equipment
- Datacom
- Precision instrumentation

### KEY FEATURES:

- SPDT and DPDT circuits
- Gold Contacts
- PC terminals
- Some versions UL recognized
- Temperature range: -40°C to +100°C



ACTUAL SIZE

### ORDERING INFORMATION:

Part Number	Circuit	Button Height	Terminal Configuration	Rating
<b>023-021-105</b>	SPDT	0.20	2	250 mA @ 30 VDC
<b>023-021-114</b>	DPDT	0.20	3	100 mA @ 125 VDC
<b>023-021-304 *</b>	SPDT (Form Z)	0.14	4	500 mA @ 30 VDC

\* UL recognized 0.5 A @ 125 VAC, 75 VDC

### STANDARDS / AGENCY / RATINGS:



## MECHANICAL / ELECTRICAL CHARACTERISTICS:

### Circuit:

SPDT (023-021-105) (Form C)  
 DPDT (023-021-114) (Form CC)  
 SPDT-DB (023-021-304) (Form Z)

### Operating force:

200-500 grams (023-021-114)  
 100-500 grams (023-021-105 & 304)

### Electrical rating:

100 milliamps 125 VDC (023-021-114)  
 250 milliamps 30 VDC (023-021-105)  
 0.5 amp 125 VAC (023-021-304)

### Contact resistance:

20 milliohms max initially

### Temperature rating:

-40°F to 212°F  
 (-40°C to 100°C)

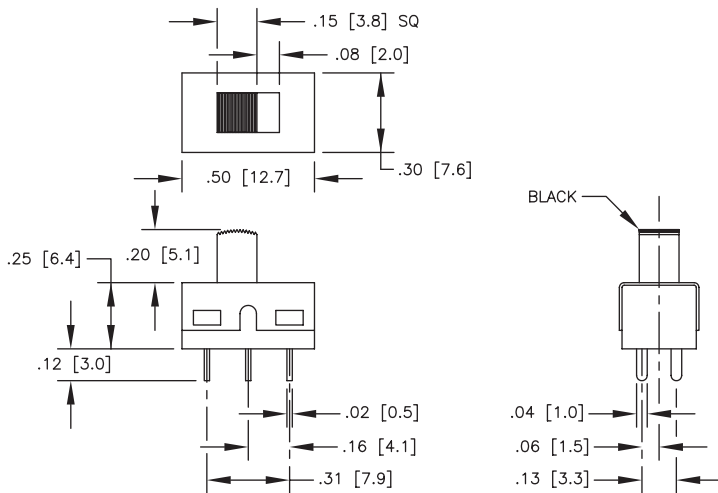
### Life:

100,000 actuations

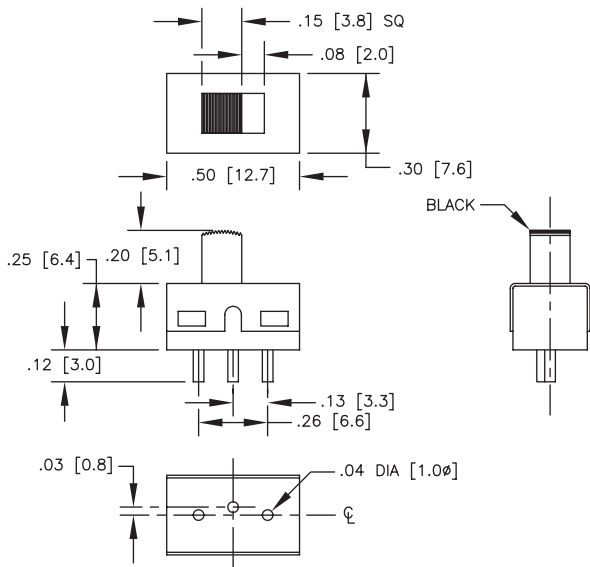
### Contact material:

hard gold over barrier

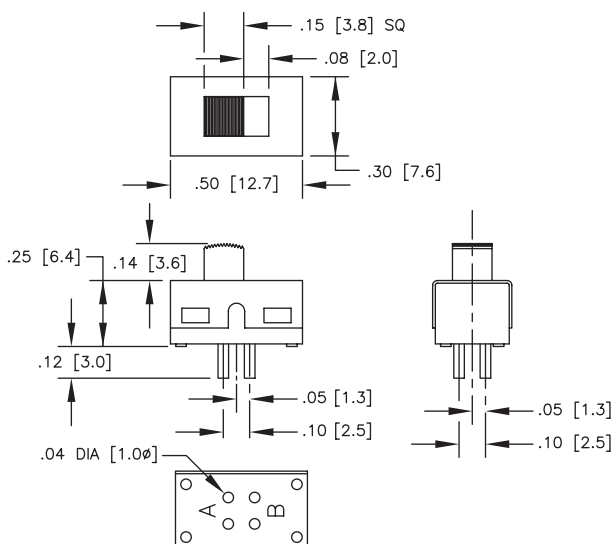
## 023-021-114



## 023-021-105



## 023-021-304



## Series SE1022

### DOUBLE POLE LINE VOLTAGE SELECTOR SWITCHES

This rugged fully enclosed housing is built for tough applications. The positive detect action, status indication and variety of contact configurations make this series ideal for a variety of needs.

### APPLICATIONS

- Consumer power supplies
- Lower cost dual use power supplies

### KEY FEATURES:

- Status indication: variety of markings available
- Variety of terminal styles
- Electrical life: 10,000 cycles
- UL recognized and CSA certified and VDE approved
- Variety of mounting styles
- Silver plated contacts



ACTUAL SIZE

### ORDERING INFORMATION:

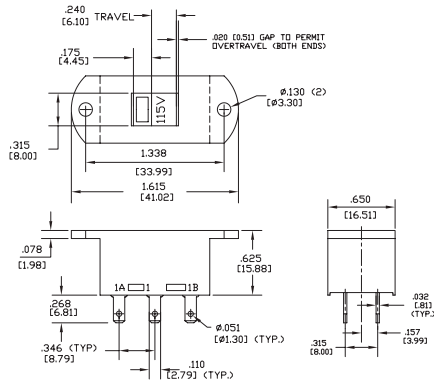
Part Number	Terminals	Dimensions	Marking
18-000-0016	.110 quick connect	1.615 L x .650 W x .625 H	230V/115V
18-000-0019	Right angle	1.030 L x .650 W x .625 H	230V/115V
18-000-0022	PC	1.030 L x .650 W x .625 H	230V/115V
18-000-0040	.110 quick connect	Snap in: .677 x 1.240 Cut out *	230V/115V

\* It is recommended that panel thickness range from .015 to .125" (.038 to 3.18 mm) with switch cut-out punched from front of panel.

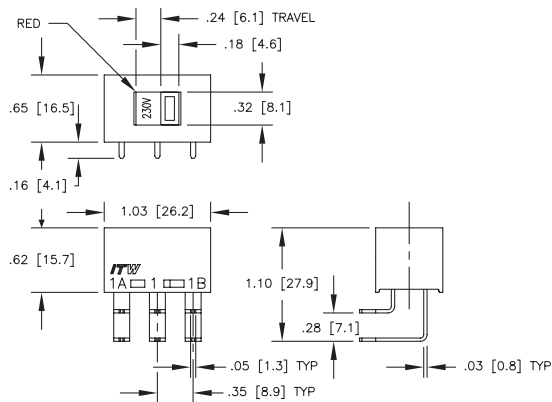
### STANDARDS / AGENCY / RATINGS:



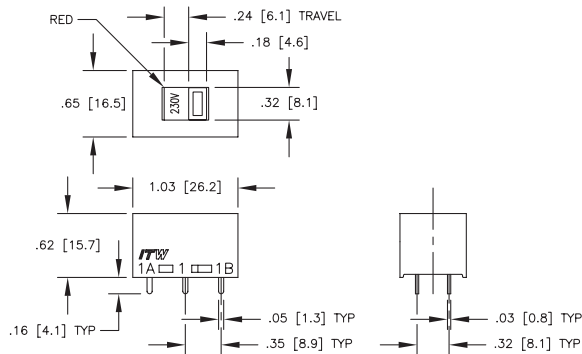
## 18-000-0016



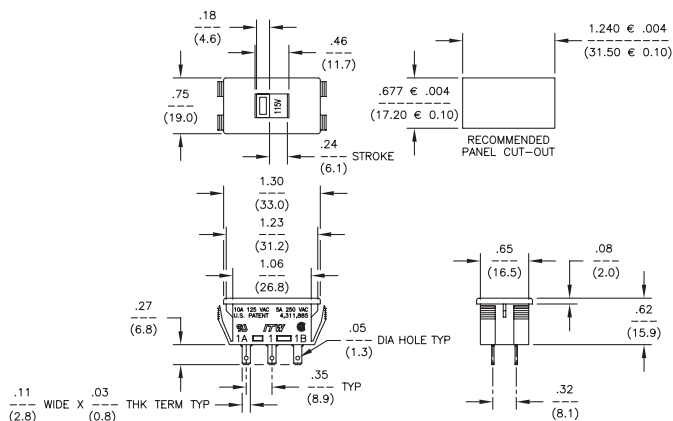
## 18-000-0019



## 18-000-0022



## 18-000-0040



## MECHANICAL / ELECTRICAL CHARACTERISTICS:

**Circuit:**  
DPDT (Form CC)

**Electrical life:**  
10,000 cycles

**Housing/actuator:**  
Nylon 94 V0

**Terminal base:**  
phenolic laminate

**Terminals:**  
silver plated copper

**Electrical ratings:**

Circuitry	Current	Voltage
DPDT*	10 Amp	125 VAC
DPDT*	5 Amp	250 VAC
DPDT**	10 Amp	125 VAC-T85
DPDT**	5 Amp	250 VAC-T85

\* UL and CSA recognized  
\*\* VDC recognized