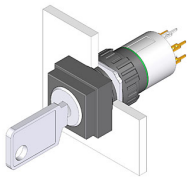


# EAO – Your Expert Partner for Human Machine Interfaces

## 51-442.036D - Keylock switch 2 positions

### 51-442.036D - Keylock switch 2 positions



*Attention: The preview is based on a sample product. This can differ from your current configuration.*

#### Mounting

Mounting cut-out  $\varnothing$  16 mm  
Design raised

#### Front

Front dimension 18 mm x 18 mm  
Front shape square

#### Other Attributes

Weight 0,017 kg

#### Operating-/Indication part

Switching angle 90° right

#### IP-Rating

Front protection IP65

#### Connection Method

Terminal Universal 2.0 x 0.5 mm

#### Actuator

Switching action Rest(a) - Maintain(a)

#### Switching element

Rotary positions 2  
Switching system Low-level element  
Switching voltage 42 V AC/DC  
Switching current 0.1 A  
Contacts 1 NC + 1 NO  
Contact material

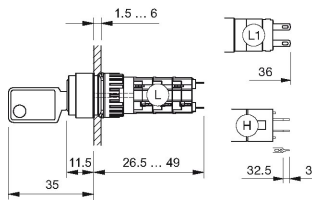
#### Function

Keylock switch

# EAO – Your Expert Partner for Human Machine Interfaces

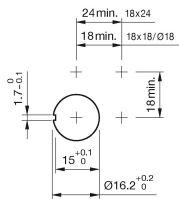
## 51-442.036D - Keylock switch 2 positions

### Dimensions



H = Universal terminal 2.0 x 0.5 mm

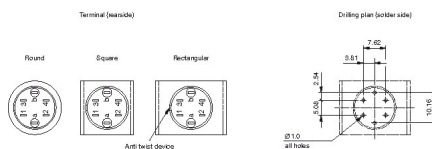
### Mounting cut-outs



### Wiring diagram



### Component layout



### Additional information

Standard lock: DOM 311

Two keys are supplied with each key lock switch

Optional lock numbers on request

### Legend

Contacts: NC = Normally closed, NO = Normally open

Switching action: A = Rest, C = Maintained

# EAO – Your Expert Partner for Human Machine Interfaces

51-442.036D - Keylock switch 2 positions

## Switching positions

