

Straight Blade Devices 20/16A, 250V AC, 2 Pole, 3 Wire Grounding Inlets

HUBBELL

Features

- Compatible with IEC320
- Latching wire locks in connector
- Low profile
- Impact resistant

Ordering Information

Description	Device Color	UPC	Catalog Number
IEC Straight blade panel mount power inlet	Black	783585777047	H320BL

Listings

UL Listed 20A 250V AC-File No. E1706
 CSA certified 20A 250V AC-File No. 17337
 UL classified to IEC 320, 16A 250V AC-File No. E111246
 TUV and VDE Certified

Specifications

Device Type	2 Pole + earth
Configuration	IEC 60320-1 Style appliance coupler, C20
Terminal Retainer	Nylon
Contact Blades	.040" (1.0) Brass
Terminal Screws	Stainless steel
Terminal Clamp	Nickel plated steel
Assembly Screws	Zinc plated steel

Performance

Electrical

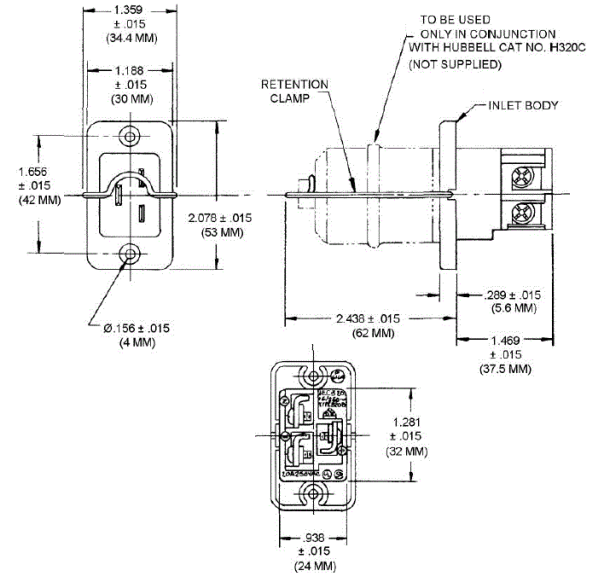
Dielectric Voltage Rating	Withstands 2,000V minimum
	16A 250V AC for European service; 20A 250V AC for North American service

Mechanical

Terminal Accommodation	North American – #16-12 AWG stranded or solid copper conductor only. International – 1.55mm ² -2.5mm ²
Terminal Identification	Terminals identified in accordance with UL 498 and CSA

Environmental

Flammability	UL 94V-2
Operating Temperatures	Maximum continuous 75°C; minimum -40°C (w/o impact)



Resources

Customer Use Drawing
 eCatalog

Dimensions in Inches (mm)

Hubbell Wiring Device-Kellems • Hubbell Incorporated (Delaware) • 40 Waterview Drive • Shelton, CT 06484

Phone (800) 288-6000 • Fax (800) 255-1031 • Specifications subject to change without notice.

