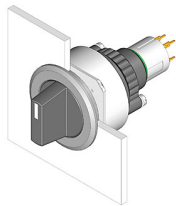


EAO – Your Expert Partner for Human Machine Interfaces

14-521.0360 - Selector switch actuator 2 positions

14-521.0360 - Selector switch actuator 2 positions



Attention: The preview is based on a sample product. This can differ from your current configuration.

Mounting

Design	flush
Mounting cut-out	Ø 30,5 mm

Front

Front dimension	Ø 35 mm
Front shape	round

Other Attributes

Weight	0,025 kg
--------	----------

Operating-/Indication part

Lever colour	black
Lever material	Plastic
Lever shape	short
Switching angle	90° right
Lever illumination	non-illuminative

IP-Rating

Front protection	IP67
------------------	------

Connection Method

Terminal	Universal 2.0 x 0.5 mm
----------	------------------------

Actuator

Switching action	Rest - Maintain
------------------	-----------------

Switching element

Rotary positions	2
Switching system	Low-level element
Contacts	2 NC
Switching voltage	42 V AC/DC
Switching current	0.1 A
Contact material	gold-plated silver

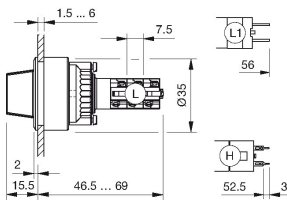
Function

Selector switch

EAO – Your Expert Partner for Human Machine Interfaces

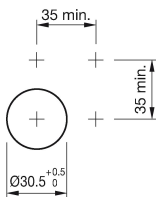
14-521.0360 - Selector switch actuator 2 positions

Dimensions



H = Universal terminal 2.0 x 0.5 mm

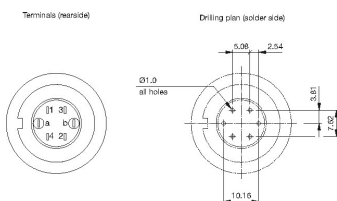
Mounting cut-outs



Wiring diagram



Component layout



Legend

Contacts: NC = Normally closed, NO = Normally open
Switching action: A = Rest, C = Maintained

EAO – Your Expert Partner for Human Machine Interfaces

14-521.0360 - Selector switch actuator 2 positions

Switching positions

