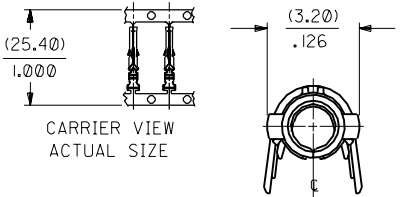
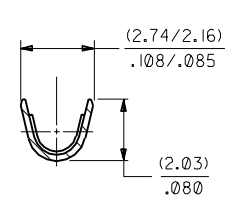


PART NO.	ENG. NO.	
02-06-1201	1787-(P90)I	
02-06-1202	1787-(P90)IL	
02-06-5205	1787-(P59)I	
02-06-5206	1787-(P59)IL	<b>OBSOLETE</b>
02-06-5201	1787-(P550)	
02-06-5202	1787-(P550)L	<b>OBSOLETE</b>

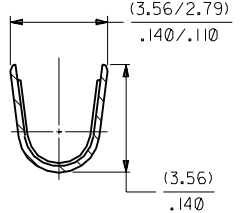


CARRIER VIEW  
ACTUAL SIZE



SECT. "B-B"

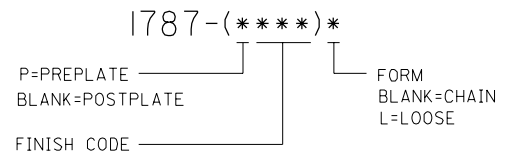
SCALE: 10X



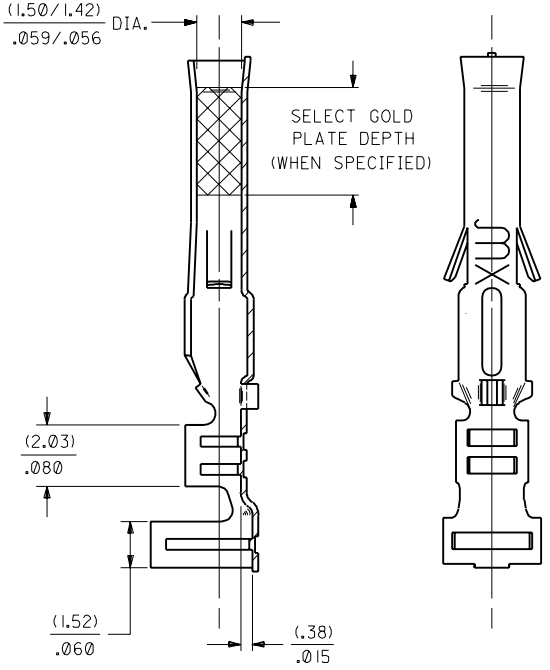
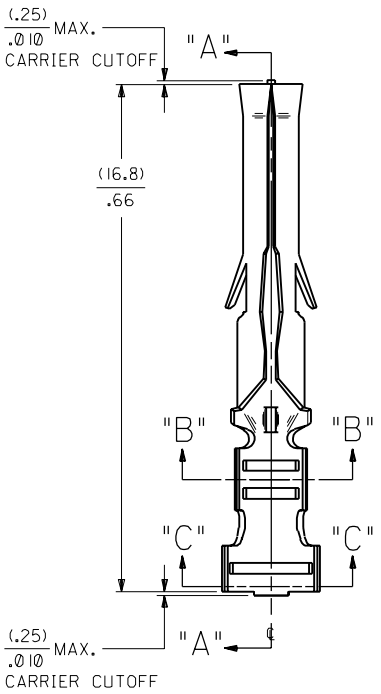
SECT. "C-C"

SCALE: 10X

**LEGEND**



- NOTES:
1. TERMINAL FOR USE WITH (1.57)/.062 DIA. SERIES HOUSINGS AND WILL ACCEPT 18 THRU 24 AWG WIRE WITH (1.52/3.05)/.060/.120 INSULATION DIA.
  2. THIS PART CONFORMS TO PRODUCT SPEC. 02-06.



SECT. "A-A"

- FINISH CODES:
- 901 HOT TIN DIP (.0005)/.000020 MIN.
  - 591 SELECT GOLD PLATE (.00127)/.000050 MIN. IN CONTACT AREA, OVER (.00127)/.000050 MIN. NICKEL OVERALL WITH (.00025)/.000010 MAX. GOLD FLASH OVERALL.
  - 550 SELECT GOLD PLATE (.00038)/.000015 MIN. IN CONTACT AREA, OVER (.00076)/.000030 MIN. NICKEL OVERALL WITH (.00025)/.000010 MAX. GOLD FLASH OVERALL.

MATERIAL NOTE:  
PHOSPHOR BRONZE, ALLOY \*C51000,  
(.20)/.008 THICK, SPING TEMPER.

DIMENSIONS SHOWN (METRIC) INCH UNLESS OTHERWISE SPECIFIED TOLERANCES: ANGULAR ± 1/2°		▽ = 0   ▽ = 0 <b>REVISE ONLY ON CAD SYSTEM</b>	
INCH METRIC		TITLE	
3 PLACE ± .010	---	CRIMP TERMINAL, FEMALE (1.57)/.062 DIA., PHOS. BRONZE FOR 18 THRU 24 GA. WIRE	
2 PLACE ± .014	± 0.25	SHEET NO. DATE	
1 PLACE ---	± 0.35	1 OF 1 9/17/87	
DRAFT WHERE APPLICABLE MUST REMAIN WITHIN DIMENSIONS		MOLEX INCORPORATED U.S.A.	
PART NO. DRWG. NO.		SD-1787-	
DRWG. BY: GEP	CHK'D BY: RW	FILE NAME: SD1787X1	
APP'D BY: RAS	SCALE: 8:1	THIS DRAWING CONTAINS INFORMATION THAT IS PROPRIETARY TO MOLEX INC. AND SHOULD NOT BE USED WITHOUT WRITTEN PERMISSION.	

AN	OBSOLETE P/N UCR2002-0270 COMERCI 01/9/27
AMI	OBSOLETE -IP550I & -IP550IL ECR U6 035B CXC 9/15/95 RW
AM	REV. AND REDRAWN PER ECR 10312 GEP 6-17-87 RW

1787

A