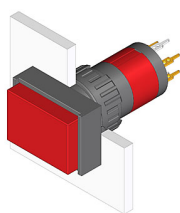


### 31-702.006 - Indicator actuator



*Attention: The preview is based on a sample product. This can differ from your current configuration.*

#### Mounting

Mounting cut-out  
Design Ø 16 mm  
raised

#### Front

Front dimension  
Front shape 18 mm x 24 mm  
rectangular

#### Other Attributes

Weight 0,006 kg  
Diode 1N4007 2

#### IP-Rating

Front protection IP40

#### Connection Method

Terminal Universal 2.0 x 0.5 mm

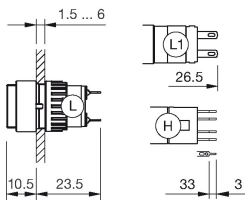
#### Function

Indicator

# EAO – Your Expert Partner for Human Machine Interfaces

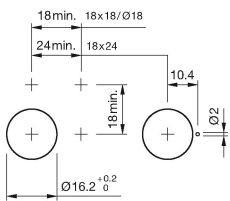
31-702.006 - Indicator actuator

## Dimensions

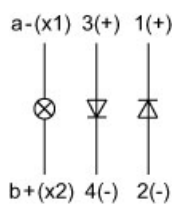


H = Universal terminal 2.0 x 0.5 mm

## Mounting cut-outs



## Wiring diagram



## Component layout

