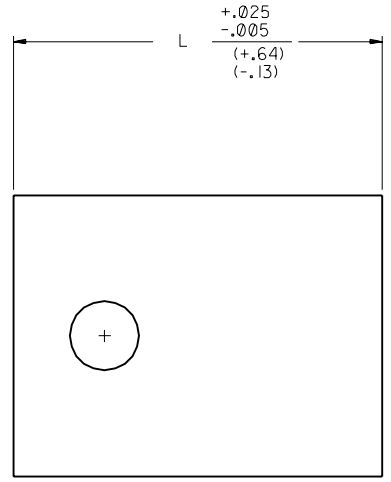
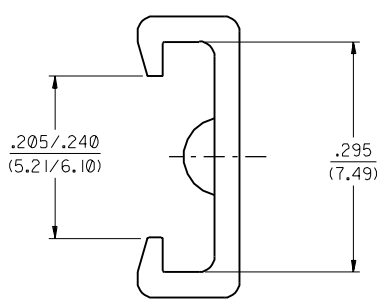


CONNECTOR \varnothing .098/(2.49)		
ENG NO. EDP NO.	CKTS	DIM L
7841-A04B 015-05-8046	04	.419 (10.64)
7841-A05B 015-05-8056	05	.518 (13.16)
7841-A06B 015-05-8066	06	.617 (15.67)
7841-A07B 015-05-8076	07	.715 (18.16)
7841-A08B 015-05-8086	08	.813 (20.65)
7841-A09B 015-05-8096	09	.912 (23.16)
7841-A10B 015-05-8106	10	1.010 (25.65)
7841-A11B 015-05-8116	11	1.108 (28.14)
7841-A12B 015-05-8126	12	1.207 (30.66)
7841-A13B 015-05-8136	13	1.305 (33.15)
7841-A14B 015-05-8146	14	1.404 (35.66)
7841-A15B 015-05-8156	15	1.502 (38.15)
7841-A16B 015-05-8166	16	1.601 (40.67)
7841-A17B 015-05-8176	17	1.699 (43.15)
7841-A18B 015-05-8186	18	1.797 (45.64)
7841-A19B 015-05-8196	19	1.896 (48.16)
7841-A20B 015-05-8206	20	1.994 (50.65)
7841-A21B 015-05-8216	21	2.093 (53.16)
7841-A22B 015-05-8226	22	2.191 (55.65)
7841-A23B 015-05-8236	23	2.289 (58.14)
7841-A24B 015-05-8246	24	2.388 (60.66)
7841-A25B 015-05-8256	25	2.486 (63.14)
7841-A26B 015-05-8266	26	2.585 (65.66)
7841-A27B 015-05-8276	27	2.684 (68.17)
7841-A28B 015-05-8286	28	2.782 (70.66)

CONNECTOR \varnothing .100/(2.54)		
ENG NO. EDP NO.	CKTS	DIM L
7841-A04A 015-05-8045	04	.420 (10.67)
7841-A05A 015-05-8055	05	.520 (13.21)
7841-A06A 015-05-8065	06	.620 (15.75)
7841-A07A 015-05-8075	07	.720 (18.29)
7841-A08A 015-05-8085	08	.820 (20.83)
7841-A09A 015-05-8095	09	.920 (23.37)
7841-A10A 015-05-8105	10	1.020 (25.91)
7841-A11A 015-05-8115	11	1.120 (28.45)
7841-A12A 015-05-8125	12	1.220 (30.99)
7841-A13A 015-05-8135	13	1.320 (33.53)
7841-A14A 015-05-8145	14	1.420 (36.07)
7841-A15A 015-05-8155	15	1.520 (38.61)
7841-A16A 015-05-8165	16	1.620 (41.15)
7841-A17A 015-05-8175	17	1.720 (43.69)
7841-A18A 015-05-8185	18	1.820 (46.23)
7841-A19A 015-05-8195	19	1.920 (48.77)
7841-A20A 015-05-8205	20	2.020 (51.31)
7841-A21A 015-05-8215	21	2.120 (53.85)
7841-A22A 015-05-8225	22	2.220 (56.39)
7841-A23A 015-05-8235	23	2.320 (58.93)
7841-A24A 015-05-8245	24	2.420 (61.47)
7841-A25A 015-05-8255	25	2.520 (64.01)
7841-A26A 015-05-8265	26	2.620 (66.55)
7841-A27A 015-05-8275	27	2.720 (69.09)
7841-A28A 015-05-8285	28	2.820 (71.63)

CONNECTOR \varnothing .100/(2.54)		
ENG NO. EDP NO.	CKTS	DIM L
7841-A03A 015-05-8035	03	.320 (8.18)

NOTES:
I. MATERIAL: POLYESTER COLOR BLACK

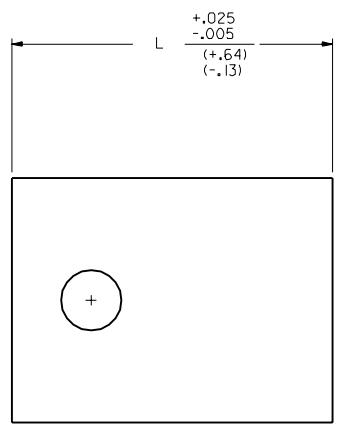
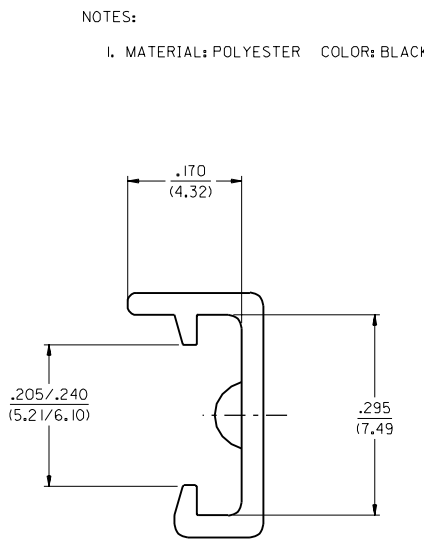


7841

2	Q
1	Q1

DIMENSIONS SHOWN (METRIC) INCH UNLESS OTHERWISE SPECIFIED TOLERANCES: ANGULAR \pm 1/2°		$\nabla = 0$ $\blacktriangledown = 0$ REVISE ONLY ON CAD SYSTEM																	
<table border="1"> <tr><th colspan="2">INCH</th><th colspan="2">METRIC</th></tr> <tr><td>3 PLACE</td><td>\pm .014</td><td colspan="2">---</td></tr> <tr><td>2 PLACE</td><td>\pm ---</td><td colspan="2">\pm .38</td></tr> <tr><td>1 PLACE</td><td>---</td><td colspan="2">\pm ---</td></tr> </table>		INCH		METRIC		3 PLACE	\pm .014	---		2 PLACE	\pm ---	\pm .38		1 PLACE	---	\pm ---		MOLEX INCORPORATED SHEET NO. DATE LISLE, ILL. 60532 U.S.A. 1 OF 2 08/28/95	
INCH		METRIC																	
3 PLACE	\pm .014	---																	
2 PLACE	\pm ---	\pm .38																	
1 PLACE	---	\pm ---																	
DRAFT WHERE APPLICABLE MUST REMAIN WITHIN DIMENSIONS		PART NO. DRWG. NO. SEE CHART SD-7841-****																	
DRAWN BY: KSAMIEC CHK'D BY: REDGLY APP'D BY: BLENZ SCALE: :		THIS DRAWING CONTAINS INFORMATION THAT IS PROPRIETARY TO MOLEX INC. AND SHOULD NOT BE USED WITHOUT WRITTEN PERMISSION.																	
LTR.	REVISIONS	LTR.	REVISIONS																

	13	12	11	10	9	8	7	6	5	4	3	2	1									
	CONNECTOR € .098/(2.49)			CONNECTOR € .100/(2.54)			NOTES: I. MATERIAL: POLYESTER COLOR: BLACK															
J	ENG NO. EDP NO.	CKTS	DIM L	ENG NO. EDP NO.	CKTS	DIM L									J							
	7841-B04B 015-05-8048	04	.419 (10.64)	7841-B04A 015-05-8047	04	.420 (10.67)																
I	7841-B05B 015-05-8058	05	.518 (13.16)	7841-B05A 015-05-8057	05	.520 (13.21)																
	7841-B06B 015-05-8068	06	.617 (15.67)	7841-B06A 015-05-8067	06	.620 (15.75)																
H	7841-B07B 015-05-8078	07	.715 (18.16)	7841-B07A 015-05-8077	07	.720 (18.29)																
	7841-B08B 015-05-8088	08	.813 (20.65)	7841-B08A 015-05-8087	08	.820 (20.83)																
	7841-B09B 015-05-8098	09	.912 (23.16)	7841-B09A 015-05-8097	09	.920 (23.37)																
G	7841-B10B 015-05-8108	10	1.010 (25.65)	7841-B10A 015-05-8107	10	1.020 (25.91)																
	7841-B11B 015-05-8118	11	1.108 (28.14)	7841-B11A 015-05-8117	11	1.120 (28.45)																
	7841-B12B 015-05-8128	12	1.207 (30.66)	7841-B12A 015-05-8127	12	1.220 (30.99)																
F	7841-B13B 015-05-8138	13	1.305 (33.15)	7841-B13A 015-05-8137	13	1.320 (33.53)																
	7841-B14B 015-05-8148	14	1.404 (35.66)	7841-B14A 015-05-8147	14	1.420 (36.07)																
E	7841-B15B 015-05-8158	15	1.502 (38.15)	7841-B15A 015-05-8157	15	1.520 (38.61)																
	7841-B16B 015-05-8168	16	1.601 (40.67)	7841-B16A 015-05-8167	16	1.620 (41.15)																
	7841-B17B 015-05-8178	17	1.699 (43.15)	7841-B17A 015-05-8177	17	1.720 (43.69)																
D	7841-B18B 015-05-8188	18	1.797 (45.64)	7841-B18A 015-05-8187	18	1.820 (46.23)																
	7841-B19B 015-05-8198	19	1.896 (48.16)	7841-B19A 015-05-8197	19	1.920 (48.77)																
	7841-B20B 015-05-8208	20	1.994 (50.65)	7841-B20A 015-05-8207	20	2.020 (51.31)																
C	7841-B21B 015-05-8218	21	2.093 (53.16)	7841-B21A 015-05-8217	21	2.120 (53.85)																
	7841-B22B 015-05-8228	22	2.191 (55.65)	7841-B22A 015-05-8227	22	2.220 (56.39)																
	7841-B23B 015-05-8238	23	2.289 (58.14)	7841-B23A 015-05-8237	23	2.320 (58.93)																
B	7841-B24B 015-05-8248	24	2.388 (60.66)	7841-B24A 015-05-8247	24	2.420 (61.47)																
	7841-B25B 015-05-8258	25	2.486 (63.14)	7841-B25A 015-05-8257	25	2.520 (64.01)																
	7841-B26B 015-05-8268	26	2.585 (65.66)	7841-B26A 015-05-8267	26	2.620 (66.55)																
A	7841-B27B 015-05-8278	27	2.684 (68.17)	7841-B27A 015-05-8277	27	2.720 (69.09)																
	7841-B28B 015-05-8288	28	2.782 (70.66)	7841-B28A 015-05-8287	28	2.820 (71.63)																
	13	12	11	10	9	8									7	6	5	4	3	2	1	



DIMENSIONS SHOWN (METRIC) INCH		▽ = 0 ▼ = 0		REVISE ONLY ON CAD SYSTEM	
UNLESS OTHERWISE SPECIFIED TOLERANCES: ANGULAR ± 1/2°					
INCH		METRIC			
3 PLACE	± .014	---			
2 PLACE	±	0.13			
1 PLACE	---	±			
DRAFT WHERE APPLICABLE MUST REMAIN WITHIN DIMENSIONS					
DRG. BY: KSAMIEC	CHK'D. BY: REDDLEY				
APP'D. BY: BLENZ	SCALE: 1:1				
LTR. REVISIONS	LTR. REVISIONS	Q SEE SHEET 1			
MFG. SH. REV.		TITLE: IDT COVER		SHEET NO. 2 DATE 08/28/95	
MOLEX INCORPORATED		LITTLEFILL, U.S.A.		60532	
SEE CHART		SD-7841-****		DIV. C	
THIS DRAWING CONTAINS INFORMATION THAT IS PROPRIETARY TO MOLEX INC. AND SHOULD NOT BE USED WITHOUT WRITTEN PERMISSION.					