

PLEASE CHECK WWW.MOLEX.COM FOR LATEST PART INFORMATION

Part Number: [0685030101](#)
Status: **Active**
Description: OBD-II Wire Dress Cover

Documents:

[3D Model](#) [Packaging Specification PK-68503-002 \(PDF\)](#)
[Drawing \(PDF\)](#) [RoHS Certificate of Compliance \(PDF\)](#)

General

| | |
|----------------|-----------------------|
| Product Family | Accessories |
| Series | 68503 |
| Component Type | Cover |
| Product Name | OBD-II |
| UPC | 756054239216 |

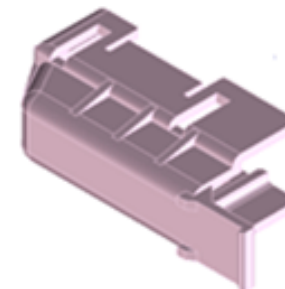
Physical

| | |
|--------------------|---------|
| Circuits (Loaded) | 0 |
| Circuits (maximum) | 0 |
| Net Weight | 4.665/g |

Material Info

Reference - Drawing Numbers

| | |
|-------------------------|--------------|
| Packaging Specification | PK-68503-002 |
| Sales Drawing | SD-68503-005 |



Series image - Reference only

EU ELV

Compliant

EU RoHS

Compliant

REACH SVHC

Not Contained Per -
ED/30/2017 (7 July
2017)

Halogen-Free

Status

Not Relevant

**Need more information on product
environmental compliance?**

Email productcompliance@molex.com
Please visit the [Contact Us](#) section for any
non-product compliance questions.

| | |
|-----------------|---------------|
| China ROHS | Not Relevant |
| ELV | Compliant |
| RoHS Phthalates | Not Contained |

Search Parts in this Series
[68503 Series](#)