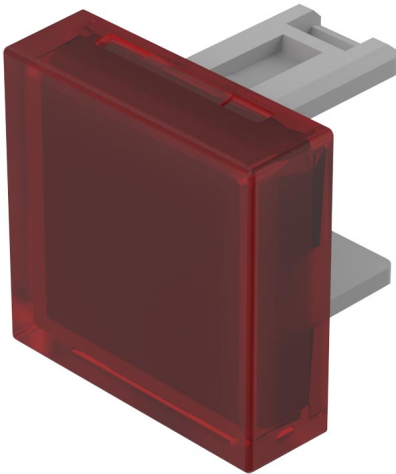


31-953.2 - Lens plastic



Attention: The preview is based on a sample product. This can differ from your current configuration.

Other Attributes

Weight	0,001 kg
Dimension	15.3 x 15.3 mm

Operating-/Indication part

Lens optics	transparent
Lens colour	red
Lens material	Plastic
Lens profile	flat
Lens illumination	illuminative