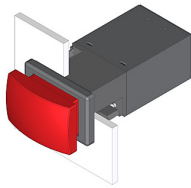


EAO – Your Expert Partner for Human Machine Interfaces

22-215.011 - Mushroom-head pushbutton actuator

22-215.011 - Mushroom-head pushbutton actuator



Attention: The preview is based on a sample product. This can differ from your current configuration.

Mounting

Mounting cut-out Design 22 mm x 30 mm
flush

Front

Front dimension 24 mm x 36 mm
Front bezel colour black
Front bezel material Plastic
Front shape rectangular

Other Attributes

Weight 0,044 kg

Operating-/Indication part

Lens illumination

IP-Rating

Front protection IP65

Connection Method

Terminal Screw terminal

Actuator

Switching action Momentary
Housing colour black
Housing material Plastic

Switching element

Switching system Snap-action switching element
Contacts 1 NC + 1 NO
Switching voltage 400 V AC
Switching current 10 A
Contact material Silver

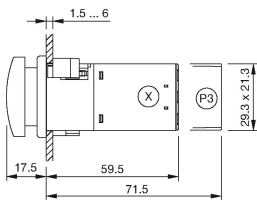
Function

Mushroom-head pushbutton

EAO – Your Expert Partner for Human Machine Interfaces

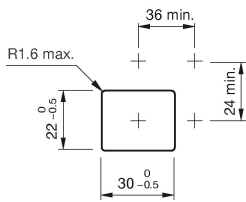
22-215.011 - Mushroom-head pushbutton actuator

Dimensions

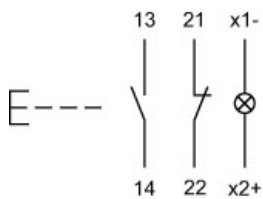


X = Screw terminal

Mounting cut-outs



Wiring diagram



Legend

Contacts: NC = Normally closed, NO = Normally open
Switching action: B = Momentary