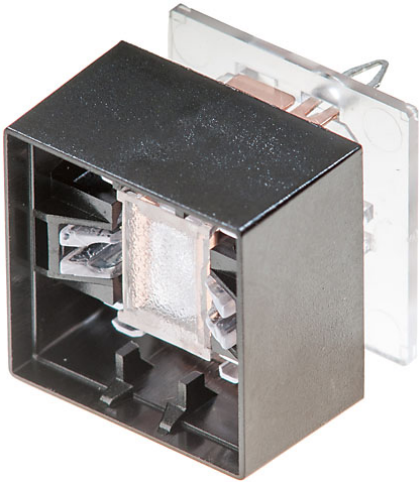


EAO – Your Expert Partner for Human Machine Interfaces

95-414.000 - Switching element

95-414.000 - Switching element



Attention: The preview is based on a sample product. This can differ from your current configuration.

Front

Front shape square
Front dimension 19 mm x 19 mm

Other Attributes

Weight 0,003 kg

Operating-/Indication part

Lens illumination illuminative

IP-Rating

Front protection IP40

Connection Method

Terminal PCB

Actuator

Switching action Momentary

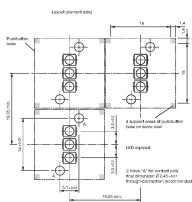
Switching element

Switching system Slow-make switching element
Contacts 1 NO
Switching voltage 48 V DC
Switching current 0.05 A
Contact material

EAO – Your Expert Partner for Human Machine Interfaces

95-414.000 - Switching element

Component layout



Additional information

for combining with lens and diffuser

Suitable for PCB thickness 1.5 to 2.5 mm

Special spring clip contacts position and hold the pushbutton in place during the soldering process. The soldering provides the contacting and the mechanical strength. The pushbutton is designed for panel mounting only

Legend

Contacts: NO = Normally open

Switching action: B = Momentary