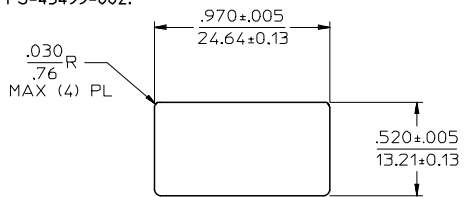
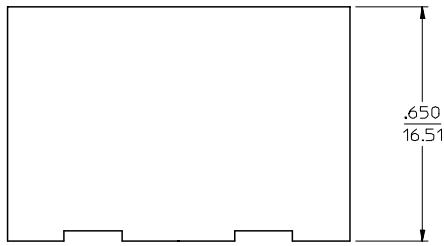


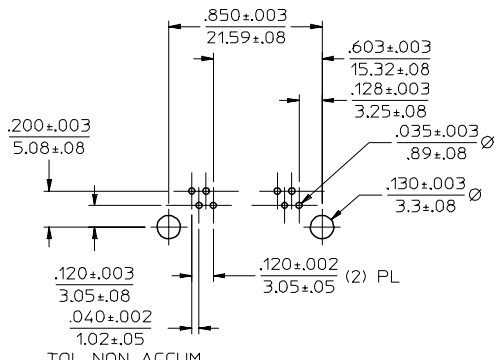
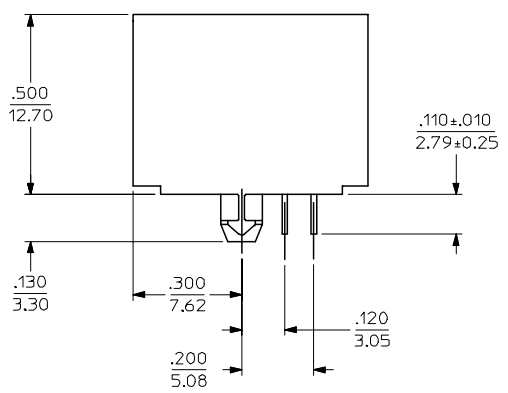
13 12 11 10 9 8 7 6 5 4 3 2 1

J
I
H
G
F
E
D
C
B
A

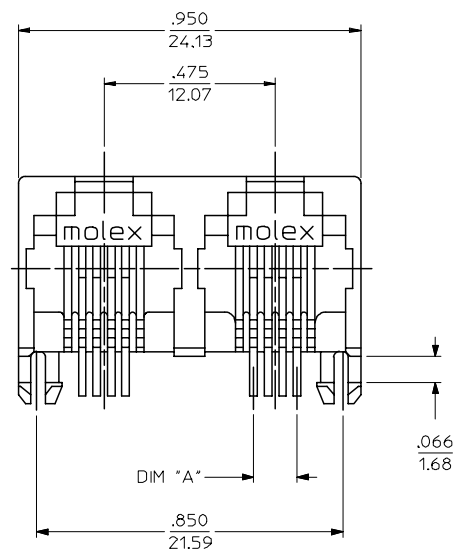
- NOTES:
 1) MATERIAL:
 HOUSING: NYLON(PA), GLASS FILLED, UL94V-0, COLOR: BLACK
 TERMINALS: PHOSPHOR BRONZE, .015/(0.38) THICK
 2) FINISH:
 TERMINALS:
 SELECT GOLD IN CONTACT AREA: 50 MICROINCHES MIN.,
 SELECT TIN IN PC TAIL AREA: 100 MICROINCHES MIN.,
 WITH OVERALL NICKEL UNDERPLATE: 50 MICROINCHES MIN.
 3) PRODUCT SPECIFICATION AND PROCESSING PARAMETERS: PS-43860-003.
 4) PACKAGING SPECIFICATION:
 CONNECTOR ASSEMBLIES PACKAGED IN EXTRUDED TUBES PER MOLEX
 PACKAGING SPECIFICATION PK-43685-005.
 5) ALL UNTOLERANCED DIMENSIONS ARE SHOWN FOR REFERENCE ONLY.
 6) THE PRIMARY SHIPPING CARTON WILL BE LABELED "COMPLIANT TO RoHS
 DIRECTIVE 2002/95/EC AND ELV ANNEX II OF DIRECTIVE 2000/53/EC".
 ASSEMBLIES WILL BE COMPLIANT TO THE RoHS AND ELV (LEAD-FREE)
 DIRECTIVES.
 7) RECOMMENDED PCB THICKNESS: .062±.005/1.57±0.13
 8) THIS PART CONFORMS TO CLASS B REQUIREMENTS OF COSMETIC
 SPECIFICATION PS-45499-002.



PANEL CUTOUT
SCALE: 2X



P.C. BOARD LAYOUT
6 LOADED 4 ASSEMBLY
COMPONENT SIDE OF BOARD
SCALE: 2X



6 LOADED 4
ASSEMBLY SHOWN

2	A1
1	A1
SHT	REV

MATERIAL NUMBER	CIRCUITS PER PORT	DIM "A"
438141421	4	.120/3.05

ADD PCB THICKNESS FC NO: UCP2008-0143 DRAWN:JBELL 2007/07/24 CHKD:LSCHMIDT 2007/07/30 APPR:FSM TH 2007/08/01 REV: A1	DESCRIPTION
---	-------------

QUALITY SYMBOLS	$\nabla=0$ $\nabla=0$															
GENERAL TOLERANCES (UNLESS SPECIFIED)	<table border="1"> <tr> <th></th> <th>mm</th> <th>INCH</th> </tr> <tr> <td>4 PLACES</td> <td>± ---</td> <td>± ---</td> </tr> <tr> <td>3 PLACES</td> <td>± ---</td> <td>± ---</td> </tr> <tr> <td>2 PLACES</td> <td>± ---</td> <td>± ---</td> </tr> <tr> <td>1 PLACE</td> <td>± ---</td> <td>± ---</td> </tr> </table>		mm	INCH	4 PLACES	± ---	± ---	3 PLACES	± ---	± ---	2 PLACES	± ---	± ---	1 PLACE	± ---	± ---
	mm	INCH														
4 PLACES	± ---	± ---														
3 PLACES	± ---	± ---														
2 PLACES	± ---	± ---														
1 PLACE	± ---	± ---														
DRAFT WHERE APPLICABLE MUST REMAIN WITHIN DIMENSIONS																

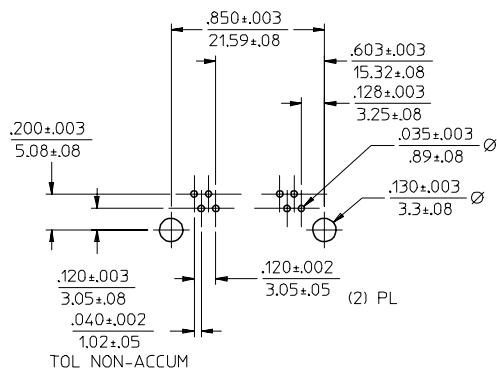
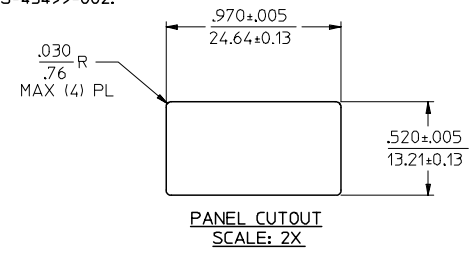
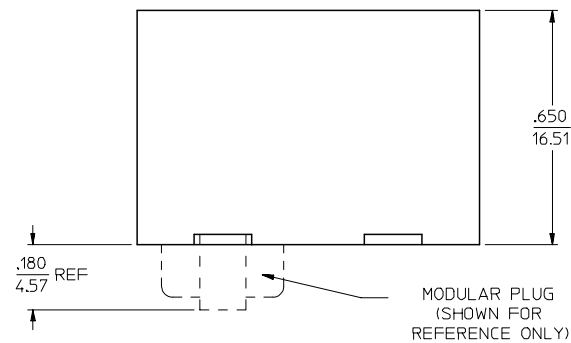
DIMENSION STYLE		IN/MM
DRAWN BY	DATE	TITLE
LSCHMIDT	2004/12/10	INVERTED DUAL PORT RIGHT ANGLE MODULAR JACK ASSEMBLY (LEAD-FREE)
CHECKED BY	DATE	
LSCHMIDT	2004/12/10	MATERIAL NO. 438141421
APPROVED BY	DATE	
FSMITH	2004/12/13	DOCUMENT NO. SD-43814-003

SCALE	DESIGN UNITS	THIRD ANGLE PROJECTION
4:1	INCH	
MOLEX INCORPORATED		

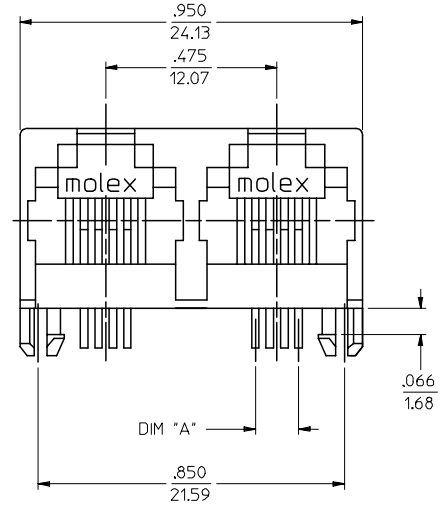
SHEET NO.	1 OF 2
-----------	--------

12 11 10 9 8 7 6 5 4 3 2 1

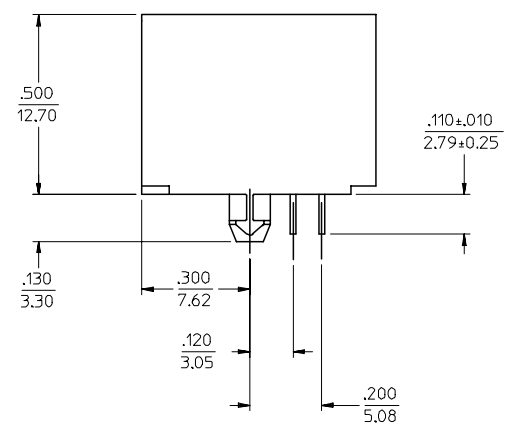
- NOTES:
 1) MATERIAL:
 HOUSING: NYLON(PA), GLASS FILLED, UL94V-0, COLOR: BLACK
 TERMINALS: PHOSPHOR BRONZE, .015/(0.38) THICK
 2) FINISH:
 TERMINALS:
 SELECT GOLD IN CONTACT AREA: 50 MICROINCHES MIN.,
 SELECT TIN IN PC TAIL AREA: 100 MICROINCHES MIN.,
 WITH OVERALL NICKEL UNDERPLATE: 50 MICROINCHES MIN.
 3) PRODUCT SPECIFICATION AND PROCESSING PARAMETERS: PS-43860-003.
 4) PACKAGING SPECIFICATION:
 CONNECTOR ASSEMBLIES PACKAGED IN EXTRUDED TUBES PER MOLEX
 PACKAGING SPECIFICATION PK-43685-005.
 5) ALL UNTOLERANCED DIMENSIONS ARE SHOWN FOR REFERENCE ONLY.
 6) THE PRIMARY SHIPPING CARTON WILL BE LABELED "COMPLIANT TO RoHS
 DIRECTIVE 2002/95/EC AND ELV ANNEX II OF DIRECTIVE 2000/53/EC".
 ASSEMBLIES WILL BE COMPLIANT TO THE RoHS AND ELV (LEAD-FREE)
 DIRECTIVES.
 7) RECOMMENDED PCB THICKNESS: .062±.005/1.57±0.13
 8) THIS PART CONFORMS TO CLASS B REQUIREMENTS OF COSMETIC
 SPECIFICATION PS-45499-002.



P.C. BOARD LAYOUT
 6 LOADED 4 ASSEMBLY
 COMPONENT SIDE OF BOARD
 SCALE: 2X



6 LOADED 4
 ASSEMBLY SHOWN



WITH SHIELDING INSULATOR

MATERIAL NUMBER	CIRCUITS PER PORT	DIM "A"
438141422	4	.120/3.05

ADD PCB THICKNESS FCC NO: UCP2008-0143 DRAWN: JBELL CHKD: LSCHMIDT APPR: FSMITH	2007/07/24 2007/07/30 2007/08/01	DESCRIPTION
A1		

GENERAL TOLERANCES (UNLESS SPECIFIED)	
mm	INCH
4 PLACES ±---	±---
3 PLACES ±---	±---
2 PLACES ±---	±---
1 PLACE ±---	±---
ANGULAR ±1/2°	

DIMENSION STYLE	
IN/MM	
DRAWN BY	DATE
LSCHMIDT	2005/01/24
CHECKED BY	DATE
LSCHMIDT	2005/01/24
APPROVED BY	DATE
FSMITH	2005/01/25
MATERIAL NO.	DOCUMENT NO.
438141422	SD-43814-003

SCALE	DESIGN UNITS	THIRD ANGLE PROJECTION
4:1	INCH	
INVERTED DUAL PORT RIGHT ANGLE MODULAR JACK ASSEMBLY (LEAD-FREE)		
MOLEX INCORPORATED		
SHEET NO.		2 OF 2