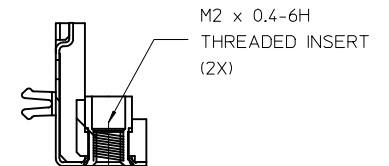
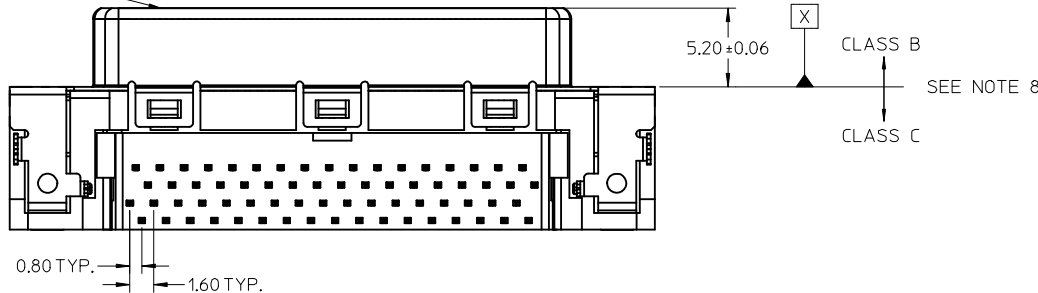


SECTION A-A



SECTION B-B

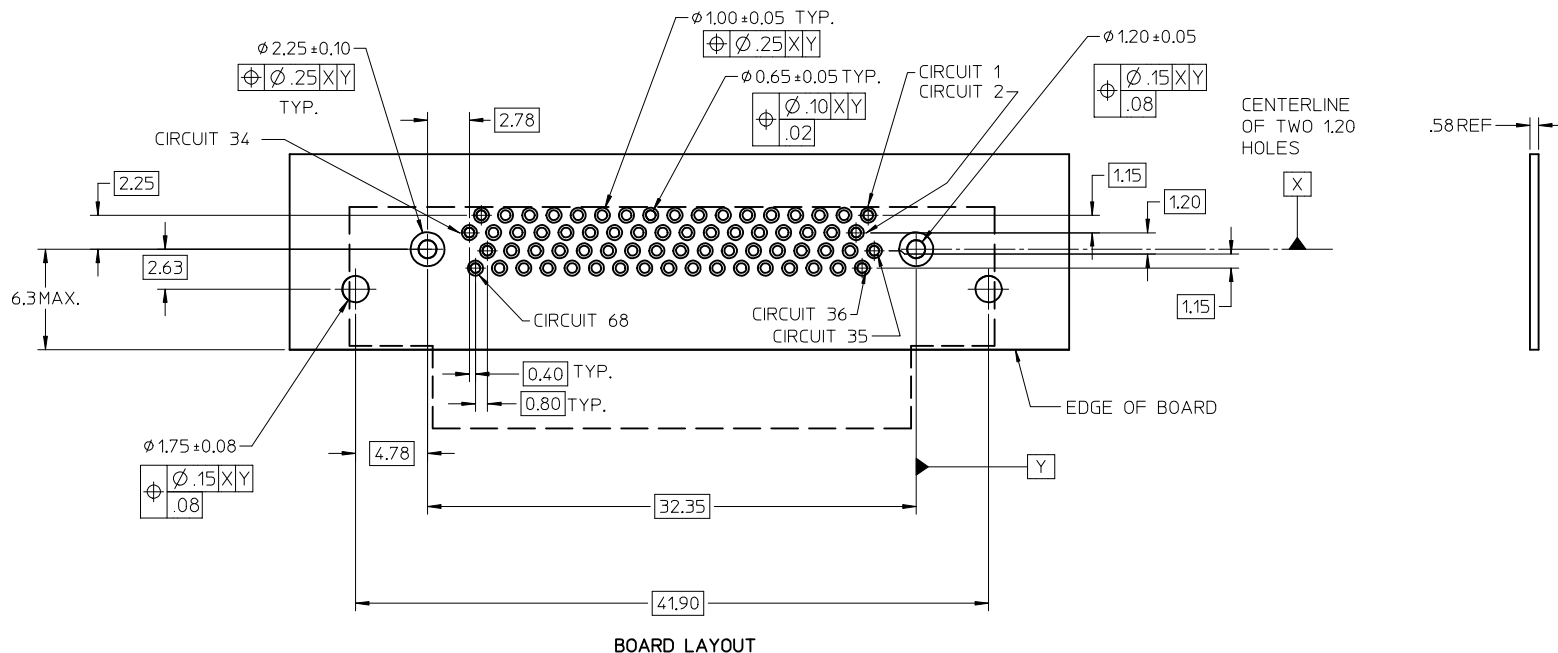


NOTES:

- MATERIALS:  
HOUSING: HIGH TEMPERATURE THERMOPLASTIC, COLOR: BLACK, UL 94V-0  
TERMINALS: PHOSPHOR BRONZE  
SHIELD: STEEL  
TAIL ALIGNER: HIGH TEMPERATURE THERMOPLASTIC, COLOR: BLACK, UL 94V-0
- FINISH:  
TERMINALS: 0.05-0.25 MICROMETERS GOLD FLASH IN CRITICAL AREA  
OVER 0.75 MICROMETERS MINIMUM PALLADIUM NICKEL IN CRITICAL AREA,  
1.87 MICROMETERS TIN IN TAIL AREA ALL OVER 1.25 MICROMETERS MINIMUM NICKEL.  
SHIELD: 3.8 MICROMETERS BRIGHT TIN OVER 1.3 MICROMETERS MINIMUM NICKEL  
OVER COPPER FLASH (OPTIONAL).
- APPLICABLE PRODUCT SPEC: PSX-71425-9999
- PACKAGING: TUBE PACK PER PK-71430-0101
- RECOMMENDED BOARD THICKNESS: .58 ± 0.06
- APPLICABLE STANDARDS: EIA-3652 AND SFF-8441
- DATE CODE: YR/WK PER EIA-476-A

- PRODUCT COMPLIES WITH COSMETIC SPECIFICATION PS-45499-002.  
SEE FIGURE ABOVE FOR SURFACE CLASSIFICATIONS.
- TORQUE TO INSTALL SCREWLOCKS INTO THREADED INSERTS:  
0.34 Nm MAXIMUM

RESTORE MATL NMBR EC NO: UCP2012-3896	DESCRIPTION 2012/08/30	QUALITY SYMBOLS	GENERAL TOLERANCES (UNLESS SPECIFIED)		DIMENSION STYLE		SCALE	DESIGN UNITS	THIRD ANGLE PROJECTION		
			mm	INCH	IN/MM	DATE	METRIC				
DRWIN:BARBER CHKD:MMOLFE APPR:SMILLER	2012/08/31	DESCRIPTION	4 PLACES	± ---	± ---	DRAWN BY	DATE	TITLE <b>0.8 MM PITCH VHDCI RIGHT ANGLE RECEPTACLE SALES DRAWING</b>			
			3 PLACES	± ---	± ---	KSWEENEY	99/10/20				
REV	REV	DESCRIPTION	2 PLACES	± 0.25	± ---	CHECKED BY	DATE	DOCUMENT NO. <b>SD-71430-012</b>			
			1 PLACE	± ---	± ---	KSWEENEY	99/10/20				
			0 PLACE	±	±	APPROVED BY	DATE	SHEET NO. <b>1 OF 2</b>			
			ANGULAR ±1/2°		MATERIAL NO.	DATE	THIS DRAWING CONTAINS INFORMATION THAT IS PROPRIETARY TO MOLEX. INCORPORATED AND SHOULD NOT BE USED WITHOUT WRITTEN PERMISSION				
K			DRAFT WHERE APPLICABLE MUST REMAIN WITHIN DIMENSIONS		SIZE	<b>71430-0003</b>					



NOTES:

1. FOR FULL MATE WITH PLUG, PANEL THICKNESS SHOULD NOT EXCEED 1.0mm.

FUNCTIONAL MATING WITH MOLEX PLUG CAN STILL BE MAINTAINED WITH PANELS AS THICK AS 2.5mm (BUT PLUG AND RECEPTACLE WILL NOT BE FULLY MATED).

2. GUIDELINES FOR CHOOSING A MOLEX SCREWLOCK:

PANEL THICKNESS	RECOMMENDED SCREWLOCK
LESS THAN OR EQUAL TO 1.00 MM	71433-0002
1.01 TO 2.15 MM	71433-0010

SEE SHEET 1 EC NO: UCP2012-3896 DRAWN BY: DRWINBARKER 2012/08/30 CHKD: MWOLFE APPR: SMILLER 2012/08/31	DESCRIPTION QUALITY SYMBOLS ▽=0 ▽=0 ▽=0	GENERAL TOLERANCES (UNLESS SPECIFIED)		DIMENSION STYLE <b>IN/MM</b>	SCALE <b>4:1</b>	DESIGN UNITS <b>METRIC</b>	THIRD ANGLE PROJECTION	
		4 PLACES ± --- ± ---	DRAWN BY KSWEENEY	DATE 99/10/20	TITLE <b>0.8 MM PITCH VHDCI          RIGHT ANGLE RECEPTACLE          SALES DRAWING</b>			
		3 PLACES ± --- ± ---	CHECKED BY KSWEENEY	DATE 99/10/20	<b>molex</b>			
		2 PLACES ± 0.25 ± ---	APPROVED BY MBANAKIS	DATE 99/10/20	MATERIAL NO. <b>SEE SHEET 1</b>	DOCUMENT NO. <b>SD-71430-012</b>	SHEET NO. <b>2 OF 2</b>	
ANGULAR ±1/2°		DRAFT WHERE APPLICABLE MUST REMAIN WITHIN DIMENSIONS		THIS DRAWING CONTAINS INFORMATION THAT IS PROPRIETARY TO MOLEX INCORPORATED AND SHOULD NOT BE USED WITHOUT WRITTEN PERMISSION				