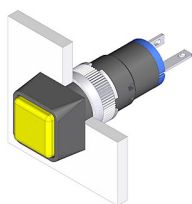


EAO – Your Expert Partner for Human Machine Interfaces

18-052.0052L - Indicator actuator

18-052.0052L - Indicator actuator



Attention: The preview is based on a sample product. This can differ from your current configuration.

Mounting

Mounting cut-out	Ø 8 mm
Design	raised

Front

Front dimension	9 x 9 mm
Front shape	square

Other Attributes

Weight	0.002 kg
Operation current	10 mA
Operating voltage	24 V DC $\pm 10\%$

Operating-/Indication part

Lens material	Plastic
Lens colour	red
Lens profile	flat
Lens optics	translucent
Lens illumination	illuminative

IP-Rating

Front protection	IP40
------------------	------

Connection Method

Terminal	Solder
----------	--------

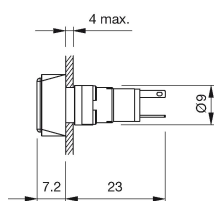
Function

Indicator

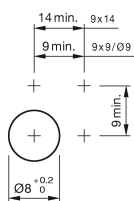
EAO – Your Expert Partner for Human Machine Interfaces

18-052.0052L - Indicator actuator

Dimensions



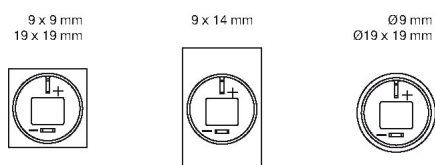
Mounting cut-outs



Wiring diagram



Component layout



Additional information

Luminosity and wave length variations caused by LED manufacturing processes may cause slight differences regarding the illumination