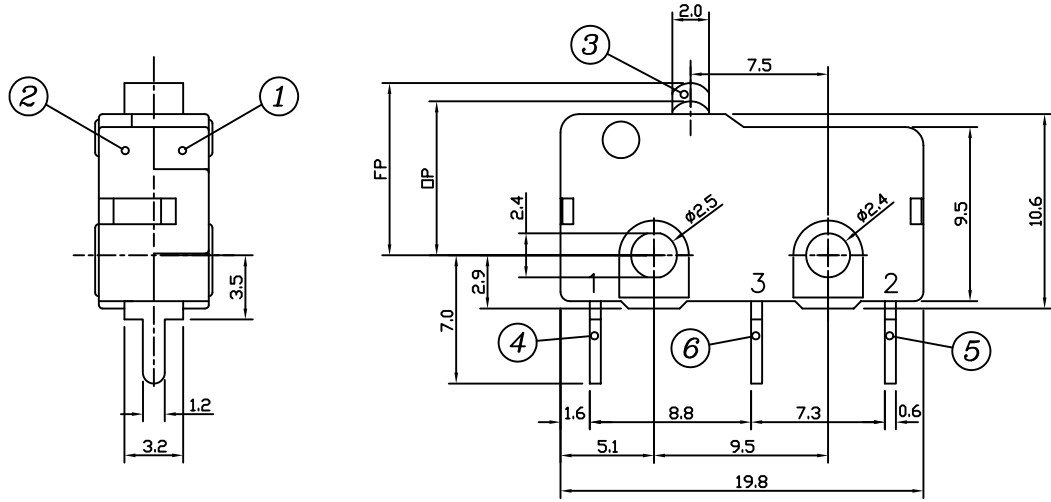
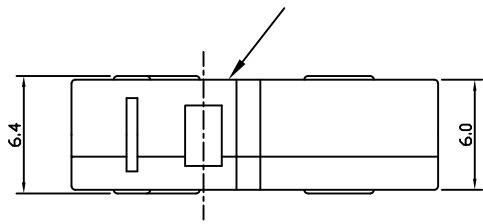


THIS INFORMATION IS CONFIDENTIAL AND PROPRIETARY TO TYCO ELECTRONICS AUSTRIA GMBH AND ITS AFFILIATES. IT MAY NOT BE DISCLOSED TO ANYONE, INCLUDING SUBSIDIARIES AND AFFILIATES, WITHOUT WRITTEN AUTHORIZATION FROM TYCO ELECTRONICS AUSTRIA.



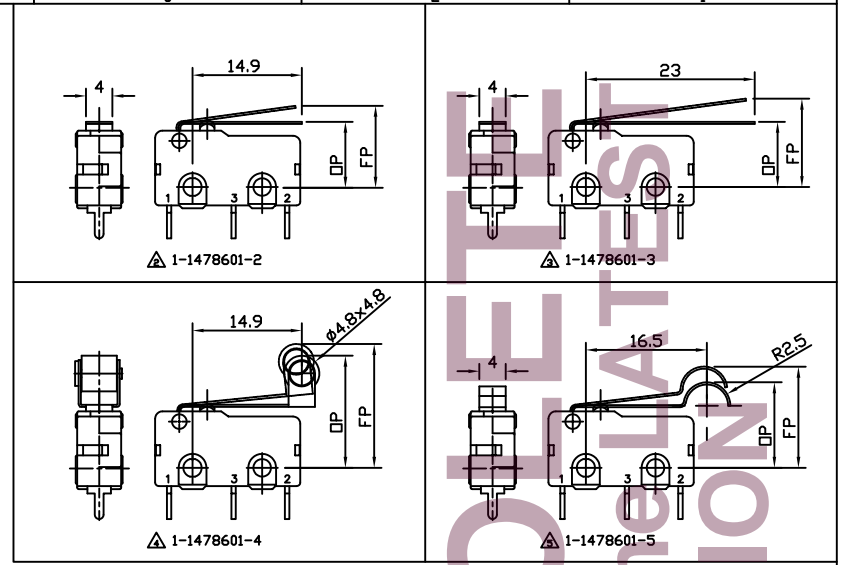
△ 1-1478601-1

TE LOGO AND PART NUMBER MARKED IN THIS AREA

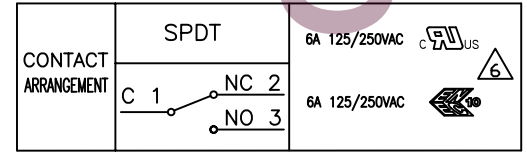


- NOTES:
- FOR TECHNICAL DATA REFER TO YOUR LOCAL TYCO ELECTRONICS SALES OFFICE.
  - ALL DIMENSIONS ARE NOMINAL. FOR REFERENCE ONLY UNLESS OTHERWISE STATED.
  - ALL DIMENSIONS ARE COMMON TO THE MAIN BODY. VARIATIONS ARE IN THE OPERATING LEVERS.
  - OP: OPERATING POSITION  
FP: FREE POSITION

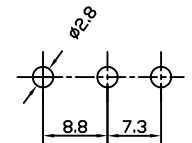
△ VDE/ENEC APPROVAL IN PROGRESS



SPECIFICATIONS	
Rating	6A 125/250V AC
Contact Resistance	50 mΩ max.
Insulation Resistance	100 MΩ min. DC500V
Dielectric Strength	1000V AC 1 minute
Mechanical Life	1,000,000 cycles
Electrical Life	50,000 cycles @6A 250V, resistive load
Operating Temperature Range	-40°C to +125°C RH 85% max.
Soldering Temperature	260 ± 5°C 3sec



Hole Pattern for PCB



TE SALES PART No.	TE PART NO	DESCRIPTION	CHARACTERISTICS						△
			Operating Force	Releasing Force min	Pre Travel max	Operating Position	Over Travel min	Movement Differential max	
SP6DTBOLE	1-1478601-1	Microswitch, Pin Plunger	160 ±30 g	35 g	0,6 mm	8,4 ±0,3 mm	0,5 mm	0,2 mm	△
SP6DTBNLE	1-1478601-2	Microswitch, Norm Lever	45 ±15 g	8 g	3,0 mm	9,4 ±1,0 mm	1,0 mm	1,0 mm	△
SP6DTBLLE	1-1478601-3	Microswitch, Long Lever	25 ±10 g	5 g	3,7 mm	10,0 ±1,5 mm	1,5 mm	1,5 mm	△
SP6DTBNRE	1-1478601-4	Microswitch, Norm Roller	40 ±15 g	8 g	2,5 mm	15,0 ±0,8 mm	1,0 mm	1,0 mm	△
SP6DTBSME	1-1478601-5	Microswitch, Simu Roller	45 ±15 g	10 g	2,6 mm	10,8 ±0,8 mm	1,0 mm	1,0 mm	△

7	CONTACT	Ag ALLOY	
6	TERMINAL	BRASS SILVER PLATED	
5	TERMINAL	BRASS SILVER PLATED	
4	TERMINAL	BRASS SILVER PLATED	
3	BUTTON	PBT RESIN	BLACK
2	COVER	PBT RESIN	GREY
1	BASE	PBT RESIN	GREY
PART NO:	PART NAME:	MATERIAL/SURFACE:	OPTIONAL DESCRIPTION

PART LIST

test dimen / Prüfmaß	auxiliary dimen / Hilfsmaß ( )	theor. dimen / theor. Maß	production control dimen / Fertigungskontrollmaß ( )	dimen for measure. technology / messtechn. ref. Maß [ ]

DEPARTMENT	D/E / R/SF
DRAWER	27-03-08SA008712

T 21-04-09 VEIH TOLERANCES SPECIFIED APPROVED DATE NAME

SCALE: NAME: MICRO SWITCH 6A 160g RANGE PCB TERMINAL

REPLACEMENT FOR: DWG LDC NO: IF SHEET 1 OF 1 REVISION T A 2

THIS DRAWING IS A CONTROLLED DOCUMENT, HANDWRITTEN CHANGES ARE NOT ALLOWED

TOLERANCES UNLESS OTHERWISE SPECIFIED  
 x +/-0,5mm  
 .xx +/-0,2mm  
 .xxx +/-0,1mm

