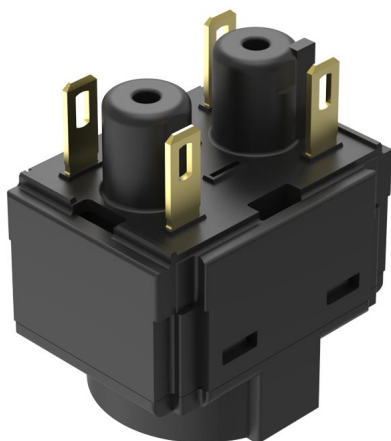


EAO – Your Expert Partner for Human Machine Interfaces

61-8775.37 - Switching element for stop switch, foolproof

61-8775.37 - Switching element for stop switch, foolproof



Attention: The preview is based on a sample product. This can differ from your current configuration.

Other Attributes

Weight 0,008 kg

Connection Method

Terminal Solder 2.8 x 0.5 mm

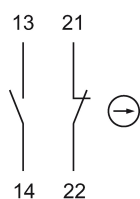
Switching element

Switching current 0.3 A
Switching system Slow-make switching element
Switching voltage 50 V AC/DC
Contact material
Contacts 1 NC + 1 NO

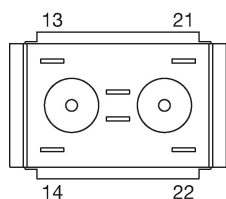
EAO – Your Expert Partner for Human Machine Interfaces

61-8775.37 - Switching element for stop switch, foolproof

Wiring diagram



Component layout



Legend

Contacts: NC = Normally closed, NO = Normally open