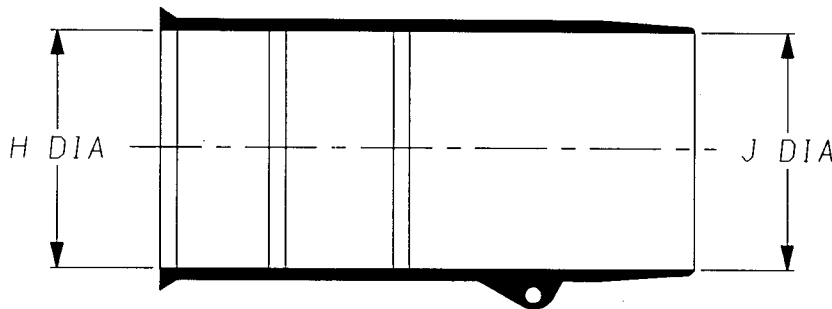
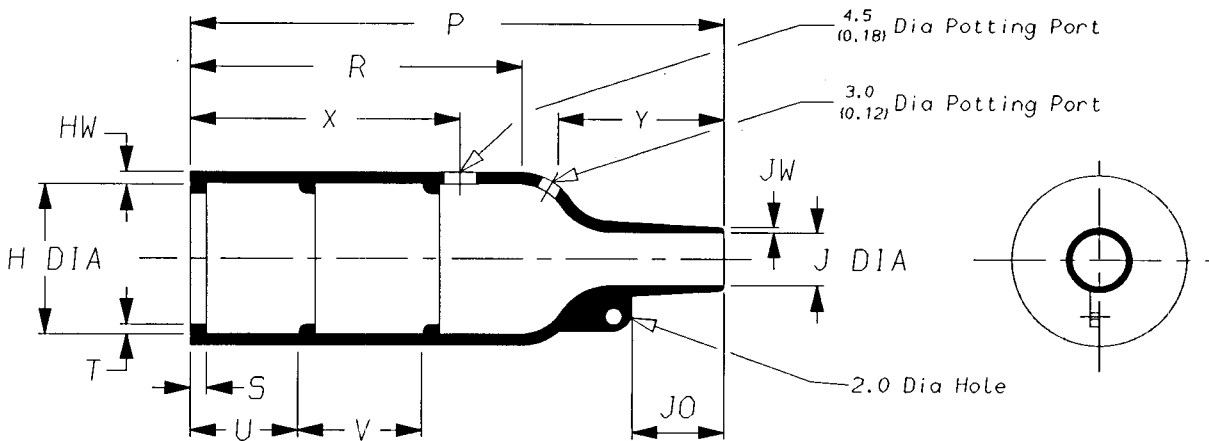


a) Part as supplied.

202K121 thru 185



b) Part after unrestricted recovery.



DIMENSIONS in millimetres
(in inches, for reference)

| Part No. | H | | J | | P | R | S | T | U&V | JO | HW | JW | X | Y |
|-----------|--------------|----------------|--------------|----------------|---------------|--------------|---------------|---------------|--------------|----------------|---------------|---------------|--------------|--------------|
| | Min a | Max b | Min a | Max b | ±10% b | ±10% b | ±10% b | ±10% b | ±10% b | ±10% b | ±20% b | ±20% b | ±20% b | ±20% b |
| ① 202K121 | 24 (0.94) | 10.4 (0.41) | 24 (0.94) | 5.6 (0.22) | 38 (1.50) | 21 (0.83) | 3.0 (0.12) | 1.0 (0.04) | 12 (0.47) | 8.5 (0.33) | 1.6 (0.06) | 0.9 (0.04) | 24 (0.94) | 13 (0.51) |
| ① 202K132 | 30 (1.18) | 14.2 (0.56) | 30 (1.18) | 5.9 (0.23) | 55 (2.17) | 32 (1.26) | 3.0 (0.12) | 1.0 (0.04) | 12 (0.47) | 11.5 (0.45) | 1.8 (0.07) | 1.0 (0.04) | 24 (0.94) | 18 (0.71) |
| ① 202K142 | 31 (1.22) | 18.0 (0.71) | 31 (1.22) | 7.1 (0.28) | 67 (2.64) | 35 (1.38) | 3.0 (0.12) | 1.0 (0.04) | 20 (0.79) | 17.0 (0.67) | 1.8 (0.07) | 1.0 (0.04) | 32 (1.26) | 25 (0.98) |
| ① 202K153 | 36 (1.42) | 22.4 (0.88) | 36 (1.42) | 8.4 (0.33) | 80 (3.15) | 42 (1.65) | 3.0 (0.12) | 1.0 (0.04) | 20 (0.79) | 19.5 (0.77) | 2.0 (0.08) | 1.0 (0.04) | 32 (1.26) | 30 (1.18) |
| 202K163 | 43 (1.69) | 28.2 (1.11) | 43 (1.69) | 9.9 (0.39) | 99 (3.90) | 61 (2.40) | 3.0 (0.12) | 1.7 (0.07) | 20 (0.79) | 21.0 (0.83) | 2.2 (0.09) | 1.2 (0.05) | 52 (2.05) | 30 (1.18) |
| 202K174 | 60 (2.36) | 35.1 (1.38) | 60 (2.36) | 15.7 (0.62) | 130 (5.12) | 72 (2.83) | 3.0 (0.12) | 1.7 (0.07) | 20 (0.79) | 39.0 (1.54) | 3.2 (0.13) | 1.5 (0.06) | 52 (2.05) | 50 (1.97) |
| 202K185 | 66 (2.60) | 44.5 (1.75) | 66 (2.60) | 16.8 (0.66) | 170 (6.69) | 90 (3.54) | 3.0 (0.12) | 2.0 (0.08) | 20 (0.79) | 51.5 (2.03) | 3.8 (0.15) | 2.0 (0.08) | 52 (2.05) | 70 (2.76) |

② See over for explanation of Notes ① and ②

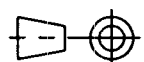
Copyright (!)

The copyright in this drawing is the property of Tyco Electronics UK Ltd. The drawing is issued on the condition that it is not copied, reproduced or disclosed to a third party, either in whole or in part without the prior written consent of Tyco Electronics UK Ltd.

Drawn A.LILLEY. Checked *AK* Issue 14 Date February 2005 Conforms to 150 Recommendations

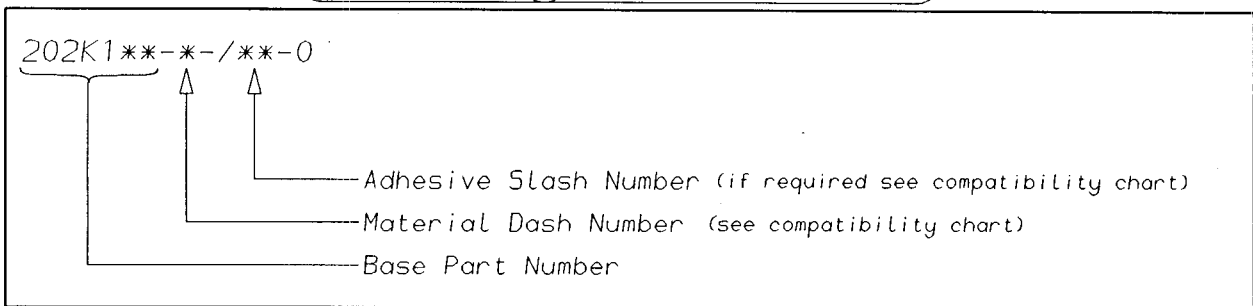
Approval
Design *AK* MKTG. *AK* Q.A.

3rd Angle Projection
Not to Scale



| Raychem | | Specification | Part Number |
|----------------|---------------|------------------------|--|
| | | Control Drawing | 202K121 thru 185 Issue 14 |
| Iss. | Date | E.C.R. No. | Details of Change |
| 7 | August 1986 | 4865 | Jo Dimension moved, & 2.0 Dia note added |
| 8 | August 1986 | 4865 | Jo dimension changed |
| 9 | February 2000 | CR00-HM-0001 | Injection point note added |
| 10 | April 2001 | CR01-HM-0008 | Redrawn to include inches |
| 11 | February 2002 | CR02-HM-0003 | /180 added to -3 & -4 |
| 12 | March 2002 | CR02-HM-0001 | Note ⑨ added (on 121 JW is 0.9 for -25) |
| 13 | June 2002 | CR02-HM-0001v2 | Note ⑨ removed |
| 14 | February 2005 | H0307 | JW was 1.0 |

(Ordering Information)



(COMPATIBILITY CHART)

| Material Dash Number | Material Description | SPEC Number | Coating Slash Number |
|----------------------|---------------------------------|------------------|----------------------|
| -3 | POLYOLEFIN, SEMI-RIGID | RT-301, RK-6703 | /42, /86, /180 |
| -4 | POLYOLEFIN, FLEXIBLE | RT-1304, RT-1050 | /42, /86, /180 |
| -6 | SILICON | RT-602, RK-6706 | N/A |
| -25 | ELASTOMER, FLUID RESISTANT | RT-1325, RK-6713 | /42, /86, /225 |
| -130 | POLYOLEFIN, COMMERCIAL FLEXIBLE | RW-2008 | /42 |
| | | | |

NOTES

- ① Supplied with 2 Lips only, Dimension V does not apply.
- ② Potting Port X @ 90° to Potting Port Y on 202K121.
- ③ If eyelet clip (000W212) is required with part then add C5-1858 to description (i.e. 202K132-3-0-C5-1858).
- ④ As supplied dimensions are for uncoated parts, when coating is added entry diameters will reduce by 1.5mm Max.
- ⑤ Potting Ports are optional, when specified by suffix -00 they will be located as shown.
- ⑥ For -12 SCD see 202K121 thru 185-12.
- ⑦ For -100 SCD see 202K121 thru 185-100.
- ⑧ On some parts a bump or depression at the material injection point may exist as a normal manufacturing process.

| | |
|--|---|
| Tyco electronics UK Ltd. Faraday Road, Swindon, Wiltshire, SN3 5HH England Telephone: (01793) 528171 Fax: 572516 | Tyco electronics Corporation 300, Constitution Drive, Menlo Park, CA 94025 USA Telephone (650) 361-3860 Fax: (650) 361-5579 |
| Cage Code K1010 | Cage Code 06090 |