



Features

- ◆ Low profile case, module depth only 55mm
- ◆ Fits into flat control panels used in building automation
- ◆ Safety class II product
- ◆ UL 1310 class II, NEC class 2 compliance (models up to 90 W)
- ◆ UL 508 listed
- ◆ 5 power ranges from 15 to 150 W
- ◆ Universal input range 85 to 264 VAC
- ◆ Operating temperature range: -25°C to +70°C max.
- ◆ Adjustable output voltage
- ◆ Short circuit and overload protection
- ◆ DC-OK indicator
- ◆ Easy snap-on mounting on DIN-rail or with wall mounting bracket (included)
- ◆ 3-year product warranty



The TBL series is a new range of small DIN-rail mount power supplies which have been designed particularly with building- and factory automation applications in mind. The ultra-compact low profile cases fit in the standardized wall mounted control panels used in the building automation industry. The power supplies can be operated at full load across an ambient temperature range of -25°C to +60°C without need of additional cooling. Universal input voltage range and full compliance with all important safety and EMC standards qualifies the TBL series power supplies for worldwide markets. For commercial and residential applications requesting safety class II the models up to 90 Watt are approved to UL 1310.

Models

Order Code	Output Power (max.)	Output Voltage* (nom.)	Output Current (max.)	Efficiency (typ.)
TBL 015-105	12 W	5.0 VDC	2.4 A	73 %
TBL 015-112	15 W	12 VDC	1.25 A	79 %
TBL 015-124	15 W	24 VDC	0.63 A	81 %
TBL 030-112	30 W	12 VDC	2.5 A	81 %
TBL 030-124		24 VDC	1.25 A	83 %
TBL 060-112	54 W	12 VDC	4.5 A	83 %
TBL 060-124	60 W	24 VDC	2.5 A	85 %
TBL 090-112	72 W	12 VDC	6.0 A	86 %
TBL 090-124	90 W	24 VDC	3.75 A	86 %
TBL 150-112	120 W	12 VDC	10 A	84 %
TBL 150-124	150 W	24 VDC	6.25 A	87 %

* adjustable

Specifications are subject to change without notice. It is responsibility of each customer to thoroughly test each product and part number under their unique parameters and environments to ensure a product will work properly and reliably.

Click below for more details, to buy on-line or request volume pricing:
<http://power.sager.com/traco-power-tbl060-power-supply.html>

(866) 588-1750
 power@sager.com
<http://power.sager.com>

Input Specifications

Input voltage	- AC nominal rated		100 – 240 VAC; 50/60 Hz
		TBL 150 models:	100 – 120 / 220 – 240 VAC; 50/60 Hz
	- AC range (designed for)		85 – 264 VAC; 47 – 63 Hz
		TBL 150 models:	85 – 132 / 187 – 264 VAC; 47 – 63 Hz
	- DC range (designed for)		120 – 373 VDC (except TBL 150 models)
	- Power derating at low input voltage		5% below 90 VAC or 127 VDC
Harmonic limits			EN 61000-3-2, Class A
Recommended circuit breaker (characteristic C or slow blow fuse)			6.0 A

Output Specifications

Output voltage adjustable range		5 VDC model:	5.0 – 5.2 VDC
		12 VDC models:	12 – 16 VDC
		24 VDC models:	24 – 28 VDC
Output regulation			1 %
Ripple and noise (20MHz bandwidth)			<100 mV pk-pk
Electronic short circuit protection			current limitation at 100 – 150 % typ. (automatic recovery)
Overvoltage protection, trigger point		5 VDC model:	5.5 – 7.5 VDC
		12 VDC models:	16 – 24 VDC
		TBL 030-124, TBL 150-124:	30 – 37 VDC
		TBL 015-124, TBL 060-124, TBL 090-124:	29 – 44 VDC
Hold-up time		115 VAC	230 VAC
		min. 10 ms	min. 20 ms

General Specifications

Temperature ranges	- Operating	-25°C to +70°C max.			
	- Storage	-40°C to +85°C max.			
Power derating		2.5 %/K above 60°C			
Humidity (non condensing)		5 – 95 % rel. H			
Temperature coefficient		0.02 %/K			
Reliability, calculated MTBF at +25°C acc. to IEC 61709		TBL 015:	>1.5 Mio h		
		TBL 060:	>2.1 Mio h		
		all other models:	>1.3 Mio h		
Safety standards and certification www.tracopower.com/products/tbl-certification.zip		UL 508 listed UL 1310, class II (15 – 90 W models) IEC 60950-1 2nd, EN 60950-1:2006+ Am1:2010 +Am11:2009 +Am12:2011 EN 50178, EN 60204-1, EN 61558-2-16 CAN/CSA-C22.2 No. 60950-1-07 UL 60950-1 2nd			
Electromagnetic compatibility (EMC), emissions		EN 61000-6-3 EN 55022 class B EN 55022 class B			
Electromagnetic compatibility (EMC), immunity		EN 61000-6-2			
- Electrostatic discharge (ESD)		EN 61000-4-2	4 kV / 8 kV	criteria B	
- Radiated RF field immunity		EN 61000-4-3	10 V/m	criteria A	
- Electrical fast transient / burst immunity		EN 61000-4-4	±2 kV	criteria B	
- Surge immunity line – ground		EN 61000-4-5	2 kV	criteria B	
- Surge immunity line – line		EN 61000-4-5	1 kV	criteria B	
- Immunity to conducted RF disturbances		TBL 90/150:	EN 61000-4-6	3 V	criteria A
- Immunity to conducted RF disturbances		other models:	EN 61000-4-6	10 V	criteria A
- Magnetic field immunity		EN 61000-4-8	100 A/m	criteria A	
- Mains voltage dips and interruptions		EN 61000-4-11			
- Voltage Sag immunity		SEMI F47-0706			

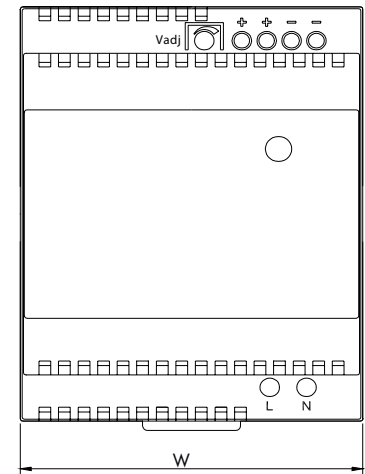
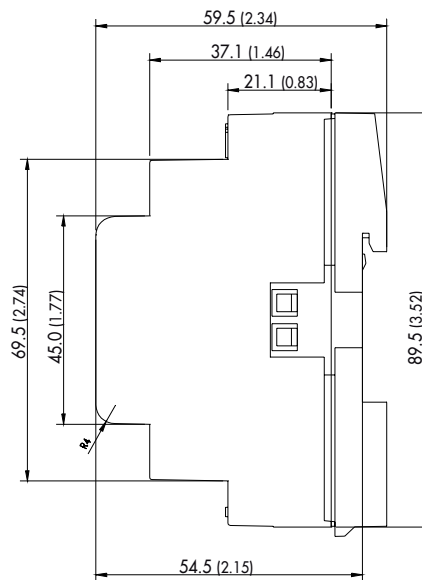
Specifications are subject to change without notice. It is responsibility of each customer to thoroughly test each product and part number under their unique parameters and environments to ensure a product will work properly and reliably.

General Specifications

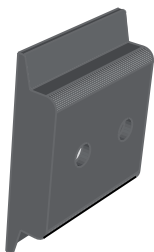
Protection class	class II as per IEC/EN 61140	
Case protection	IP 20 (IEC 60529)	
Environment	- Vibration acc. IEC 60068-2-6; - Shock acc. IEC 60068-2-27	3 axis, sine sweep, 10 – 55 Hz, 0.075 mm 3 axis, 15 g half sine, 11 ms
Enclosure material	plastic FR2010-110C (UL 94V-0 rated)	
Mounting	DIN-rails as per EN 50022-35x15/7.5 (snap-on with self-locking spring or wall mounting with bracket) (included)	
Connection	screw terminals with combi-type screw heads for wire size 0.5 – 1.5 mm ²	
Installation instructions	www.tracopower.com/products/tbl-inst.pdf	
Environmental compliance	- Reach - RoHS	www.tracopower.com/overview/tbl RoHS directive 2011/65/EU

Case Dimensions

Model	Width (W) mm (inch)	Weight g (oz)
TBL 015	26.3 (1.04)	100 (3.53)
TBL 030	52.5 (2.07)	160 (5.64)
TBL 060	70.0 (2.76)	230 (8.11)
TBL 090	105.0 (4.13)	340 (12.0)
TBL 150	175 (6.89)	625 (22.0)



Dimensions in [mm], () = Inch
 Tolerances: ±0.5 mm (±0.02)



Wall Mounting Bracket

Instead on a DIN-rail, the modules can be also mounted on a chassis or wall with help of a mounting bracket which is supplied as standard with each power supply

Wiring

	Description	Wire size
AC Input	all models: L, N only (2 pin terminal)	AWG 26 – 16 / 1.5 mm ² max.
DC Output	15 – 30 W models: single terminal	AWG 26 – 14 / 1.5 mm ² max.
DC Output	60 – 150 W models: double terminal	AWG 26 – 14 / 1.5 mm ² max.