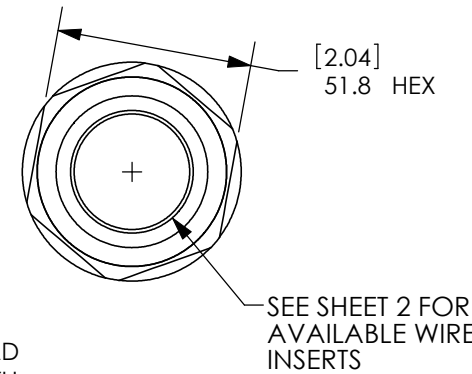
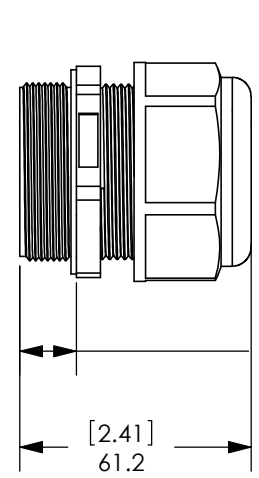
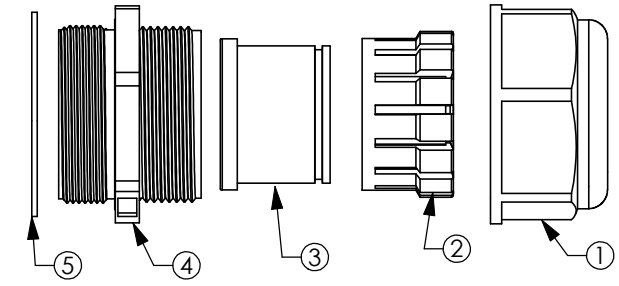
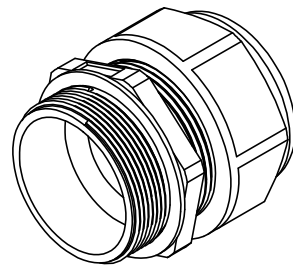


THE INFORMATION CONTAINED IN THIS DRAWING IS THE SOLE PROPERTY OF ANDERSON POWER PRODUCTS. ANY REPRODUCTION IN PART OR WHOLE WITHOUT THE WRITTEN PERMISSION OF ANDERSON POWER PRODUCTS IS PROHIBITED.

Copyright 2010

ANDERSON POWER PRODUCTS RESERVES THE RIGHT TO ALTER PRODUCT TYPES, THEIR TECHNICAL DATA, DIMENSION, STYLE AND ACCESSORIES WITHOUT PRIOR NOTIFICATION.



ITEM	QTY	DESCRIPTION	MATERIAL
1	1	CABLE SEALING NUT	NYLON, BLACK, UL94 V-2
2	1	CLAW	NYLON, BLACK, UL94 V-2
3	1	WIRE SEAL	EPDM, BLACK
4	1	PG GLAND BODY	NYLON, BLACK, UL94 V-2
5	1	GASKET	EPDM, BLACK

SEE SHEET 2 FOR LIST OF PART NUMBERS AND WIRE SEAL ARRANGEMENTS

NOTES:

- GLANDS FOR USE ON HIGH POWER SPEC PAK™ ONLY
- ALL MATERIALS ROHS COMPLIANT
- REFER TO ASSEMBLY INSTRUCTION 1S6554

DIMENSIONS ARE IN:	MM [INCH]	<i>APPROVALS</i>			<i>ANDERSON POWER PRODUCTS</i>			
UNLESS OTHERWISE STATED		DRAWN			TITLE			
TOLERANCES:		CMS	12/21/2010	PG-36 CABLE SEALING GLANDS FOR SPEC PAK™				
DECIMALS (INCH)	DECIMALS (MM)	ANGLES		CHECKED	LLD	12/21/2010		
.XX ± .02	.X ± .5	± 2°		MFG APPRV	CHB	12/21/2010		
SURFACE FINISH:				QC APPRV	UFN	12/21/2010		
MACHINED		128 [3.2]	✓	ENG APPRV	BD	12/21/2010	SIZE	
MOLDED		64 [1.6]	✓				DWG NO.	
MATERIAL:							115054S1	
FINISH:							REV.	
							0	
3rd ANGLE PROJECTION				-CAD GENERATED DRAWING- DO NOT MANUALLY UPDATE DO NOT SCALE		SCALE	CADFILE	SHEET
				NONE		03361	1 OF 2	

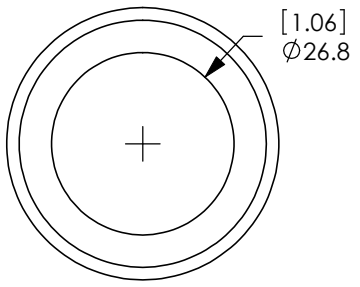
REV.	DESCRIPTION	APPRV	DATE
REVISIONS			

THE INFORMATION CONTAINED IN THIS DRAWING IS THE SOLE PROPERTY OF ANDERSON POWER PRODUCTS. ANY REPRODUCTION IN PART OR WHOLE WITHOUT THE WRITTEN PERMISSION OF ANDERSON POWER PRODUCTS IS PROHIBITED.

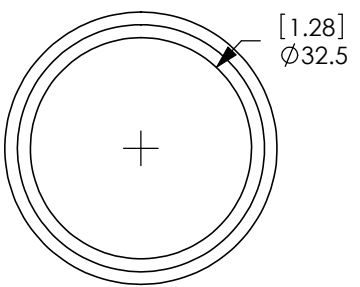
Copyright 2010

ANDERSON POWER PRODUCTS RESERVES THE RIGHT TO ALTER PRODUCT TYPES, THEIR TECHNICAL DATA, DIMENSION, STYLE AND ACCESSORIES WITHOUT PRIOR NOTIFICATION.

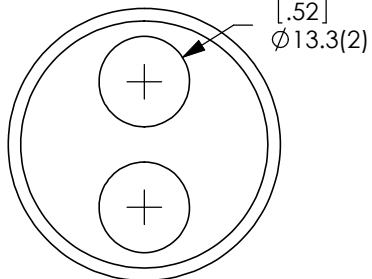
PS1P36-26X



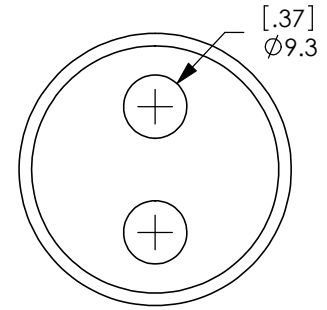
PS1P36-32X



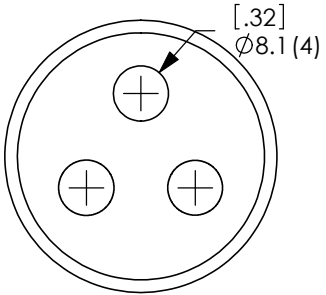
PS2P36-13X



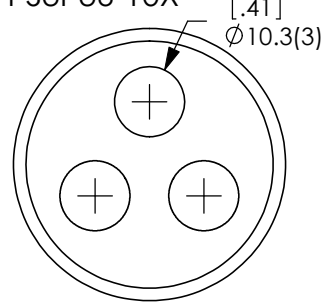
PS2P36-9X



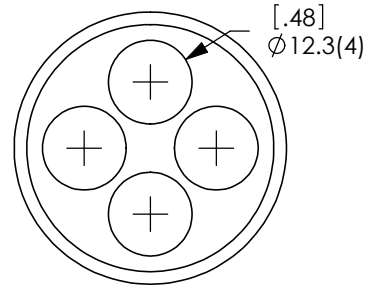
PS3P36-7X



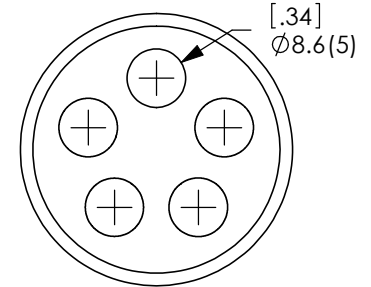
PS3P36-10X



PS4P36-12X



PS5P36-8X



WIRE SEALING RANGE

GLAND P/N	SPEC PAK CODE	WIRE SEALING RANGE			
		mm		INCHES	
		MIN	MAX	MIN	MAX
PS1P36-26X	PS03	21.0	26.5	0.83	1.04
PS1P36-32X	PS04	24.0	32.0	0.94	1.26
PS2P36-13X	PM21	11.0	13.0	0.43	0.51
PS2P36-9X	PM22	7.0	9.0	0.28	0.35
PS3P36-7X	PM31	6.5	7.8	0.26	0.31
PS3P36-10X	PM32	7.7	10.0	0.30	0.39
PS4P36-12X	PM41	10.0	12.0	0.39	0.47
PS5P36-8X	PM51	6.5	8.3	0.26	0.33

DIMENSIONS ARE IN:	MM [INCH]	APPROVALS			ANDERSON POWER PRODUCTS	
UNLESS OTHERWISE STATED		DRAWN			TITLE PG-36 CABLE SEALING GLANDS FOR SPEC PAK™	
TOLERANCES:		CMS	12/21/2010			
DECIMALS (INCH)	DECIMALS (MM)	ANGLES				
.XX ± .02	.X ± .5	± 2°				
SURFACE FINISH:		QC APPRV				
MACHINED	128 [3.2]	CHB	12/21/2010			
MOLDED	64 [1.6]	UFN	12/21/2010			
MATERIAL:		ENG APPRV				
FINISH:		BD	12/21/2010	SIZE	DWG NO.	REV.
				A	115054S1	0
		-CAD GENERATED DRAWING- DO NOT MANUALLY UPDATE DO NOT SCALE		SCALE	CADFILE	SHEET
				NONE	03361	2 OF 2