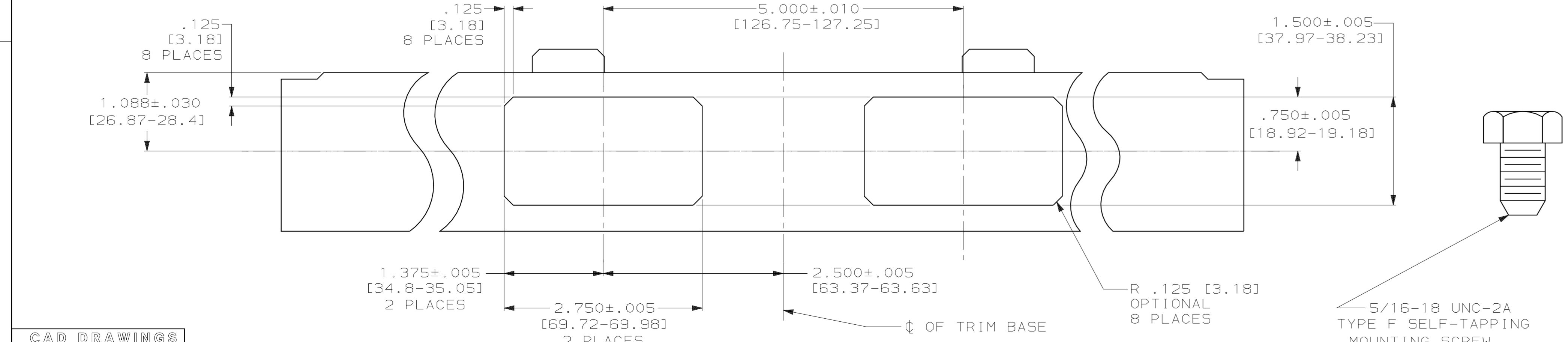
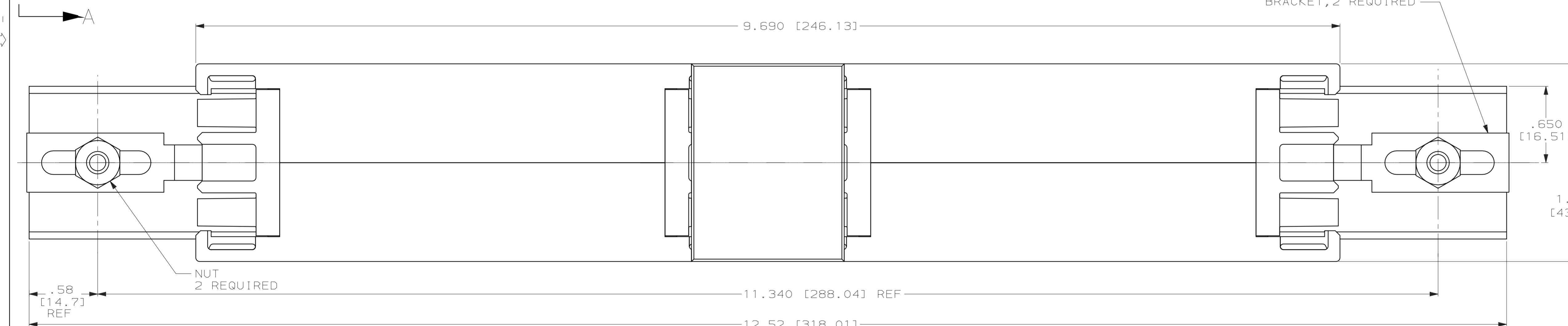
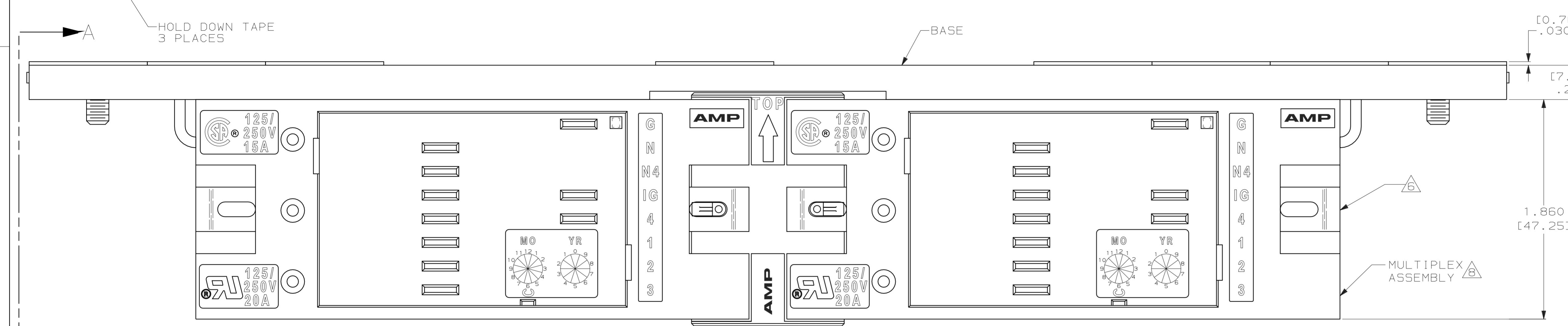
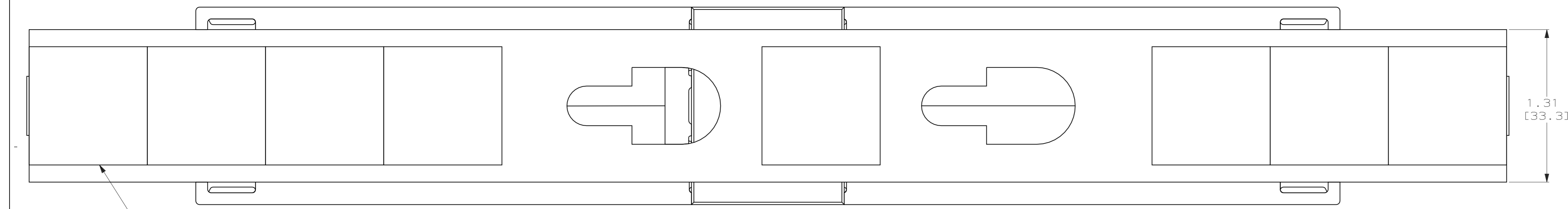
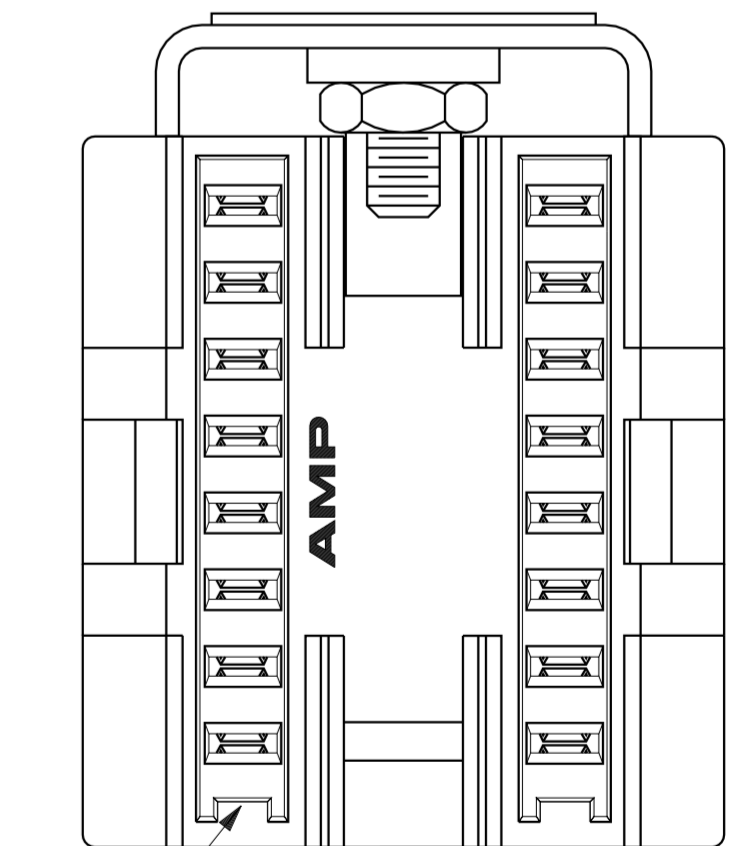


LOC		DIST		P		F		ZONE		LTR		REVISIONS			
AA	27											DESCRIPTION	DATE	APPD	
												A	RLSD, NPR C91-5	1-30-91	VS



SUGGESTED CUTOUT DIMENSIONS FOR STEELCASE 9000 TRIM BASE
 SCALE 1:1

- △ ALL DIMENSIONS SHOWN ARE MAXIMUM UNLESS OTHERWISE SPECIFIED.
- 2. DIMENSIONS SHOWN IN BRACKETS [] ARE IN MILLIMETERS.
- △ MATERIAL: MULTIPLEX HOUSING - POLYCARBONATE, 94V-0, BLACK.
 BASE & BRACKET - CARBON STEEL, ZINC PLATED .32 OZ PER SQUARE FOOT MINIMUM THICKNESS.
 MULTIPLEX TERMINALS - COPPER ALLOY SELECTIVE TIN PLATED .000200 [5.08 μm] MINIMUM THICK AND SELECTIVE SILVER PLATED .000200 [5.08 μm] MINIMUM THICK.
 SCREWS AND NUTS - ZINC PLATED CARBON STEEL.
 HOLD DOWN TAPE - .030 THICK FOAM WITH ADHESIVE BOTH SIDES.
- 4. THIS KIT SHOWN ASSEMBLED BUT IS SHIPPED LOOSE.
- △ KEYING FEATURE FOR POSITIVE MATING.
- △ POSITIVE LATCHING TO POWER CONNECTOR.
- 7. 125/250V, 20A RATING FOR ⚡.
- △ THIS DRAWING SHOWS A MULTIPLEX ASSEMBLY INCLUDED WITH THIS KIT, BUT THE MULTIPLEX ASSEMBLY SHALL BE ORDERED SEPARATELY. ONE MULTIPLEX ASSEMBLY 5-WIRE, PN 556886-1, OR ONE MULTIPLEX ASSEMBLY 8-WIRE, PN 556946-1 REQUIRED WITH EACH BRACKET/HARDWARE KIT.



CAD DRAWINGS
 THIS DRAWING WAS CREATED ON A COMPUTER AIDED DESIGN (CAD) SYSTEM. TO INSURE THE INTEGRITY OF THE DATA BASE ALL CHANGES/REVISIONS MUST BE MADE ON THE CAD SYSTEM.

DO NOT SCALE PRINT. UNLESS SPECIFIED DIMENSIONS IN INCHES [mm]		DR VIC SLACK 1-30-91		AMP Incorporated Harrisburg, PA 17105-3608	
TOLERANCES ON:		CHK			
2 PLC DEC ±		APPD		NAME	
3 PLC DEC ±		APPD		HARDWARE KIT, UNIVERSAL RACEWAY MOUNT	
ANGLES ±		APPD		SIZE	
MATERIAL		PRODUCT SPEC		D 00779	
FINISH		APPLICATION SPEC		DRAWING NO	
5/16-18 UNC-2A TYPE F SELF-TAPPING MOUNTING SCREW 2 REQUIRED		-		556944	
WEIGHT		-		SCALE	
		-		2:1	
				SHEET	
				1 OF 1	