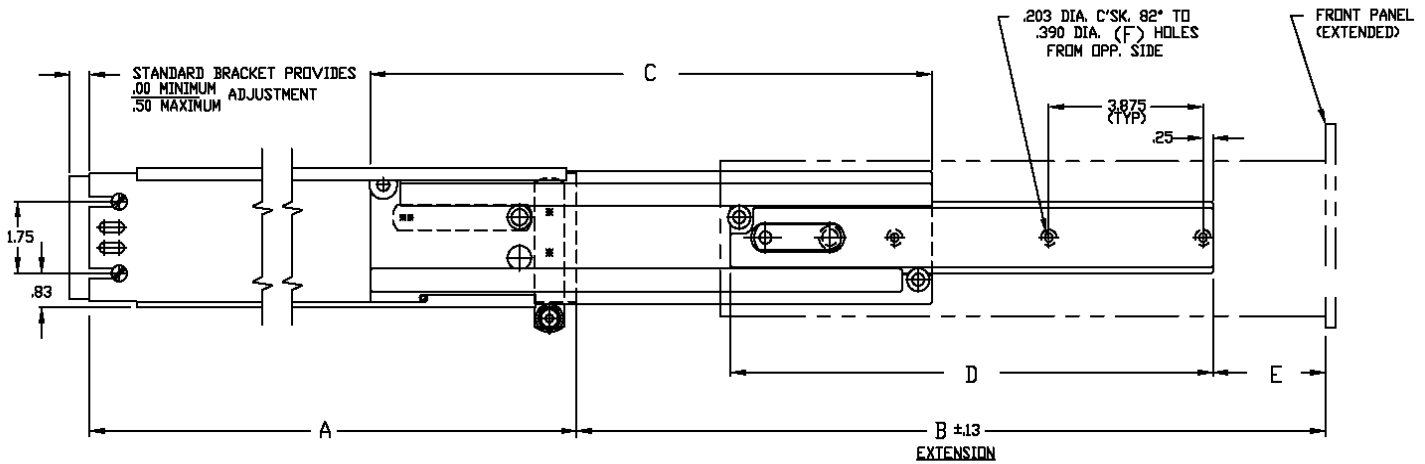
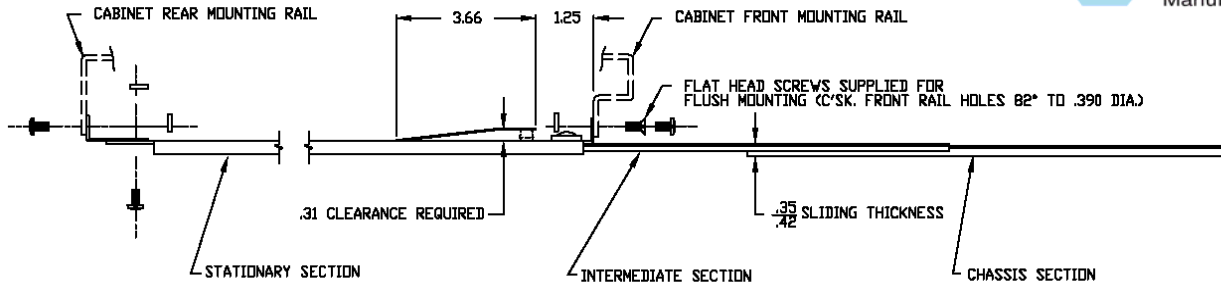
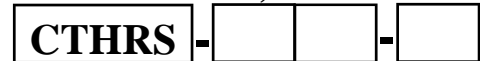


CTHRS Slide



| Catalog Number | A | B (min) | B (max) | C | D | E (min) | E (max) | F | Load Capacity |
|----------------|-------|---------|---------|-------|-------|---------|---------|---|---------------|
| CTHRS-114 | 14.00 | 13.75 | 15.63 | 13.00 | 12.13 | 0.00 | 1.88 | 3 | 275 LBS. |
| CTHRS-116 | 16.00 | 15.75 | 19.63 | 15.00 | 12.13 | 0.00 | 3.88 | 3 | 275 LBS. |
| CTHRS-118 | 18.00 | 21.63 | 23.63 | 17.00 | 16.00 | 0.00 | 2.00 | 4 | 275 LBS. |
| CTHRS-120 | 20.00 | 23.63 | 27.63 | 19.00 | 16.00 | 0.00 | 4.00 | 4 | 275 LBS. |
| CTHRS-122 | 22.00 | 23.63 | 29.63 | 21.00 | 16.00 | 0.00 | 6.00 | 4 | 275 LBS. |
| CTHRS-124 | 24.00 | 24.25 | 31.63 | 23.00 | 16.00 | 0.63 | 8.00 | 4 | 275 LBS. |

TO ORDER, SPECIFY

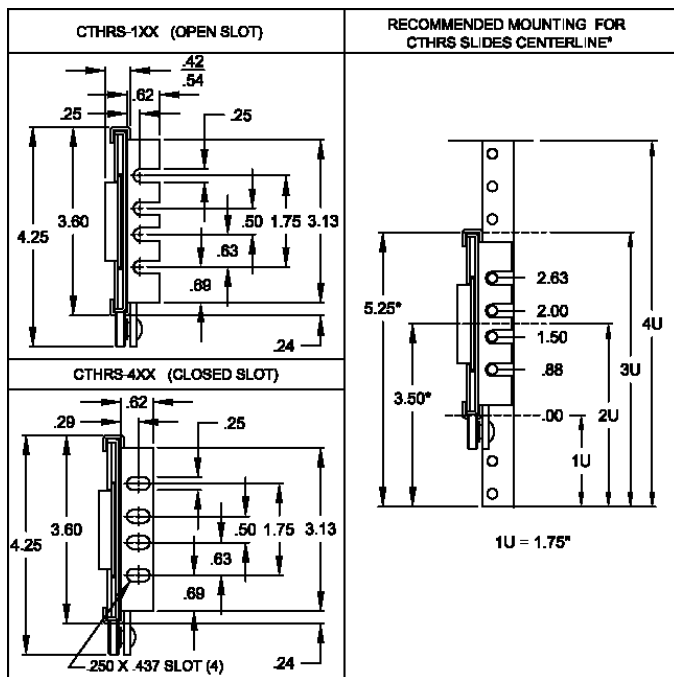


Stationary Section
 1 - Cabinet Mount
 2 - Strap Mount
 4 - Closed Slot

Length

AR - Automatic Release if desired

For information on Strap Mount option see page 28.

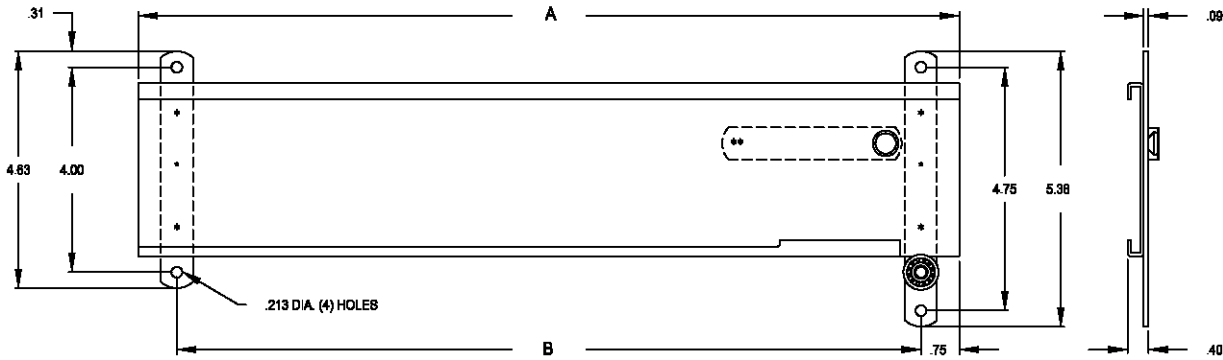


Notes

1. Right hand shown, left hand opposite.
2. Finish: All standard slides are coated with Poxylube™ dry film lubricant.
3. All standard slides are designed to lock-out in the extended position and are available with an optional automatic release if lock-out is not desirable.
4. Standard hardware packages include all the hardware necessary to mount your Chassis Trak® slides:
 - Rear mounting bracket (B-131) included
 - Bar nuts (CA8056-06-0020)
 - #10-32 screws and keps nuts
5. All sliding members of the standard slide are made from cold rolled steel.
6. All Chassis Trak® solid bearing slides are supplied with a quick disconnect feature.
7. Optional mounting patterns, slide lengths and extensions are available.
8. Pickup tab available for units without a front panel.
9. For optional mounting brackets see page 35.

Strap Mounting Option

CTRS Strap Mount

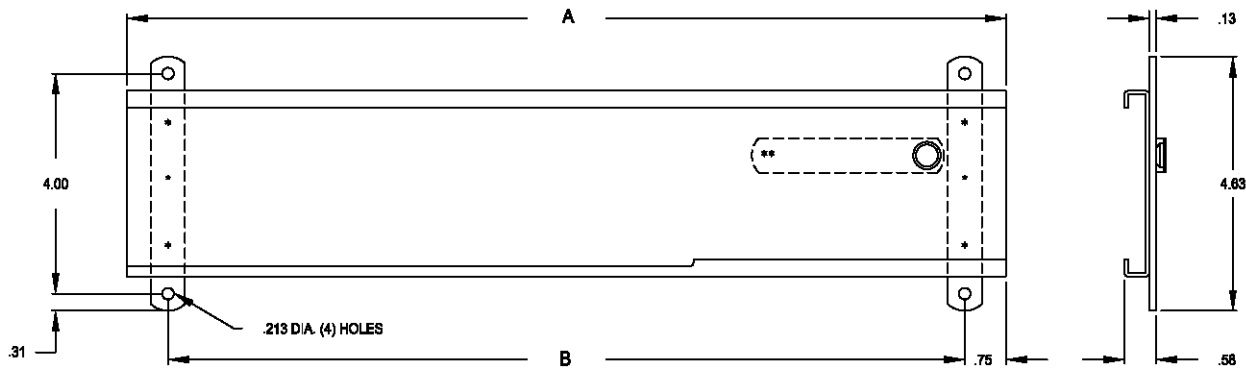


| A | B |
|-------|-------|
| 12.00 | 10.50 |
| 14.00 | 12.50 |
| 16.00 | 14.50 |
| 18.00 | 16.50 |
| 20.00 | 18.50 |
| 22.00 | 20.50 |
| 24.00 | 22.50 |

Notes

1. To order, specify **CTRS-2[XX]** see pages 20-21 for more information.
2. Strap mount slides are not designed to accommodate the standard EIA hole pattern.
3. All slides requires a .31" clearance behind the spring and button assembly for proper operation.

CTHS Strap Mount

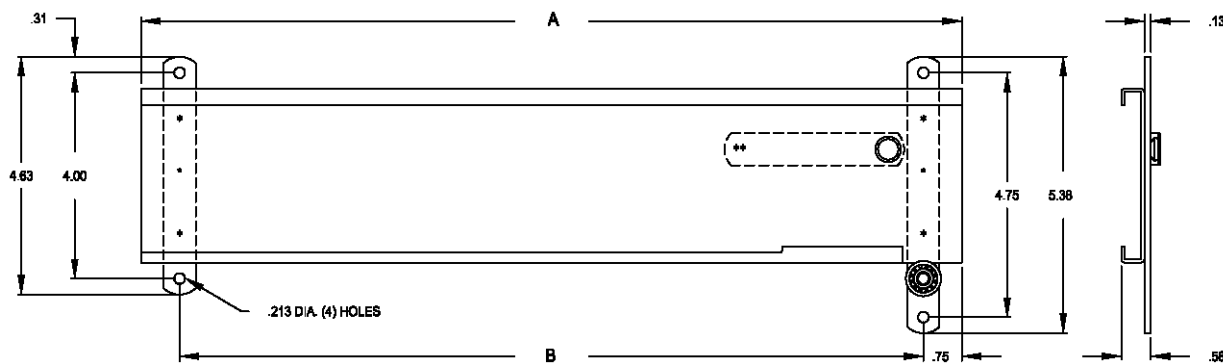


| A | B |
|-------|-------|
| 12.00 | 10.50 |
| 14.00 | 12.50 |
| 16.00 | 14.50 |
| 18.00 | 16.50 |
| 20.00 | 18.50 |
| 22.00 | 20.50 |
| 24.00 | 22.50 |

Notes

1. To order, specify **CTHS-2[XX]** see pages 22-23 for more information.
2. Strap mount slides are not designed to accommodate the standard EIA hole pattern.
3. All slides requires a .31" clearance behind the spring and button assembly for proper operation.

CTHRS Strap Mount



| A | B |
|-------|-------|
| 12.00 | 10.50 |
| 14.00 | 12.50 |
| 16.00 | 14.50 |
| 18.00 | 16.50 |
| 20.00 | 18.50 |
| 22.00 | 20.50 |
| 24.00 | 22.50 |

Notes

1. To order, specify **CTHRS-2[XX]** see pages 24-25 for more information.
2. Strap mount slides are not designed to accommodate the standard EIA hole pattern.
3. All slides requires a .31" clearance behind the spring and button assembly for proper operation.

Optional Mounting Brackets



| Matrix For Solid Bearing Slides & Appropriate Rear Mounting Brackets with Range of Extension | | | | | | | | | | |
|--|----------|-------------|-------------|--------------|--------------|--------------|--------------------|--------------------|-----------|-----------|
| | B-131* | B-131-2 | B-131-2.5 | B-131-3 | B-131-3.5 | B-131-4 | B-307-1 B-814-1 | B-307-2 B-814-2 | B-810-1 | B-810-2 |
| C-230-D | 0 to .50 | .44 to 1.06 | .94 to 1.56 | 1.44 to 2.06 | 1.94 to 2.56 | 2.44 to 3.06 | 0 to 4.00 | 0 to 8.00 | | |
| C-230-S | 0 to .50 | .44 to 1.06 | .94 to 1.56 | 1.44 to 2.06 | 1.94 to 2.56 | 2.44 to 3.06 | 0 to 4.00 | 0 to 8.00 | | |
| CTD | 0 to .50 | .44 to 1.06 | .94 to 1.56 | 1.44 to 2.06 | 1.94 to 2.56 | 2.44 to 3.06 | 0 to 4.00 | 0 to 8.00 | | |
| CTS | 0 to .50 | .44 to 1.06 | .94 to 1.56 | 1.44 to 2.06 | 1.94 to 2.56 | 2.44 to 3.06 | 0 to 4.00 | 0 to 8.00 | | |
| CTR D | 0 to .50 | .44 to 1.06 | .94 to 1.56 | 1.44 to 2.06 | 1.94 to 2.56 | 2.44 to 3.06 | 0 to 4.00 | 0 to 8.00 | | |
| CTR S | 0 to .50 | .44 to 1.06 | .94 to 1.56 | 1.44 to 2.06 | 1.94 to 2.56 | 2.44 to 3.06 | 0 to 4.00 | 0 to 8.00 | | |
| CTHD | 0 to .50 | .44 to 1.06 | .94 to 1.56 | 1.44 to 2.06 | 1.94 to 2.56 | 2.44 to 3.06 | | | 0 to 4.00 | 0 to 8.00 |
| CTHS | 0 to .50 | .44 to 1.06 | .94 to 1.56 | 1.44 to 2.06 | 1.94 to 2.56 | 2.44 to 3.06 | | | 0 to 4.00 | 0 to 8.00 |
| CTHR D | 0 to .50 | .44 to 1.06 | .94 to 1.56 | 1.44 to 2.06 | 1.94 to 2.56 | 2.44 to 3.06 | | | 0 to 4.00 | 0 to 8.00 |
| CTHR S | 0 to .50 | .44 to 1.06 | .94 to 1.56 | 1.44 to 2.06 | 1.94 to 2.56 | 2.44 to 3.06 | | | 0 to 4.00 | 0 to 8.00 |
| C-857 | 0 to .50 | .44 to 1.06 | .94 to 1.56 | 1.44 to 2.06 | 1.94 to 2.56 | 2.44 to 3.06 | | | | |

Note brackets are made from 16 gauge C.R.S. — Standard finish: clear zinc commercial plating

*Supplied with standard slides

| CATALOG NUMBER | A |
|----------------|------|
| B-131 | 1.56 |
| B-131-2 | 2.00 |
| B-131-2.5 | 2.50 |
| B-131-3 | 3.00 |
| B-131-3.5 | 3.50 |
| B-131-4 | 4.00 |

| CATALOG NUMBER | A | B | C |
|-----------------------------|------|------|----|
| B-307-1 / B-810-1 / B-814-1 | 5.94 | 4.38 | 16 |
| B-307-2 / B-810-2 / B-814-2 | 9.69 | 8.13 | 28 |