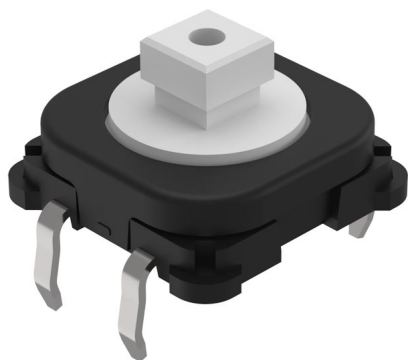


EAO – Your Expert Partner for Human Machine Interfaces

70-201.0 - Switching element without illumination

70-201.0 - Switching element without illumination



Attention: The preview is based on a sample product. This can differ from your current configuration.

Other Attributes

Weight 0,001 kg

Connection Method

Terminal PCB

Actuator

Switching action Momentary

Switching element

Contact material
Switching system Short-travel element
Contacts 1 NO
Switching voltage 42 V AC/DC
Switching current 0.1 A

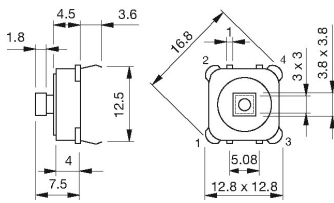
Function

Pushbutton

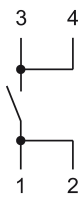
EAO – Your Expert Partner for Human Machine Interfaces

70-201.0 - Switching element without illumination

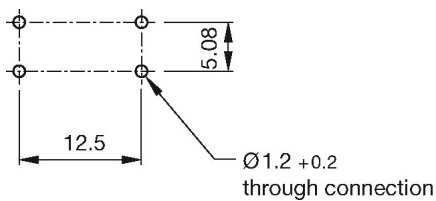
Dimensions



Wiring diagram



Component layout



Additional information

with spacing cap

Dimensions with fitted spacing cap see details «Spacing cap»

Legend

Contacts: NO = Normally open

Switching action: B = Momentary