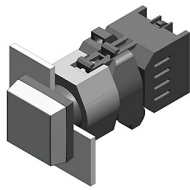


EAO – Your Expert Partner for Human Machine Interfaces

704.200.5 - Flasher actuator full face illumination

704.200.5 - Flasher actuator full face illumination



Attention: The preview is based on a sample product. This can differ from your current configuration.

Mounting

Mounting cut-out Ø 22,3 mm
Design raised

Front

Front shape square
Front bezel material Plastic
Front bezel colour grey
Front dimension 30 mm x 30 mm

Other Attributes

Weight 0,050 kg
Diffusor cap white translucent
Diffusor cap colour white
Diffusor cap illumination illuminative
Diffusor cap optical effect translucent

Operating-/Indication part

Lens cap colour green
Lens cap optical effect transparent
Lens cap material Plastic

IP-Rating

Front protection IP65

Connection Method

Terminal Screw terminal

Actuator

Housing material Plastic
Housing colour black

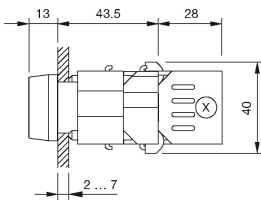
Function

Flasher

EAO – Your Expert Partner for Human Machine Interfaces

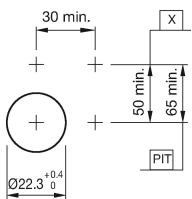
704.200.5 - Flasher actuator full face illumination

Dimensions



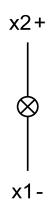
X = Screw terminal

Mounting cut-outs



PIT = Push-in terminal

Wiring diagram



Additional information

Filament lamp or LED