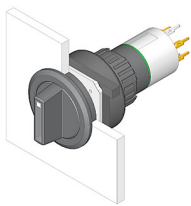


# EAO – Your Expert Partner for Human Machine Interfaces

## 52-433.036 - Selector switch actuator 2 positions square, flush design

### 52-433.036 - Selector switch actuator 2 positions square, flush design



*Attention: The preview is based on a sample product. This can differ from your current configuration.*

#### Mounting

Design flush

#### Other Attributes

Weight 0,007 kg

#### Operating-/Indication part

Switching angle 42° right

Lever illumination

Lever shape short

Lever material Plastic

#### IP-Rating

Front protection IP65

#### Connection Method

Terminal Universal 2.0 x 0.5 mm

#### Actuator

Switching action Rest - Momentary

#### Switching element

Rotary positions 2

Switching system Low-level element

Contacts 1 NC + 1 NO

Switching voltage 42 V AC/DC

Switching current 0.1 A

Contact material gold-plated silver

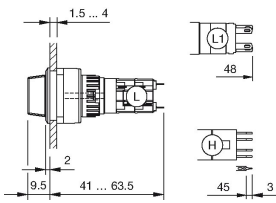
#### Function

Selector switch

# EAO – Your Expert Partner for Human Machine Interfaces

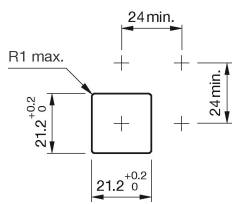
## 52-433.036 - Selector switch actuator 2 positions square, flush design

### Dimensions

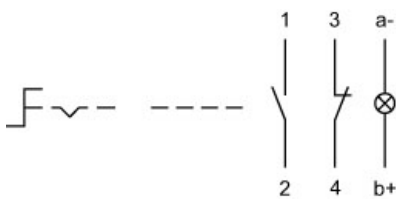


H = Universal terminal 2.0 x 0.5 mm

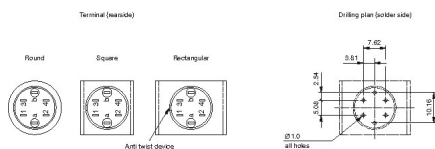
### Mounting cut-outs



### Wiring diagram



### Component layout



### Additional information

illuminative

### Legend

Contacts: NC = Normally closed, NO = Normally open  
Switching action: A = Rest, B = Momentary

# EAO – Your Expert Partner for Human Machine Interfaces

52-433.036 - Selector switch actuator 2 positions square, flush design

## Switching positions

