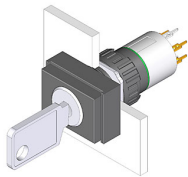


EAO – Your Expert Partner for Human Machine Interfaces

51-427.036D - Keylock switch 2 positions

51-427.036D - Keylock switch 2 positions



Attention: The preview is based on a sample product. This can differ from your current configuration.

Mounting

Mounting cut-out Ø 16 mm
Design raised

Front

Front dimension 18 mm x 24 mm
Front shape rectangular

Other Attributes

Weight 0,017 kg

Operating-/Indication part

Switching angle 42° right

IP-Rating

Front protection IP65

Connection Method

Terminal Universal 2.0 x 0.5 mm

Actuator

Switching action Rest(a) - Momentary

Switching element

Rotary positions 2
Switching system Low-level element
Switching voltage 42 V AC/DC
Switching current 0.1 A
Contacts 2 NO
Contact material

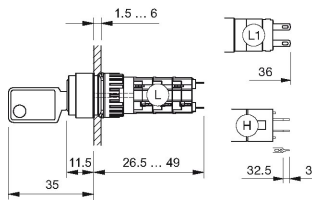
Function

Keylock switch

EAO – Your Expert Partner for Human Machine Interfaces

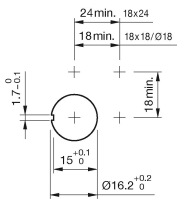
51-427.036D - Keylock switch 2 positions

Dimensions



H = Universal terminal 2.0 x 0.5 mm

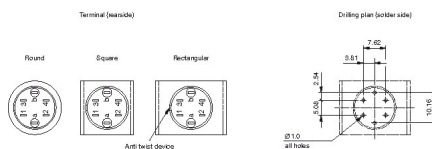
Mounting cut-outs



Wiring diagram



Component layout



Additional information

Standard lock: DOM 311

Two keys are supplied with each key lock switch

Optional lock numbers on request

Legend

Contacts: NO = Normally open

Switching action: A = Rest, B = Momentary

EAO – Your Expert Partner for Human Machine Interfaces

51-427.036D - Keylock switch 2 positions

Switching positions

