

## WindO/I-NV2

### OI Touchscreen Programming Software



Easy programming with intuitive drag and drop functionality

#### Part Number

| Part Number | Description  |
|-------------|--|
| HG9Y-ZSS2W  | WindO/I-NV2 configuration software for all OI Touchscreens |

#### Configuration Tool Is Effortless

WindO/I-NV2 software is the simplest programming tool for all IDEC OI Touchscreens. The objects are extremely easy to configure with the help of step-by-step navigation. It lets you quickly create colorful graphical screens in no time using drop-down menus and intuitive drag and drop functionality for the objects. A workspace is available to help you organize and manage projects, objects and screens.

#### Built-in Key Features:

- Includes serial and network protocols. This will allow IDEC Touchscreens to locally or remotely communicate with IDEC or other major brand PLC manufacturers.
- Has a built-in library of bitmaps with over 5,000 images to help you create colorful graphical interfaces.
- Security Function – provide different levels of security and restrictions for projects, screens and objects.
- Script Function – Users with basic programming knowledge can create simple and complex processes.

#### Online Capability:

Whether your PC is locally or remotely connected (via Ethernet) to a Touchscreen, WindO/I-NV2 has a Debug function which conveniently allows you to go online with the touchscreen for monitoring or changing data. In addition, this software also gives you the option to select the Pass-Thru function which allows the PLC program to be downloaded from a PC through the touchscreen. (Pass-Thru function option only for IDEC PLCs.)

#### Free Lifetime Upgrade:

WindO/I-NV2 is not only an easy configuration tool but it also is high quality software at an affordable price. After a one-time purchase, upgrades are absolutely free. Take advantage of the time and cost savings you will have when using this software.

Visit [www.idec.com/downloads](http://www.idec.com/downloads) for free upgrades or a free demo version.

**Easy Programming: Intuitive Drag & Drop Functionality**

The WindO/I-NV2 software for all OI Touchscreens is the programming tool that lets you create colorful graphical interfaces to visualize operating conditions. IDEC HG1F touchscreens are programmable with version 3.12 or higher and allow a selection of vertical or horizontal screen orientation. The software is very intuitive with drag and drop functionality. The Help menus are a great source of information and a built-in library of bitmaps provides over 5000 images to help expand your creativity. The software also includes a debug function where you can go online with the touchscreen for monitoring and changing data.

**Flexible Screen Display for Efficient Editing**

With WindO/I-NV2 software, screens can be easily arranged. A total of 3000 base screens can be created (as allowed by the memory size). Sub-screens known as pop-up menus can be resized, made (showing backgrounds) using the superimpose function, and can be made to appear anywhere inside the base screen.

**Easy to manage Projects and Screens**

**Screens and Project Settings List:**

- Screens can be duplicated and their properties can be changed easily.
- Project settings can be edited.
- Devices, text, and images can be imported or exported.

**Screen Preview List:**

- Screens can easily be selected using the preview image function.

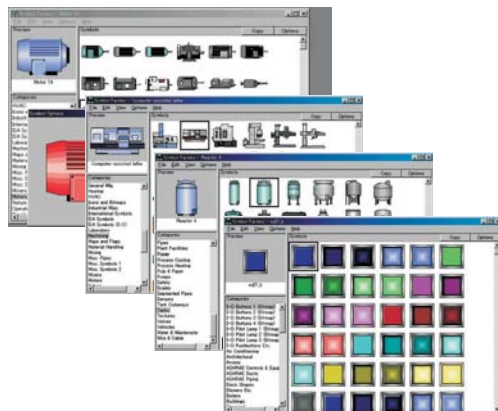
**Object List:**

- Each object displays its properties such as; type of device used, conditions and operations.

**Buttons:**

- A button selected from an object list is shown on the editing screen.

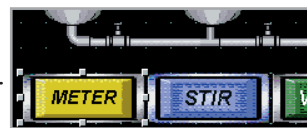
**Extensive Image Library**



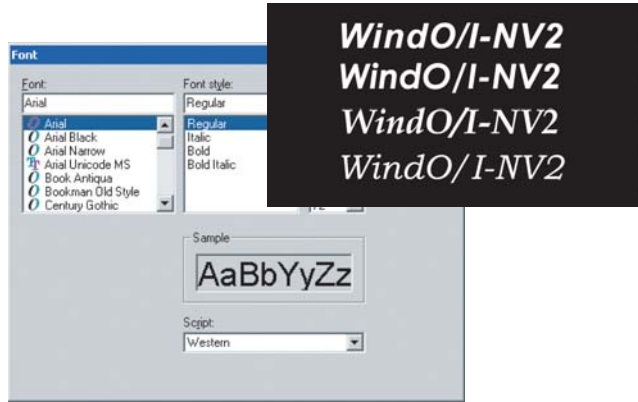
A built-in symbol library provides over 5000 symbols to help you create cutting-edge graphical screens. Image data from BMP, JPG, DXF, WMF, and ICO files can also be imported.



| No. | Name          | Type        | Device | Trigger Type        | Trigger Condition |
|-----|---------------|-------------|--------|---------------------|-------------------|
| 55  | Rectangle     | Rectangle   |        |                     |                   |
| 56  | Bitmap        | Bitmap      |        |                     |                   |
| 57  | Rectangle     | Rectangle   |        |                     |                   |
| 58  | Rectangle     | Rectangle   |        |                     |                   |
| 59  | Line          | Line        |        |                     |                   |
| 60  | WordCommand13 | Word Write  | LDR 70 | 1: Falling-edge     | [LSM 2]           |
| 61  | WordCommand10 | Word Write  | LDR 67 | 2: Satisfy the c... | [D 6] == 5 & 3    |
| 62  | BarGraph4     | Bar Graph   | LDR 71 |                     |                   |
| 63  | BarGraph5     | Bar Graph   | LDR 72 |                     |                   |
| 64  | BarGraph6     | Bar Graph   | LDR 75 |                     |                   |
| 65  | NumDisplay1   | Numerical   | LDR 71 |                     |                   |
| 66  | NumDisplay2   | Numerical   | LDR 73 |                     |                   |
| 67  | NumDisplay3   | Numerical   | LDR 67 |                     |                   |
| 68  | NumDisplay1   | Numerical   | LDR 75 |                     |                   |
| 69  | BitSwitch3    | Bit Button  | LM 10  | 3: Always ON        |                   |
| 70  | BitSwitch4    | Bit Button  | LM 10  | 3: Always ON        |                   |
| 71  | BitSwitch5    | Bit Button  | LM 1   | 3: Always ON        |                   |
| 72  | BitSwitch6    | Bit Button  | LM 2   | 3: Always ON        |                   |
| 73  | Lamp2         | Pilot Lamp  | LX 0   | 6: While satisfy    | [D 150] >= [D     |
| 74  | BitSwitch7    | Bit Button  | LM 3   | 3: Always ON        |                   |
| 75  | ScreenSwitch1 | Osfo Screen | 10     | 3: Always ON        |                   |
| 76  | WordCommand1  | Word Write  | LDR 71 | 6: While satisfy    | 0 == [LDR 71]     |
| 77  | WordCommand65 | Word Write  | LDR 72 | 0: Rising-edge      | [LSD 11-0]        |
| 78  | WordCommand55 | Word Write  | LDR 73 | 6: While satisfy    | 20 >= [LDR 73]    |
| 79  | WordCommand11 | Word Write  | LDR 68 | 2: Satisfy the c... | 100 == [LDR 68]   |
| 80  | NumDisplay2   | Numerical   | LDR 72 |                     |                   |
| 81  | NumDisplay2   | Numerical   | LDR 72 |                     |                   |
| 82  | NumDisplay2   | Numerical   | LDR 73 |                     |                   |
| 83  | BarGraph1     | Bar Graph   | LDR 58 |                     |                   |
| 84  | BarGraph1     | Bar Graph   | LDR 58 |                     |                   |
| 85  | NumDisplay3   | Numerical   | LDR 67 |                     |                   |
| 86  | NumDisplay2   | Numerical   | LDR 67 |                     |                   |

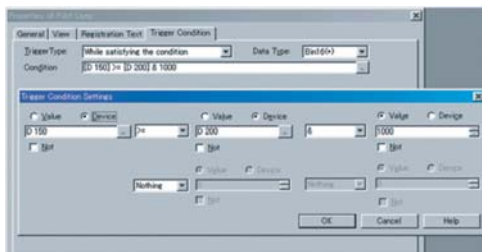


**Compatible with Standard Windows™ Fonts**



Fonts used in Windows™ can be used on the OI Touchscreens, making it possible to choose from a variety of text styles.

**Easy Programming of Operating Conditions**



Operating conditions for objects such as switches, lamps, bit/word write, screen switching, and many more are easy to use. Step by step wizards guide the user through the set-up process.

**Create Recipes to set parameters for different processes**

- Upload or download parameters to and from the PLC
- 1,024 available channels; store up to 8,000 parameters per channel

**Set up Alarm Log function for messages and alerts**

- Monitors alarm conditions from a PLC and stores historical events with a date and time stamp
- Meets ISA standards for visual alarm management
- Select size and contrast of alarm message and status
- Scroll a list of alarm messages

**Create Trend Graphs to monitor critical data points**

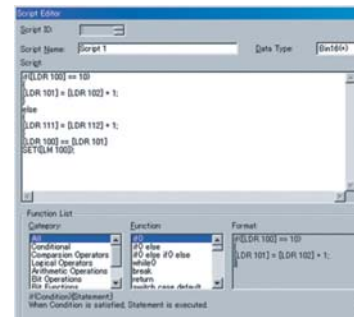
- Quickly view production information
- Collect and manage data
- Up to 16 channels in a graph

**Multilingual Capabilities for Worldwide Applications**



- The OI Touchscreen family can support other languages. With the text group function you can create a text database in different languages. Once the touchscreen is in a different country(e.g. China or Mexico) the customer can easily switch all text messages from English to Chinese or Spanish by a touch of a button.
- Windows 2000, Vista and XP make it possible to input Japanese, Simplified Chinese, Traditional Chinese, and Korean languages, Western European languages (English, German, French, Italian, Spanish, Dutch, Norwegian, Danish, Finnish, Swedish, etc.) Central European languages (Czech, Hungarian, Romanian, Croatian, Slovene, Polish, and Slavic), Baltic languages, Cyrillic languages (Russian, Ukrainian, Bulgarian, Macedonian).

**Script function**



- Users with programming knowledge in C can combine conditional statements, mathematical operations and other functions to create simple and complex processes.
- Greatly reduce the programming required in the PLC.
- A syntax check function is also available to provide easy program trouble-shooting.

**Security function**

- Provides different levels of security and restrictions for multiple users on editing projects or displaying screens and objects.

PLCs

Operator Interfaces

Automation Software

Power Supplies

Sensors

Communication & Networking