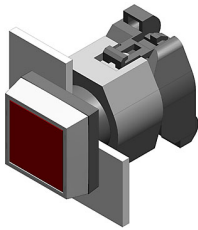


EAO – Your Expert Partner for Human Machine Interfaces

704.202.4 - Indicator actuator front illumination

704.202.4 - Indicator actuator front illumination



Attention: The preview is based on a sample product. This can differ from your current configuration.

Mounting

Mounting cut-out Ø 22,3 mm
Design raised

Front

Front dimension 30 mm x 30 mm
Front shape square
Front bezel material Plastic
Front bezel colour grey

Other Attributes

Weight 0,050 kg
Marking plate colour white
Marking plate optics translucent
Marking plate illumination illuminative

Operating-/Indication part

Lens optics transparent
Lens material Plastic
Lens colour yellow
Lens profile flat

IP-Rating

Front protection IP65

Connection Method

Terminal Screw terminal

Actuator

Housing material Plastic
Housing colour black

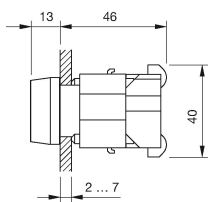
Function

Indicator

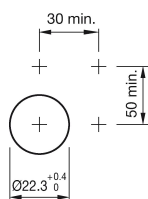
EAO – Your Expert Partner for Human Machine Interfaces

704.202.4 - Indicator actuator front illumination

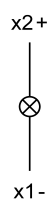
Dimensions



Mounting cut-outs



Wiring diagram



Additional information

Filament lamp or LED