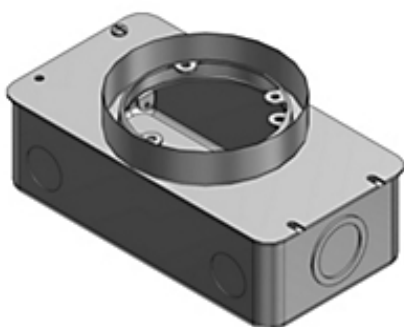




Actual



Representative



Line Art

Catalog Number: 663-SC
Product ID: 7TAA003090R0000
UPC Number: 78599161880
EAN Number: 05415022443448
Status: Active

Two Gang Recessed Service Floor Box, 90 Cubic Inches, Length 8-13/16 Inches, Width 4-11/16 Inches, Depth 3-5/8 Inches, 3/4 Inch and 1-1/4 Inch Knockouts, Galvanized Steel, Wiring Device Duplex and or Data/Voice

- Electro-galvanized body and hardware
- Shipped complete with expendable cap to prevent ingress of concrete.
- Blank and duplex face plates can be mounted at either end of the box.
- No exposed fittings

North American Specifications (UNSPSC)

UNSPSC	39121307 Floor boxes
IGCC	4432 Floor boxes
Brand Name	Steel City
Type	Recessed Service
Special Features	Stamped steel, concrete tight, semi-adjustable
Application	Ideal for workstations that require power, communications and data service
Standard	UL E2969
Material	Stamped Steel
Cubic Capacity	90 Cubic Inches
Knockouts	6

European Specifications (ETIM)

ETIM	EC000024 Installation box for underfloor-installation
Cover model	Rectangular
Suitable for wet cleaning	N
Suitable for hollow floor	Y
Material	Other
With opening carpeting	N
Min. built-in depth	92.075mm
Colour	Other
Length external dimension	223.8248mm
Width outside dimension	119.0498mm

Packaging

Outer Quantity	4
Outer Dimensions (inches)	15.6x11x6
Weight Uom	259.5 lbs. per 100

Documents / Support Tools

Technical Drawing / Data Sheet US	Available on Website
Technical Drawing / Data Sheet Canada	Available on Website
Support/Tools	Available on Website

For further technical assistance, please contact us...

Thomas & Betts - USA
 8155 T&B Blvd.
 Memphis, TN 38125
 www.tnb.com

T&B Technical Support
 MS 3B-50
 8155 T&B Blvd.
 Memphis, TN 38125

Hours: 7AM - 6PM CDT
 Monday-Friday
 Phone: (888) 862-3289
 Fax: (901) 252-1321
 Email: techsupport@tnb.com