

# EAO – Your Expert Partner for Human Machine Interfaces

01-050.005 - Indicator actuator

## 01-050.005 - Indicator actuator



*Attention: The preview is based on a sample product. This can differ from your current configuration.*

### Mounting

Mounting cut-out  
Design

Ø 16 mm  
raised

### Front

Front dimension  
Front shape

18 mm x 18 mm  
square

### Other Attributes

Weight

0,006 kg

### IP-Rating

Front protection

IP40

### Connection Method

Terminal

Solder

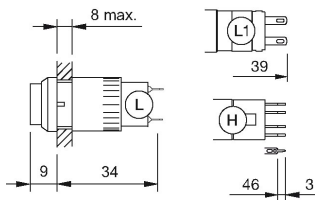
### Function

Indicator

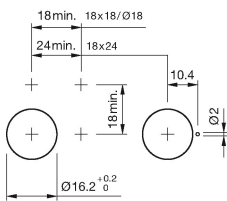
# EAO – Your Expert Partner for Human Machine Interfaces

01-050.005 - Indicator actuator

## Dimensions



## Mounting cut-outs



## Wiring diagram

