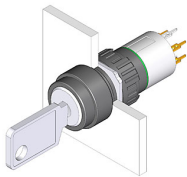


EAO – Your Expert Partner for Human Machine Interfaces

51-414.036D - Keylock switch 2 positions

51-414.036D - Keylock switch 2 positions



Attention: The preview is based on a sample product. This can differ from your current configuration.

Mounting

Mounting cut-out
Design \varnothing 16 mm
raised

Front

Front dimension
Front shape \varnothing 18 mm
round

Other Attributes

Weight 0,017 kg

Operating-/Indication part

Switching angle 90° right

IP-Rating

Front protection IP65

Connection Method

Terminal Universal 2.0 x 0.5 mm

Actuator

Switching action Rest(a) - Maintain

Switching element

Rotary positions 2
Switching system Low-level element
Switching voltage 42 V AC/DC
Switching current 0.1 A
Contacts 2 NO
Contact material

Function

Keylock switch

EAO – Your Expert Partner for Human Machine Interfaces

51-414.036D - Keylock switch 2 positions

Switching positions

