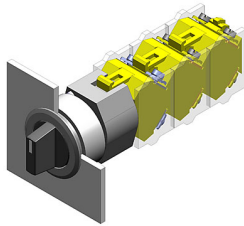


EAO – Your Expert Partner for Human Machine Interfaces

704.405.018 - Selector switch actuator 3 positions, short lever

704.405.018 - Selector switch actuator 3 positions, short lever



Attention: The preview is based on a sample product. This can differ from your current configuration.

Mounting

Mounting cut-out Ø 30,5 mm
Design flush

Front

Front dimension Ø 35 mm
Front shape round
Front bezel colour natural anodized
Front bezel material Aluminium

Other Attributes

Weight 0,056 kg

Operating-/Indication part

Lever material Plastic
Lever colour black
Switching angle
Lever illumination non-illuminative
Lever shape short

IP-Rating

Front protection IP65

Actuator

Switching action Momentary - Rest - Momentary

Switching element

Rotary positions 3
max. number of switching elements 3

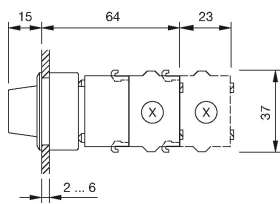
Function

Selector switch

EAO – Your Expert Partner for Human Machine Interfaces

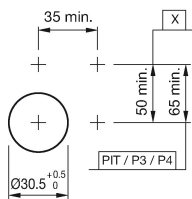
704.405.018 - Selector switch actuator 3 positions, short lever

Dimensions



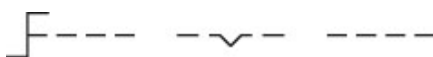
X = Screw terminal

Mounting cut-outs

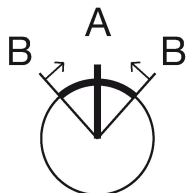


PIT = Push-in terminal

Wiring diagram



Switching positions



Additional information

Max. 3 switching elements can be clipped on
The colour of anodized aluminium parts can vary due to technical production reasons

Legend

Switching action: A = Rest, B = Momentary