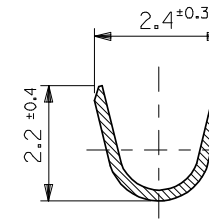
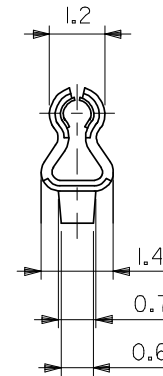
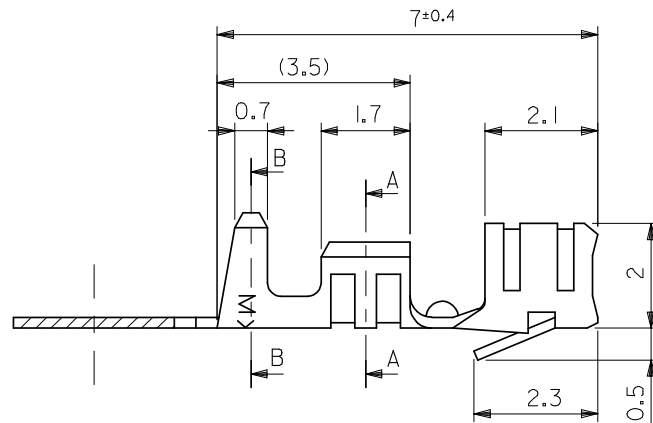


断面 A-A
SECT. A-A

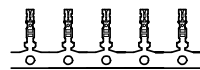
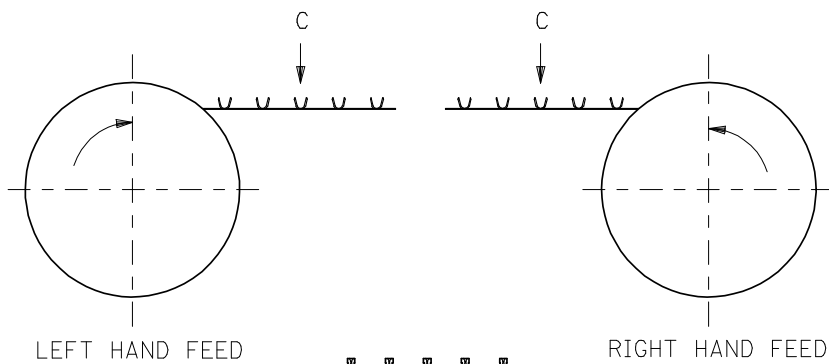


断面 B-B
SECT. B-B



注記
NOTE

- 材質: リン青銅 (t=0.203)
MATERIAL: PHOSPHOR BRONZE
- メッキ: ニッケル下地錫メッキ
FINISH: TIN PLATING UNDER NICKEL PLATING
- 使用ハウジング: 5264シリーズ
SUITABLE HOUSING: 5264 SERIES
- 適用電線範囲: AWG#22~28 (0.33 ~ 0.08mm²)
WIRE RANGE: AWG #22-28(0.33 - 0.08mm²)
- 被覆外形: φ1.15 ~ φ1.9
INSULATION RANGE: φ 1.15 - φ1.9



VIEW C

LEFT HAND	08-70-1046	5263PBTPL	バラ状 LOOSE
	08-70-1045	5263PBTP	連鎖状 CHAIN
FEED TYPE	EDP NO.	ENG. NO.	端子形状 FORM

REVISED EC NO: J2008-4450 DRWN: NABEI CHK: KTOYODA APPR: NUKITA	DESCRIPTION 2008/07/01 2008/07/02 2008/07/02	GENERAL TOLERANCES (UNLESS SPECIFIED)		DIMENSION STYLE	SCALE	DESIGN UNITS	MODEL NO.	
				MM ONLY	10:1	METRIC	THIRD ANGLE PROJECTION	
		10 UNDER	±0.2	DRAWN BY	DATE	TITLE		
		10 OVER 30 UNDER	±0.25	K. TOJO	'91/11/05	2.5 LOW PROFILE CRIMP RECEPTACLE		
		30 OVER	±0.3	M. FUKUSHIMA	'91/11/11	MOLEX INCORPORATED		
ANGULAR ±3 °		APPROVED BY		DATE	DOCUMENT NO.		SHEET NO.	
DRAFT WHERE APPLICABLE MUST REMAIN WITHIN DIMENSIONS		M. ENOMOTO		'91/11/11	SD-5263-002		1 OF 1	
		SEE TABLE		THIS DRAWING CONTAINS INFORMATION THAT IS PROPRIETARY TO MOLEX INCORPORATED AND SHOULD NOT BE USED WITHOUT WRITTEN PERMISSION				