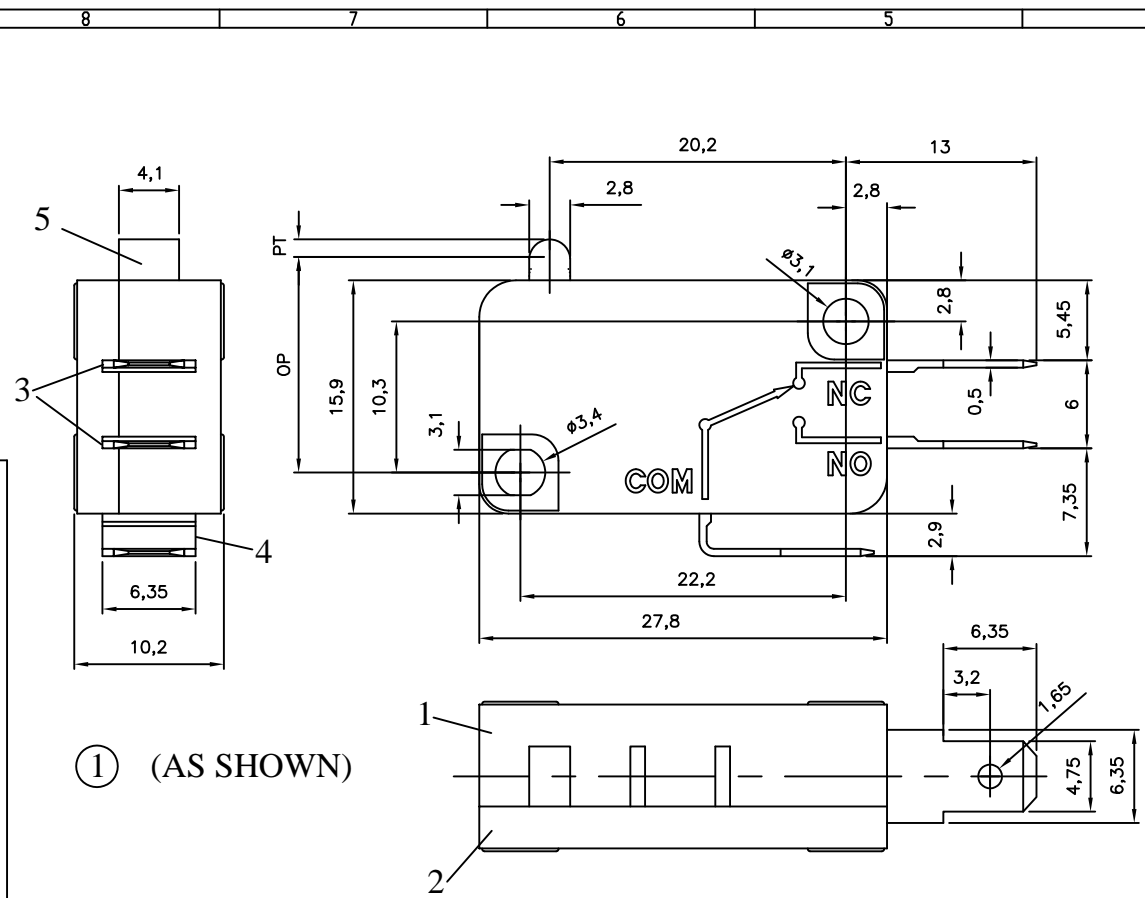
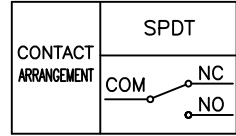
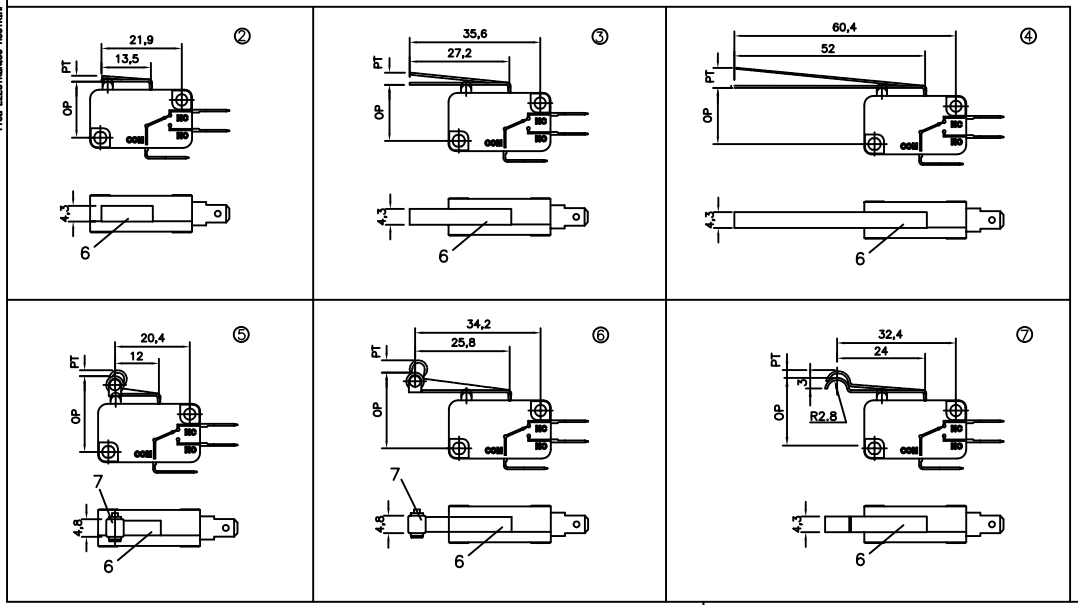


THIS INFORMATION IS CONFIDENTIAL AND PROPRIETARY TO TYCO ELECTRONICS AUSTRALIA (Pty) LTD AND ITS AFFILIATES. IT MAY NOT BE DISCLOSED TO ANYONE OTHER THAN TYCO ELECTRONICS AUSTRALIA (Pty) LTD.



① (AS SHOWN)



- NOTES:
- FOR TECHNICAL DATA REFER TO YOUR LOCAL TYCO ELECTRONICS SALES OFFICE.
 - ALL DIMENSIONS ARE NOMINAL. FOR REFERENCE ONLY UNLESS OTHERWISE STATED.
 - ALL DIMENSIONS ARE COMMON TO THE MAIN BODY. VARIATIONS ARE IN THE OPERATING LEVERS.
 - OP: OPERATING POSITION
FP: FREE POSITION
 - REFER PAGE 2 FOR MATERIAL INFORMATION AND SPECIFICATION DATA
 - REFER DRAWING 1988618 AND 1988619 FOR MARKING INFORMATION

Base	TE SALES PN	TE PN	DESCRIPTION
0,1A 100g	MP01DTASMD	1-1478670-7	Simu Roller ⑦
	MP01DTANRD	1-1478670-6	Norm Roller ⑥
	MP01DTASRD	1-1478670-5	Short Roller ⑤
	MP01DTALLD	1-1478670-4	Long Lever ④
	MP01DTANLD	1-1478670-3	Norm Lever ③
	MP01DTASLD	1-1478670-2	Short Lever ②
	MP01DTAOLD	1-1478670-1	Pin Plunger ①
16A 350g	MP16DTASMK	1-1478605-7	Simu Roller ⑦
	MP16DTANRK	1-1478605-6	Norm Roller ⑥
	MP16DTASRK	1-1478605-5	Short Roller ⑤
	MP16DTALLK	1-1478605-4	Long Lever ④
	MP16DTANLK	1-1478605-3	Norm Lever ③
	MP16DTASLK	1-1478605-2	Short Lever ②
	MP16DTAOLK	1-1478605-1	Pin Plunger ①
16A 200g	MP16DTASMG	1-1478604-7	Simu Roller ⑦
	MP16DTANRG	1-1478604-6	Norm Roller ⑥
	MP16DTASRG	1-1478604-5	Short Roller ⑤
	MP16DTALLG	1-1478604-4	Long Lever ④
	MP16DTANLG	1-1478604-3	Norm Lever ③
	MP16DTASLG	1-1478604-2	Short Lever ②
	MP16DTAOLG	1-1478604-1	Pin Plunger ①
16A 160g	MP16DTASME	1-1478603-7	Simu Roller ⑦
	MP16DTANRE	1-1478603-6	Norm Roller ⑥
	MP16DTASRE	1-1478603-5	Short Roller ⑤
	MP16DTALLE	1-1478603-4	Long Lever ④
	MP16DTANLE	1-1478603-3	Norm Lever ③
	MP16DTASLE	1-1478603-2	Short Lever ②
	MP16DTAOLE	1-1478603-1	Pin Plunger ①

PART NO:	PART NAME:	MATERIAL/SURFACE:	OPTIONAL DESCRIPTION
PART LIST			
test dimen / Prüfmaß		DIMENSIONS: mm	
production control dimen / Fertigungs-kontr.maß		[] dimen. for res2, technology / nesstechn. rel. Maß []	
DEPARTMENT	DATE	RSF	
DRAWER	10-01-08	SA008712	
CHECKED			
J	21-04-09	VEIH	TOLERANCES SPECIFIED
ECR-NO:	DATE	NAME	INFO
APPROVED	DATE	NAME	

TOLERANCES UNLESS OTHERWISE SPECIFIED

.x +/-0,5mm
 .xx +/-0,2mm
 .xxx +/-0,1mm

SCALE: NAME: MICRO SWITCH DT SOLDER TERMINAL

DWG NO: 1968580

OPTIONAL NO:

REPLACEMENT FOR: DWG LDC NO: IF SHEET: 1 OF 2 REVISION: J A 2

THIS DRAWING IS A CONTROLLED DOCUMENT, HANDWRITTEN CHANGES ARE NOT ALLOWED

SPECIFICATION DATA		
Amp Rating	16	0,1
Insulation Resistance	min. 100 Mohm	
Contact Resistance	max 50 m ohm	
Dielectric Strength	AC 1.000V60sec	
Operating Speed	0,2mm/sec - 1,000mm/sec	1mm/sec - 500mm/sec
Max allowed Mechanical Open/Close Frequencies	300 Cycles/min	
Shock Resistance (Without Lever)	300mm/sec ²	
Vibration Resistance (Without Lever)	1.5mm 10-55 Hz (2Hr)	
Electrical Life	50.000 cycles @16A 250VAC resistive load	10.000 cycles @0,1A 250VAC resistive load
Mechanical Life	1.000.000 cycles	
Safety Approval	UL / CUL / ENEC	UL / CUL
Operating Temperature Range	-25°C to +130°C RH85% Max	

TYCO PN	CHARACTERISTICS					
	Operating Force	Releasing Force	Pre Travel	Operating Position	Over Travel	Movement Differential
	max	min	max		min	max
1-1478603-1	160 ± 30 g	50 g	1,2 mm	14,7 ± 0,5 mm	1,25mm	0,4 mm
1-1478603-2	160 ± 45 g	50 g	1,6 mm	15,3 ± 0,5 mm	1,50 mm	0,5 mm
1-1478603-3	75 ± 20 g	30 g	3,3 mm	15,3 ± 1,5 mm	2,5 mm	1,2 mm
1-1478603-4	40 ± 15 g	15 g	6,2 mm	15,3 ± 2,0 mm	4,4 mm	2,2 mm
1-1478603-5	160 ± 40 g	50 g	1,6 mm	20,7 ± 2,0 mm	1,5 mm	0,5 mm
1-1478603-6	60 ± 15 g	25 g	3,7 mm	20,7 ± 1,5 mm	3,3 mm	1,3 mm
1-1478603-7	85 ± 20 g	30 g	2,8 mm	18,7 ± 1,5 mm	2,4 mm	1,1 mm
1-1478604-1	200 ± 40 g	55 g	1,2 mm	14,7 ± 0,5 mm	1,25mm	0,4 mm
1-1478604-2	200 ± 45 g	55 g	1,6 mm	15,3 ± 0,5 mm	1,50 mm	0,5 mm
1-1478604-3	95 ± 20 g	40 g	3,3 mm	15,3 ± 1,5 mm	2,5 mm	1,2 mm
1-1478604-4	50 ± 15 g	20 g	6,2 mm	15,3 ± 2,0 mm	4,4 mm	2,2 mm
1-1478604-5	200 ± 45 g	55 g	1,6 mm	20,7 ± 2,0 mm	1,5 mm	0,5 mm
1-1478604-6	75 ± 20 g	30 g	3,7 mm	20,7 ± 1,5 mm	3,3 mm	1,3 mm
1-1478604-7	105 ± 20 g	40 g	2,8 mm	18,7 ± 1,5 mm	2,4 mm	1,1 mm
1-1478605-1	350 ± 40 g	80 g	1,2 mm	14,7 ± 0,5 mm	1,25mm	0,4 mm
1-1478605-2	350 ± 50 g	80 g	1,6 mm	15,3 ± 0,5 mm	1,50 mm	0,5 mm
1-1478605-3	170 ± 30 g	50 g	3,3 mm	15,3 ± 1,5 mm	2,5 mm	1,2 mm
1-1478605-4	85 ± 20 g	30 g	6,2 mm	15,3 ± 2,0 mm	4,4 mm	2,2 mm
1-1478605-5	350 ± 50 g	80 g	1,6 mm	20,7 ± 2,0 mm	1,5 mm	0,5 mm
1-1478605-6	140 ± 30 g	45 g	3,7 mm	20,7 ± 1,5 mm	3,3 mm	1,3 mm
1-1478605-7	180 ± 30 g	50 g	2,8 mm	18,7 ± 1,5 mm	2,4 mm	1,1 mm
1-1478670-1	100 ± 25 g	20 g	1,2 mm	14,7 ± 0,5 mm	1,25mm	0,4 mm
1-1478670-2	100 ± 30 g	20 g	1,6 mm	15,3 ± 0,5 mm	1,50 mm	0,5 mm
1-1478670-3	50 ± 15 g	15 g	3,3 mm	15,3 ± 1,5 mm	2,5 mm	1,2 mm
1-1478670-4	25 ± 10 g	8 g	6,2 mm	15,3 ± 2,0 mm	4,4 mm	2,2 mm
1-1478670-5	100 ± 30 g	20 g	1,6 mm	20,7 ± 2,0 mm	1,5 mm	0,5 mm
1-1478670-6	40 ± 15 g	10 g	3,7 mm	20,7 ± 1,5 mm	3,3 mm	1,3 mm
1-1478670-7	55 ± 15 g	15 g	2,8 mm	18,7 ± 1,5 mm	2,4 mm	1,1 mm

MAJOR COMPONENT & MATERIAL LIST 16A Type				
NO	PART NAME	MATERIAL	UL FRAME	FINISH (COLOR)
1	Box	P.B.T. Resin	94 V-0	grey
2	Cover			
3	Contact	Ag alloy / Cu		
	Terminal	Brass Sheet (t=0,8)		Silver Plating
4	Contact	Ag alloy		
	Spring Plate	Beryllium Copper		
5	Terminal	Brass Sheet (t=0,8)		Silver Plating
	Button	P.B.T. Resin	94 V-0	black
6	Lever	Stainless Steel		
7	Roller	Stainless Steel		

MAJOR COMPONENT & MATERIAL LIST 0,1A Type				
NO	PART NAME	MATERIAL	UL FRAME	FINISH (COLOR)
1	Box	PET Resin	94 V-0	grey
2	Cover			
3	Contact	Ag alloy / Cu		
	Terminal	Brass Sheet (t=0,8)		Silver Plating
4	Contact	Ag alloy		
	Spring Plate	Beryllium Copper		
5	Terminal	Brass Sheet (t=0,8)		Silver Plating
	Button	PPS Resin	94 V-0	black
6	Lever	Stainless Steel		
7	Roller	Stainless Steel		

PART NO:	PART NAME:	MATERIAL/SURFACE:	OPTIONAL DESCRIPTION:
PART LIST		DIMENSIONS: mm	
test dimen. / Prüfmaß () ; auxiliary dimen. / Hilfsmaß () ; theor. dimen. / theor. Maß () ; production control dimen. / Fertigungskontrollmaß () ; dimen. for measure. technology / messtechn. rel. Maß () []			
DEPARTMENT	DLE / RSF	SA008712	
DRAWER	27-9-06	SA008712	
CHECKED			
J	21-04-09	VEIH	TOLERANCES SPECIFIED
ECR-NO:	DATE	NAME	INFO
APPROVED	DATE	NAME	
SCALE:	NAME:	DWG NO:	OPTIONAL NO:
	MICRO SWITCH DT	1968580	
	SOLDER TERMINAL		
REPLACEMENT FOR:	DWG LOC NO: IF	SHEET: 2 OF 2	REVISION: J

TOLERANCES UNLESS OTHERWISE SPECIFIED

.x +/-0,5mm
.xx +/-0,2mm
.xxx +/-0,1mm

THIS INFORMATION IS CONFIDENTIAL AND PROPRIETARY TO TYCO ELECTRONICS AUSTRALIA GROUP AND ITS VARIOUS SUBSIDIARIES AND AFFILIATES. IT MAY NOT BE DISCLOSED TO ANYONE OTHER THAN TYCO ELECTRONICS PERSONNEL WITHOUT WRITTEN AUTHORIZATION FROM TYCO ELECTRONICS AUSTRALIA.