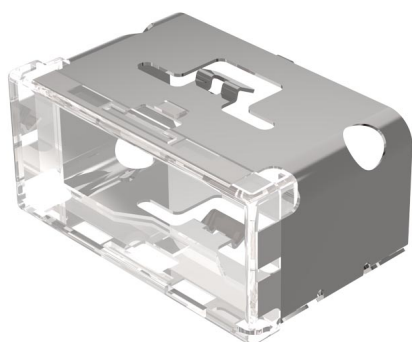


EAO – Your Expert Partner for Human Machine Interfaces

03-901.9 - Lens single-headed uni-colour for pushbutton single-headed

03-901.9 - Lens single-headed uni-colour for pushbutton single-headed



Attention: The preview is based on a sample product. This can differ from your current configuration.

Mounting

Design flush

Other Attributes

Weight 0,009 kg
Dimension 18 x 38 mm

Operating-/Indication part

Lens optics translucent
Lens material Plastic
Lens colour white ribbed
Lens illumination illuminative
Lens profile flat