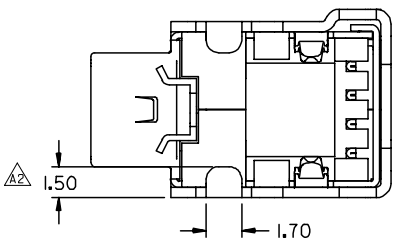
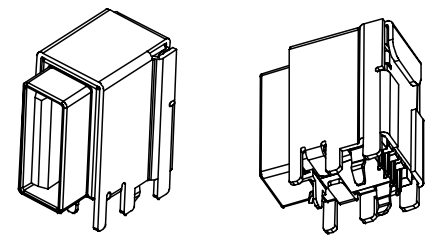
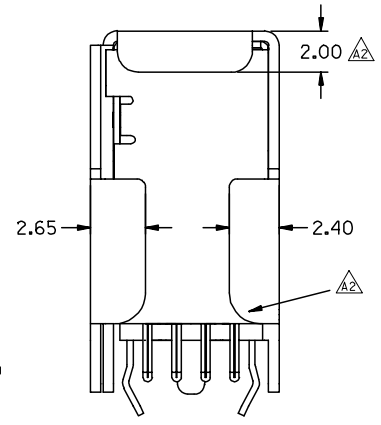
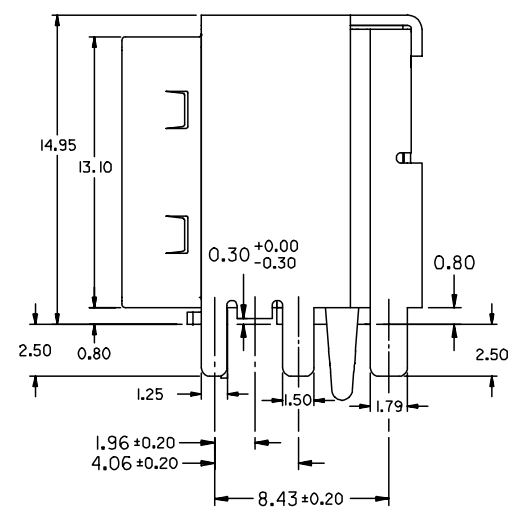
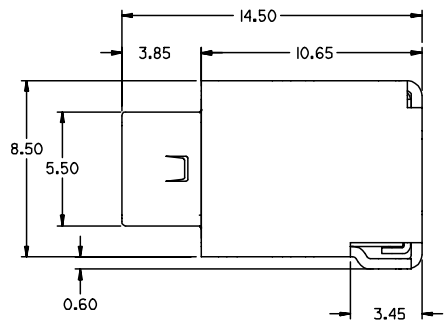
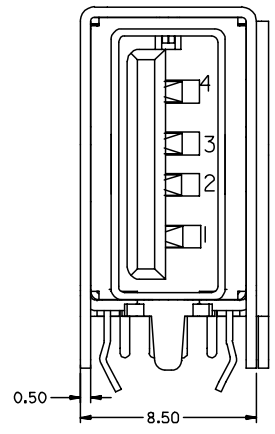
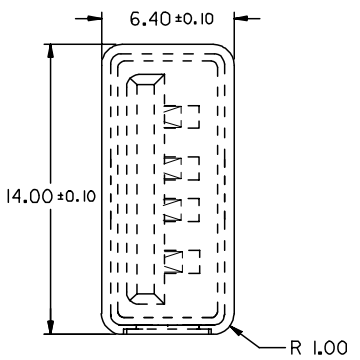


ENG. NO.	MATERIAL NO.	SUB-ASS'Y	PLATING SPECIFICATION	DIMENSION "A"
	67226-8000	89485-8000	GOLD FLASH	2.00 $+0.35$ -0.15
	67226-8001	89485-8001	30 MICRO INCH GOLD	
	67226-8002	89485-8002	GOLD FLASH	2.50 $+0.35$ -0.10
	67226-8003	89485-8003	30 MICRO INCH GOLD	

(SEE SHEET 2)

- NOTES :
- MATERIAL :
SUB ASSEMBLY : 89485 PLEASE REFER TO SHEET 2
REINFORCED COVER : STEEL , THICKNESS = 0.5mm
 - PLATING :
SUB ASSEMBLY : 89485 PLEASE REFER TO SHEET 2
REINFORCED COVER :
TIN (Sn) , THICKNESS= 100 MICROINCH MINIMUM.
UNDER PLATE : COPPER (Cu) , THICKNESS= 50 MICROINCH MINIMUM.
 - PRODUCT SPECIFICATION : REFER TO PS-67226-000
 - RECOMMENDED PCB LAYOUT : PLEASE REFER TO SHEET 3

Recommended Panel Opening



BOTTOM VIEW

LEAD-FREE	EC NO.	DRWN: DAVID HU 2004/11/1	CHK:	APPR:
	A			

QUALITY SYMBOLS	DESCRIPTION
MAJOR = 0	
CRITICAL = 0	

GENERAL TOLERANCES: (UNLESS SPECIFIED)	
4 PLACES	± .
3 PLACES	± .
2 PLACES	±0.25
1 PLACE	±0.25
ANGULAR: ±3°	
DRAFT WHERE APPLICABLE MUST REMAIN WITHIN DIMENSIONS	

SCALE	4 : 1
DESIGN UNITS	<input checked="" type="checkbox"/> mm <input type="checkbox"/> INCH
DRAWN BY & DATE	
DAVID HU 2004/11/1	
CHECKED BY & DATE	
APPROVED BY & DATE	
CAD FILENAME	S6722603.S01

THIRD ANGLE PROJECTION		DIMENSIONS: <input type="checkbox"/> mm <input type="checkbox"/> INCH <input checked="" type="checkbox"/> mm ONLY	
TITLE: USB UPRIGHT CONNECTOR WITH REINFORCED COVER (LEAD-FREE)		SHT	REV
MOLEX INCORPORATED		3	A
MATERIAL NO. SEE TABLE		2	A
DRAWING NO. SD-67226-003		1	A
SHEET NO. 1 OF 3		REVISE ON CAD ONLY	
THIS DRAWING CONTAINS INFORMATION THAT IS PROPRIETARY TO MOLEX INCORPORATED AND SHOULD NOT BE USED WITHOUT WRITTEN PERMISSION.			SIZE A3

DO NOT SCALE DRAWING

8 7 6 5 4 3 2 1

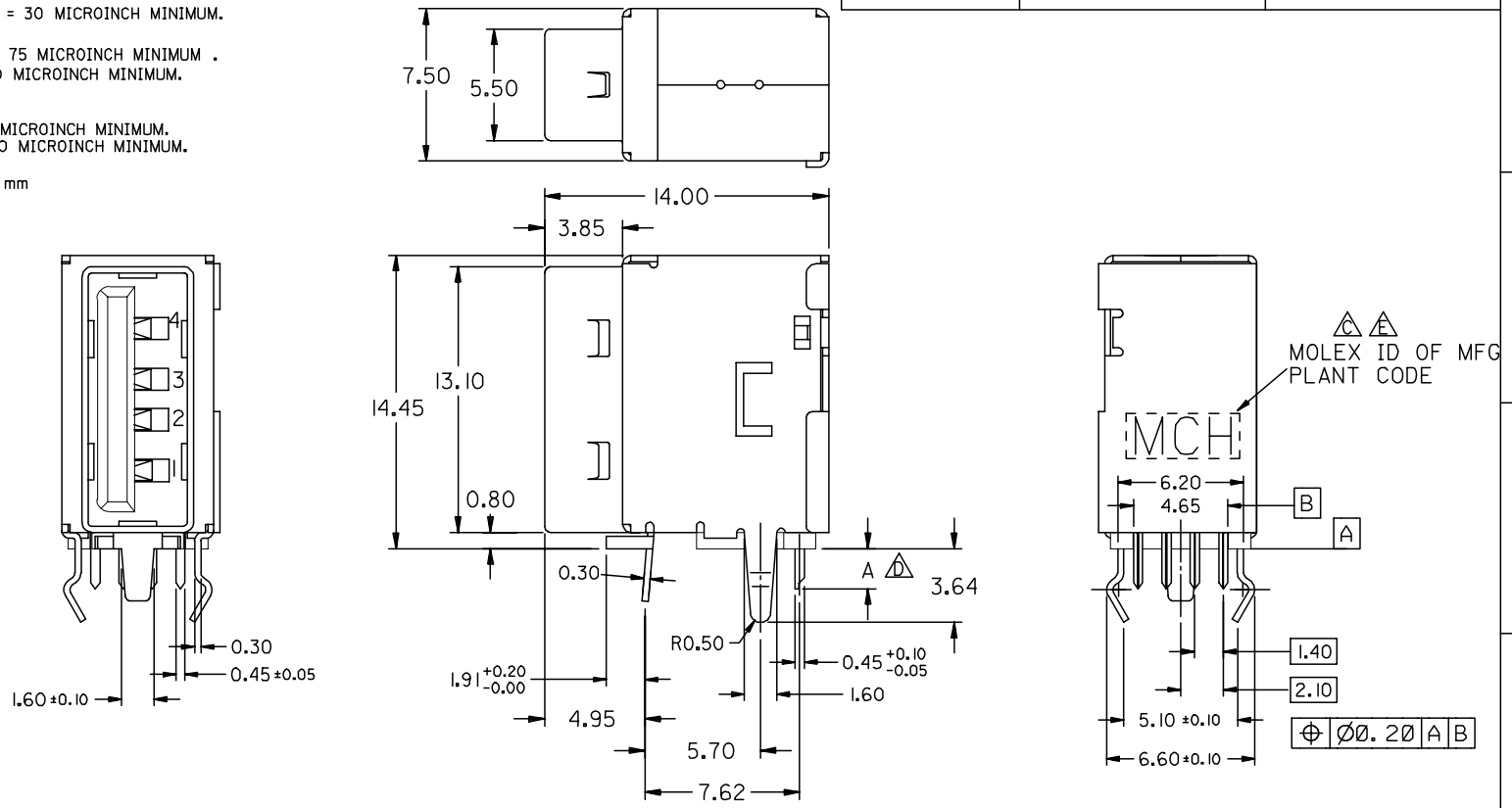
NOTES :

1. MATERIAL :
 HOUSING : HIGH TEMPERATURE NYLON , GLASS FIBRE FILLED, UL94-V0 , COLOR: BLACK
 TERMINAL : PHOSPHOR BRONZE
 METAL SHELL : DEEP DRAWN STEEL

2. PLATING :
 TERMINAL :
 CONTACT AREA : (a) GOLD FLASH.
 (b) GOLD (Au), THICKNESS = 30 MICROINCH MINIMUM.
 SOLDER TAIL : TIN(Sn)
 THICKNESS= 75 MICROINCH MINIMUM .
 UNDER PLATE : NICKEL (Ni), THICKNESS= 50 MICROINCH MINIMUM.
 METAL SHELL :
 TIN (Sn), THICKNESS= 100 MICROINCH MINIMUM.
 UNDER PLATE : NICKEL (Ni), THICKNESS= 50 MICROINCH MINIMUM.

3 RECOMMENDED PCB THICKNESS : 1.60±0.05 mm

SUB-ASS'Y P/N	PLATING SPEC.	DIMENSION "A"
89485-8000	GOLD FLASH	2.00 ^{+0.35} -0.15
89485-8001	30 MICRO INCH GOLD	
89485-8002	GOLD FLASH	2.50 ^{+0.35} -0.10
89485-8003	30 MICRO INCH GOLD	



ENG. NO
EDP NO.
SIMILAR ITEM
CADFILE NO.
DO NOT SCALE DRAWING

LEAD-FREE	EC NO. DAVID HU 2004/11/1	CHK: DAVID HU	APPR:	DESCRIPTION	QUALITY SYMBOLS MAJOR = 0 CRITICAL = 1	GENERAL TOLERANCES: (UNLESS SPECIFIED)		SCALE 4 : 1	DESIGN UNITS <input checked="" type="checkbox"/> mm <input type="checkbox"/> INCH	THIRD ANGLE PROJECTION	DIMENSIONS: <input type="checkbox"/> mm <input type="checkbox"/> INCH <input checked="" type="checkbox"/> mm ONLY		SHT	REV
						4 PLACES ± .	± .	DRAWN BY & DATE DAVID HU 2004/11/1	TITLE: USE UPRIGHT CONNECTOR WITH REINFORCED COVER (LEAD-FREE)	REVISE ON CAD ONLY				
						3 PLACES ± .	± .	CHECKED BY & DATE	MOLEX INCORPORATED					
						2 PLACES ± 0.25	± 0.10	APPROVED BY & DATE	CAD FILENAME S6722602.S02	MATERIAL NO. SEE SHEET 1	DRAWING NO. SD-67226-003	SHEET NO. 2	THIS DRAWING CONTAINS INFORMATION THAT IS PROPRIETARY TO MOLEX INCORPORATED AND SHOULD NOT BE USED WITHOUT WRITTEN PERMISSION.	
						1 PLACE ± 0.25	± 0.10	ANGULAR: ± 3°	DRAFT WHERE APPLICABLE MUST REMAIN WITHIN DIMENSIONS					
A				REV		THIS DRAWING CONTAINS INFORMATION THAT IS PROPRIETARY TO MOLEX INCORPORATED AND SHOULD NOT BE USED WITHOUT WRITTEN PERMISSION.						SIZE A3		

MATERIAL NO.	SUB-ASS'Y	GOLD PLATING	TIN PLATING	DIMENSION 'A'
67226-8000	89485-8000	GOLD FLASH	BRIGHT TIN	2.00 $+0.35$ -0.15
67226-8001	89485-8001	30 MICRO INCH GOLD		
67226-8002	89485-8002	GOLD FLASH		
67226-8003	89485-8003	30 MICRO INCH GOLD		2.50 $+0.35$ -0.10
67226-8012 ∇	89485-8012	GOLD FLASH	MATTE TIN	

(SEE SHEET 2)

NOTES:

1.MATERIAL:

SUB ASSEMBLY:89485 PLEASE REFER TO SHEET
REINFORCED COVER:STEEL,THICKNESS=0.5mm

2.PLATING:

SUB ASSEMBLY:89485 PLEASE REFER TO SHEET

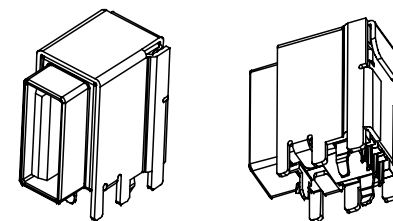
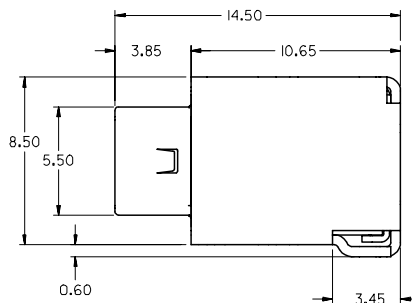
REINFORCED COVER:

(a)50MICROINCH MINIMUM BRIGHT TIN(Sn) ON REINFORCED COVER,ENDER 50 MICROINCH MINIMUM COPPER(Cu) PLATE.

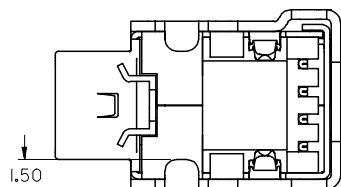
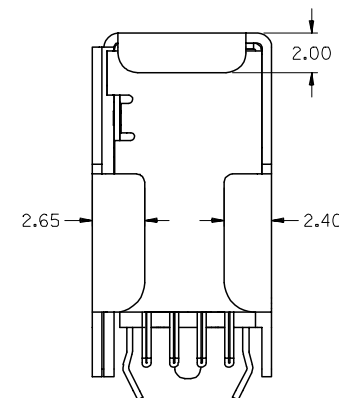
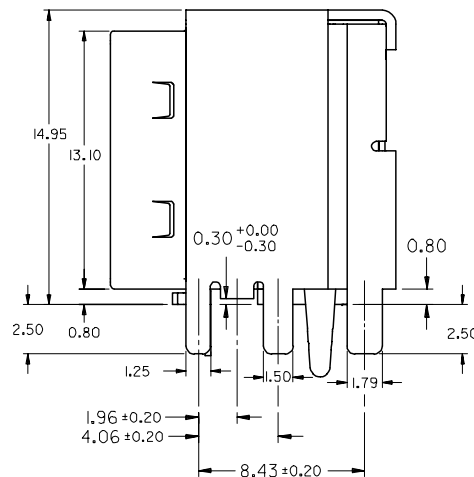
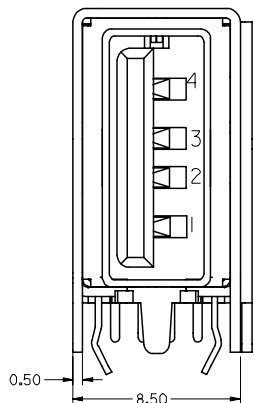
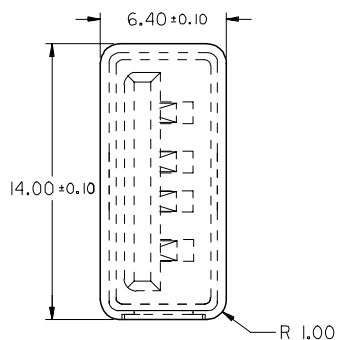
(b)50MICROINCH MINIMUM MATTE TIN(Sn) ON REINFORCED COVER,ENDER 50 MICROINCH MINIMUM COPPER(Cu) PLATE.

3.PRODUCT SPECIFICATION:REFER TO PS-67226-000

4.RECOMMENDED PCB LAYOUT:PLEASE REFER TO SHEET3



Recommended Panel Opening



BOTTOM VIEW

REVISED	EC NO: SH2007-0468	2007/01/19
	DRWN:HYE01	2007/01/19
	CHKD:WANG	2007/01/19
	APPR:JNCHEN	2007/01/26

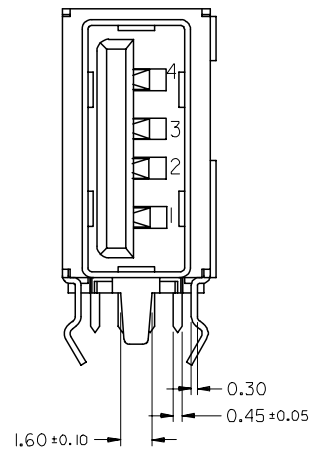
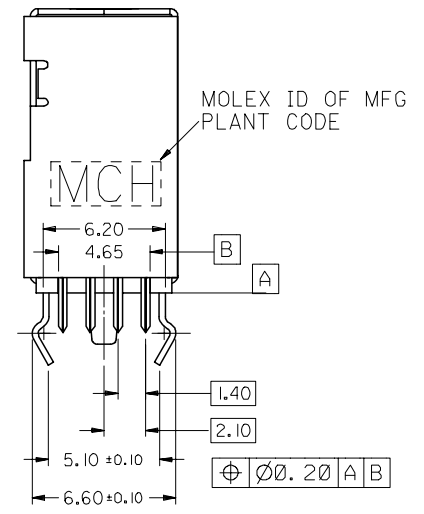
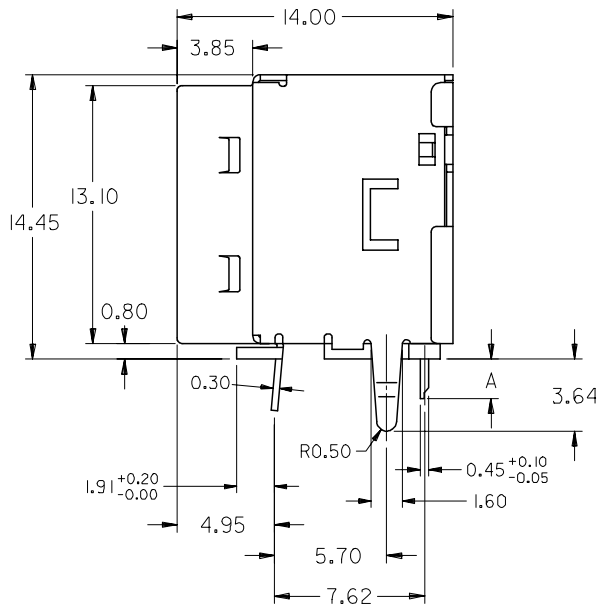
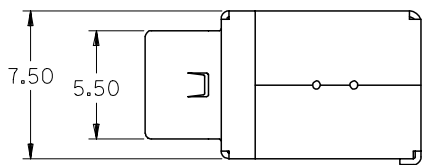
QUALITY SYMBOLS	DESCRIPTION
$\nabla=0$	
$\nabla C=0$	

GENERAL TOLERANCES (UNLESS SPECIFIED)	
mm	INCH
4 PLACES ± ---	± ---
3 PLACES ± ---	± ---
2 PLACES ± 0.25	± .1
1 PLACE ± 0.25	± .1
ANGULAR ± 3 °	
DRAFT WHERE APPLICABLE MUST REMAIN WITHIN DIMENSIONS	

DIMENSION STYLE	
MM ONLY	
DRAWN BY	DATE
DAVID HU	
CHECKED BY	DATE
APPROVED BY	DATE
MATERIAL NO.	DOCUMENT NO.
SEE CHART	SD-67226-003

SCALE	DESIGN UNITS	THIRD ANGLE PROJECTION
4:1	METRIC	
TITLE		
USB UPRIGHT CONNECTOR WITH REINFORCED COVER LEAD-FREE		
MOLEX INCORPORATED		
DOCUMENT NO.		SHEET NO.
SD-67226-003		1 OF 3
THIS DRAWING CONTAINS INFORMATION THAT IS PROPRIETARY TO MOLEX INCORPORATED AND SHOULD NOT BE USED WITHOUT WRITTEN PERMISSION		

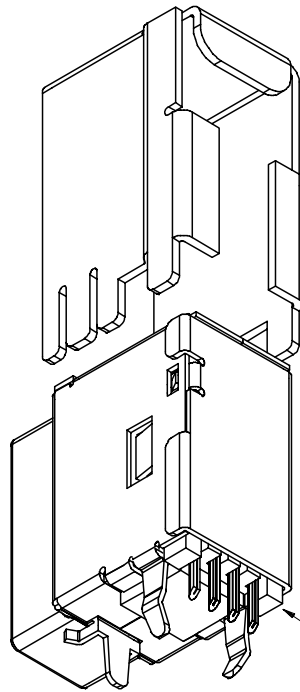
	10	9	8	7	6	5	4	3	2	1	
					SUB-ASS'Y P/N	DIMENSION"A"	PLATING	TERMINAL CONTACT PLATING	TERMINAL SOLDER PLATING	METAL SHEEL PLATING	
NOTES: 1.MATERIAL: HOUSING:HIGH TEMPERATURE NYLON,GLASS FIBRE FILLED,UL94-V0,COLOR:BLACK TERMINAL:PHOSPHOR BRONZE METAL SHELL:DEEP DRAWN STEEL 2.PLATING: TERMINAL: (a)GOLD FLASH ON CONTACT AREA,75MICRONCH MINIMUM BRIGHT TIN ON SOLDER TAIL UNDER 50MICRONCH MINIMUM NICKEL(NI) PLATE. (b)30MICRONCH MINIMUM GOLD(AU) ON ON CONTACT AREA, 75MICRONCH MINIMUM BRIGHT TIN ON SOLDER TAIL, UNDER 50MICRONCH MINIMUM NICKEL(NI) PLATE. (c)GOLD FLASH ON ON CONTACT AREA,75MICRONCH MINIMUM MATTE TIN ON SOLDER TAIL,UNDER 50MICRONCH MINIMUM NICKEL(NI) PLATE. METAL SHELL: (d)100MICRONCH MINIMUM BRIGHT TIN(Sn) ON METAL SHELL, UNDER 50MICRONCH MINIMUM NICKEL(NI) PLATE. (e)100MICRONCH MINIMUM MATTE TIN(Sn) ON METAL SHELL, UNDER 50MICRONCH MINIMUM NICKEL(NI) PLATE. 3.RECOMMENDED PCB THICKNESS:1.60±0.05mm					89485-8000	2.00 ^{+0.35} _{-0.15}	SEE NOTES(a)+(d)	GOLD FLASH	75 MICRONCH BRIGHT TIN	100 MICRONCH BRIGHT TIN	
					89485-8001			SEE NOTES(b)+(d)			30 MICRONCH GOLD
						89485-8002		SEE NOTES(a)+(d)	GOLD FLASH		
						89485-8003	2.50 ^{+0.35} _{-0.10}	SEE NOTES(b)+(d)	30 MICRONCH GOLD		
						89485-8012		SEE NOTES(c)+(e)	GOLD FLASH	75 MICRONCH MATTE TIN	100 MICRONCH MATTE TIN



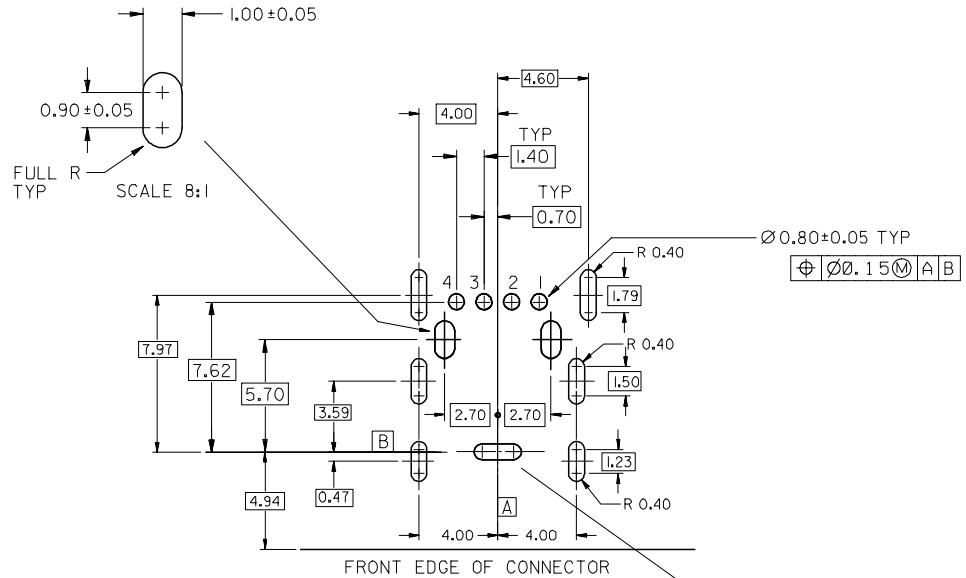
REVISED EC NO: SH2007-0468 DRWN:HYE01 2007/01/19 CHKD:WANG 2007/01/19 APPR:JNCHEN 2007/01/26	DESCRIPTION REV	QUALITY SYMBOLS ▽=0 ▽=0	GENERAL TOLERANCES (UNLESS SPECIFIED)		DIMENSION STYLE MM ONLY		SCALE 4:1	DESIGN UNITS METRIC	THIRD ANGLE PROJECTION	
		4 PLACES ± --- ± --- 3 PLACES ± --- ± --- 2 PLACES ± 0.25 ± .1 1 PLACE ± 0.25 ± .1	mm INCH	DRAWN BY DAVID HU	DATE	TITLE USB UPRIGHT CONNECTOR WITH REINFORCED COVER LEAD-FREE				
		ANGULAR ± 3 °		CHECKED BY DATE	APPROVED BY DATE	MOLEX INCORPORATED				
		DRAFT WHERE APPLICABLE MUST REMAIN WITHIN DIMENSIONS		MATERIAL NO. SEE SHEET1	DOCUMENT NO. SD-67226-003	SHEET NO. 2 OF 3				

10 9 8 7 6 5 4 3 2 1

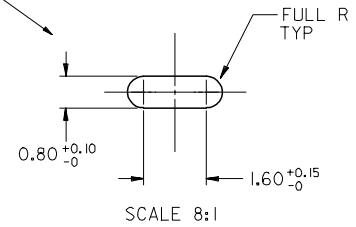
REINFORCED COVER



USB UPRIGHT CONNECTOR
P/N: 89485-xxxx



RECOMMENDED PCB LAYOUT



REVISED EC NO: SH2007-0468 DRWN:HYE01 2007/01/19 CHKD:WANG 2007/01/19 APPR:INCHEH 2007/01/26	QUALITY SYMBOLS ▽=0 ◻=0	GENERAL TOLERANCES (UNLESS SPECIFIED)		DIMENSION STYLE MM ONLY		SCALE 4:1	DESIGN UNITS METRIC	THIRD ANGLE PROJECTION																	
		<table border="1"> <thead> <tr> <th></th> <th>mm</th> <th>INCH</th> </tr> </thead> <tbody> <tr> <td>4 PLACES</td> <td>±---</td> <td>±---</td> </tr> <tr> <td>3 PLACES</td> <td>±---</td> <td>±---</td> </tr> <tr> <td>2 PLACES</td> <td>±0.25</td> <td>±.1</td> </tr> <tr> <td>1 PLACE</td> <td>±0.25</td> <td>±.1</td> </tr> </tbody> </table>			mm	INCH	4 PLACES	±---	±---	3 PLACES	±---	±---	2 PLACES	±0.25	±.1	1 PLACE	±0.25	±.1	DRAWN BY DAVID HU		TITLE USB UPRIGHT CONNECTOR WITH REINFORCED COVER LEAD-FREE		MOLEX INCORPORATED		SHEET NO. 3 OF 3
			mm	INCH																					
		4 PLACES	±---	±---																					
3 PLACES	±---	±---																							
2 PLACES	±0.25	±.1																							
1 PLACE	±0.25	±.1																							
ANGULAR ± 3 °		CHECKED BY DATE		APPROVED BY DATE																					
DRAFT WHERE APPLICABLE MUST REMAIN WITHIN DIMENSIONS		MATERIAL NO. SEE SHEET1		DOCUMENT NO. SD-67226-003																					
THIS DRAWING CONTAINS INFORMATION THAT IS PROPRIETARY TO MOLEX INCORPORATED AND SHOULD NOT BE USED WITHOUT WRITTEN PERMISSION																									

9 8 7 6 5 4 3 2 1