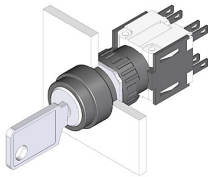


# EAO – Your Expert Partner for Human Machine Interfaces

## 51-372.F22D - Keylock switch 3 positions

### 51-372.F22D - Keylock switch 3 positions



*Attention: The preview is based on a sample product. This can differ from your current configuration.*

#### Mounting

Mounting cut-out  
Design  $\varnothing$  16 mm  
raised

#### Front

Front dimension  $\varnothing$  18 mm  
Front shape round

#### Other Attributes

Weight 0,025 kg

#### Operating-/Indication part

Switching angle

#### IP-Rating

Front protection IP65

#### Connection Method

Terminal Solder 2.8 x 0.5 mm

#### Actuator

Switching action Maintain(a) - Rest(a) - Maintain(a)

#### Switching element

Rotary positions 3  
Switching system Snap-action switching element  
Switching current 5 A  
Contacts 2 NC + 2 NO  
Contact material  
Switching voltage 250 V AC

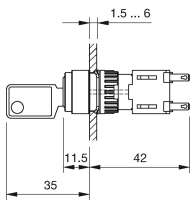
#### Function

Keylock switch

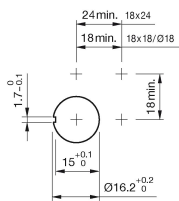
# EAO – Your Expert Partner for Human Machine Interfaces

## 51-372.F22D - Keylock switch 3 positions

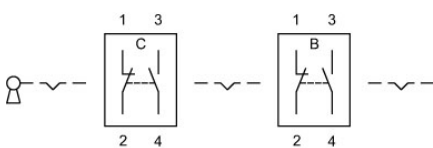
### Dimensions



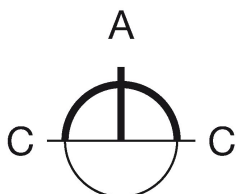
### Mounting cut-outs



### Wiring diagram



### Switching positions



### Additional information

Standard lock: DOM 311

Two keys are supplied with each key lock switch

Optional lock numbers on request

### Legend

Contacts: NC = Normally closed, NO = Normally open

Switching action: A = Rest, C = Maintained