

CIRCUIT SIZE	DIM. "A"	DIM. "B"	DIM. "C"
2	—	.21 (5.4)	.370 (9.40)
4	.17 (4.2)	.38 (9.6)	.535 (13.60)
6	.33 (8.4)	.54 (13.8)	.701 (17.80)
8	.50 (12.6)	.71 (18.0)	.866 (22.00)
10	.66 (16.8)	.87 (22.2)	1.031 (26.20)
12	.83 (21.0)	1.04 (26.4)	1.197 (30.40)
14	.99 (25.2)	1.20 (30.6)	1.362 (34.60)
16	1.16 (29.4)	1.37 (34.8)	1.528 (38.80)
18	1.32 (33.6)	1.54 (39.0)	1.693 (43.00)
20	1.49 (37.8)	1.70 (43.2)	1.858 (47.20)
22	1.65 (42.0)	1.87 (47.4)	2.024 (51.40)
24	1.82 (46.2)	2.03 (51.6)	2.189 (55.60)

NOTES:

1. HOUSING MATERIAL:

A - NYLON 6/6, UNFILLED U.L. 94V-2, COLOR NATURAL.

B - NYLON 6/6, UNFILLED U.L. 94V-0, COLOR NATURAL.

TERMINAL MATERIAL: BRASS ALLOY

2. TERMINAL PLATING

T - .000035 MIN. TIN OVER
.000020 MIN. COPPER OVERALL.

GS - .000030 MIN. SELECT GOLD AND
.000100 MIN. SELECT MATTE TIN
OVER .000050 MIN. NICKEL OVERALL.

GS2 - .000015 MIN. SELECT GOLD AND
.000100 MIN. SELECT MATTE TIN
OVER .000050 MIN. NICKEL OVERALL.

S - .000100 MIN. BRIGHT TIN OVER .000050 MIN. NICKEL OVERALL.

C - .000100 MIN. MATTE TIN OVER .000050 MIN. NICKEL OVERALL.

3. PRODUCT SPECIFICATION: PS-5556-001

4. PACKAGING SPECIFICATION: SEE CHART

5. PART MATES WITH MINI-FIT JR. RECEPTACLE #5557.

6. CONNECTOR ASSEMBLIES ARE NOT TO BE MATED OR UNMATED WHILE CIRCUITS ARE LIVE.

7. HOUSING STYLE

1 - WITHOUT PEGS, WITHOUT DRAIN HOLES

2 - WITHOUT PEGS, WITH DRAIN HOLES

3 - WITH PEGS, WITHOUT DRAIN HOLES

4 - WITH PEGS, WITH DRAIN HOLES

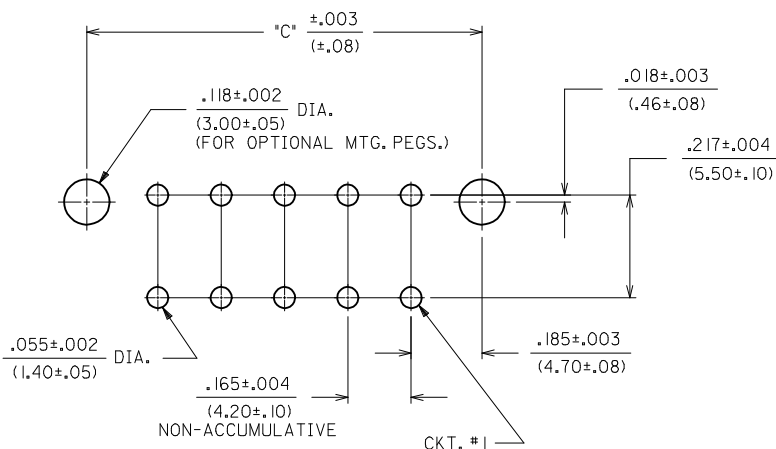
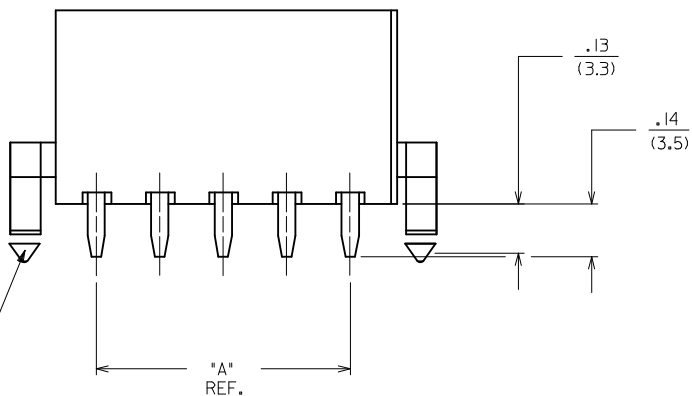
8. PARTS ARE NOT DESIGNED FOR CURRENT SHARING.

\triangle THIS DIMENSION APPLIES TO DUAL AND SINGLE ROW 4 THRU 24 CIRCUIT PARTS

THIS DIMENSION IS .490/(12.45) FOR 3 CIRCUIT SINGLE ROW PARTS ONLY.

10. PART CONFORMS TO CLASS "B" REQUIREMENTS OF COSMETIC SPECIFICATION PS-45499-002

11. 4 CIRCUIT PARTS WILL HAVE PEG DESIGN A. 5 CIRCUIT PARTS WILL HAVE PEG DESIGN B.



RECOMMENDED P.C. BOARD LAYOUT
VIEWED FROM COMPONENT SIDE

ADD 42382-0030 EC NO: UCP2015-0551 DRWN: DFOX 2014/08/07 CHKD: JBELL 2014/08/07 APPR: FSMITH 2014/08/14 REV L7	QUALITY SYMBOLS	GENERAL TOLERANCES (UNLESS SPECIFIED)	DIMENSION STYLE IN/MM	SCALE 4:1	DESIGN UNITS METRIC	THIRD ANGLE PROJECTION
	$\nabla = 0$	mm INCH	DRAWN BY DATE	VERTICAL HDR. ASSEMBLIES WITH MIXED TERM. PLATING (MINI-FIT JR. SERIES) molex DOCUMENT NO. SDA-42382-**** SHEET NO. 1 OF 3		
	$\nabla = 0$	4 PLACES \pm --- \pm ---	RJF 10/04/88			
	$\nabla = 0$	3 PLACES \pm --- $\pm .015$	CHECKED BY DATE			
$\nabla = 0$	2 PLACES ± 0.38 $\pm .020$	JTR 10/04/88				
		1 PLACE ± 0.50 \pm ---	APPROVED BY DATE			
		0 PLACE \pm \pm	FSMITH 2011/01/17			
		ANGULAR $\pm 1/2^\circ$	MATERIAL NO.			
		DRAFT WHERE APPLICABLE MUST REMAIN WITHIN DIMENSIONS	SEE CHART			
			SIZE C	THIS DRAWING CONTAINS INFORMATION THAT IS PROPRIETARY TO MOLEX INCORPORATED AND SHOULD NOT BE USED WITHOUT WRITTEN PERMISSION		

PART NO.	ENG. NO.	CKT SIZE	HSG ROW STYLE	CHARACTERISTIC DESCRIPTION	PACKAGING PER	TERMINAL PLATING REQUIRED AT EACH CIRCUIT LOCATION: V = VOID																							
						1	2	3	4	5	6	7	8	9	10	11	12	13	14	15	16	17	18	19	20	21	22	23	24
						I5-24-0451	A-42382-0003	24	DUAL	24A1A	TBD	T	T	T	T	T	T	GS	GS	GS	GS	GS	T	T	T	T	T	T	T
I5-24-0452	A-42382-0005	18	DUAL	18B1A	TBD	T	T	T	T	T	T	T	T	T	T	GS	GS	GS	T	T	T	T	T	-	-	-	-		
I5-24-0453	A-42382-0006	03	SINGLE	03A3B	TBD	T	V	T	-	-	-	-	-	-	-	-	-	-	-	-	-	-	-	-	-	-			
I5-24-0454	A-42382-0007	18	DUAL	18B4A	TBD	T	T	T	T	T	T	T	T	T	T	GS	GS	GS	T	T	T	T	T	-	-	-	-		
I5-24-0456	A-42382-0009	20	DUAL	20A1B	TBD	T	T	T	T	T	T	T	T	T	T	T	T	T	T	T	T	T	T	V	T	-	-		
I5-24-0457	A-42382-0010	20	DUAL	20A2B	TBD	T	T	T	T	T	T	T	T	T	T	T	T	T	T	T	T	T	T	V	T	-	-		
I5-24-0459	A-42382-0012	22	DUAL	22A1B	TBD	V	T	V	T	V	T	T	T	T	T	T	T	T	T	T	T	T	T	T	T	T	-		
I5-24-0460	A-42382-0013	22	DUAL	22A1B	TBD	T	V	T	V	T	V	T	T	T	T	T	T	T	T	T	T	T	T	T	T	T	-		
I5-24-0461	A-42382-0014	22	DUAL	22A1B	TBD	V	T	T	T	T	T	T	T	T	T	T	T	T	T	T	T	T	T	T	T	T	-		
423820015	A-42382-0015	06	DUAL	06A4B	TBD	T	V	T	T	V	T	-	-	-	-	-	-	-	-	-	-	-	-	-	-	-			
423820016	A-42382-0016	20	DUAL	20B2B	TBD	T	T	T	T	T	T	T	T	T	T	T	T	T	T	T	T	T	T	V	T	-	-		
423820017	A-42382-0017	03	SINGLE	03B3C	TBD	T	V	T	-	-	-	-	-	-	-	-	-	-	-	-	-	-	-	-	-	-			

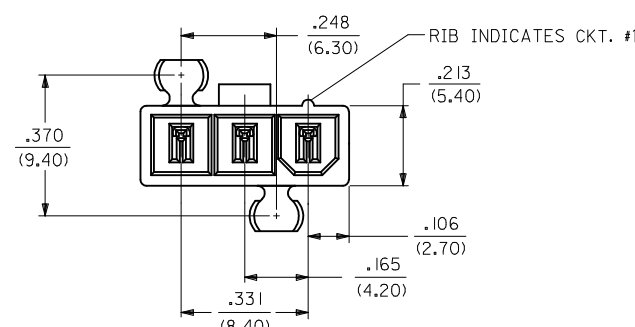
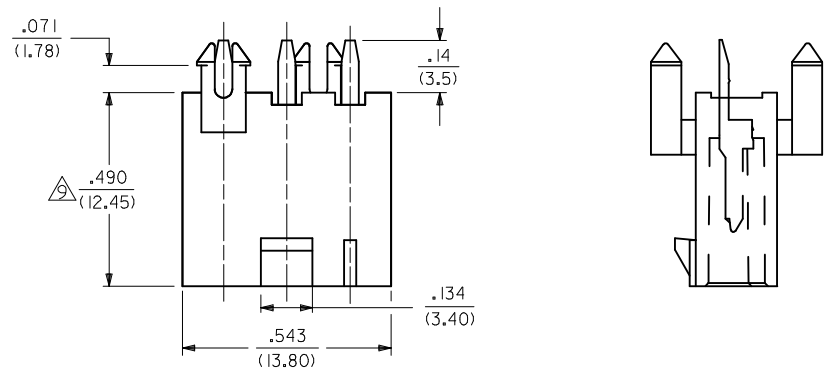
CHARACTERISTICS LEGEND:

CIRCUIT SIZE _____ (***)
 (02-24)

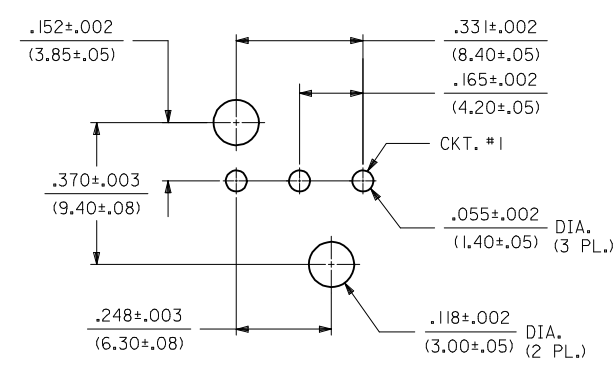
HOUSING MATERIAL _____
 A = 94V-2, NATURAL
 B = 94V-0, NATURAL

HOUSING STYLE _____
 1 = W/O PEGS, W/O DRAIN HOLES
 2 = W/O PEGS, W/ DRAIN HOLES
 3 = W/ PEGS, W/O DRAIN HOLES
 4 = W/ PEGS, W/ DRAIN HOLES

PLATING COMBINATION _____
 A = 100 M.I. TIN, 30 M.I. SEL. GOLD
 B = 35 M.I. TIN
 C = 100 M.I. BRIGHT TIN OVER NICKEL
 OVER COPPER.



3-CIRCUIT VERTICAL SINGLE ROW HEADER ASSEMBLY
 (PART SHOWN FULLY LOADED)



RECOMMENDED P.C. BOARD LAYOUT FOR 3-CKT. HEADER WITH PEGS.
 VIEWED FROM COMPONENT SIDE

SEE SHEET 1 EC NO: UCP2015-0551 DRWN: DFOX 2014/08/07 CHKD: JBELL 2014/08/07 APPR: FSMITH 2014/08/14	QUALITY SYMBOLS ▽=0 ▽=0 ▽=0	GENERAL TOLERANCES (UNLESS SPECIFIED)		DIMENSION STYLE IN/MM		SCALE 4:1	DESIGN UNITS METRIC	THIRD ANGLE PROJECTION
		mm	INCH	DRAWN BY RJF	DATE 10/04/88	TITLE	VERTICAL HDR. ASSEMBLIES WITH MIXED TERM. PLATING (MINI-FIT JR. SERIES)	
L7	DESCRIPTION	4 PLACES ± --- ± ---	3 PLACES ± --- ± .015	CHECKED BY JTR	DATE 10/04/88	molex		
		2 PLACES ± 0.38 ± .020	1 PLACE ± 0.50 ± ---	APPROVED BY FSMITH	DATE 2011/01/17			
ANGULAR ±1/2°		DRAFT WHERE APPLICABLE MUST REMAIN WITHIN DIMENSIONS		MATERIAL NO. SEE CHART		DOCUMENT NO. SDA-42382-****	SHEET NO. 2 OF 3	
THIS DRAWING CONTAINS INFORMATION THAT IS PROPRIETARY TO MOLEX INCORPORATED AND SHOULD NOT BE USED WITHOUT WRITTEN PERMISSION								

PART NO.	ENG. NO.	CKT SIZE	HSG ROW STYLE	CHARACTERISTIC DESCRIPTION	PACKAGING PER	TERMINAL PLATING REQUIRED AT EACH CIRCUIT LOCATION: V = VOID																							
						1	2	3	4	5	6	7	8	9	10	11	12	13	14	15	16	17	18	19	20	21	22	23	24
423820018	A-42382-0018	10	DUAL	10A1B	TBD	T	T	T	T	T	T	V	T	T	T	-	-	-	-	-	-	-	-	-	-	-	-		
423820020	A-42382-0020	10	DUAL	10A1B	TBD	T	V	T	V	T	T	V	T	V	T	-	-	-	-	-	-	-	-	-	-	-	-		
423820021	A-42382-0021	16	DUAL	16B4C	TBD	V	S	V	V	S	V	V	S	V	S	V	V	S	V	V	S	-	-	-	-	-	-		
423820022	A-42382-0022	05	SINGLE	05B3C	TBD	S	V	V	S	V	-	-	-	-	-	-	-	-	-	-	-	-	-	-	-	-			
423820023	A-42382-0023	04	SINGLE	04A3C	TBD	S	V	V	S	-	-	-	-	-	-	-	-	-	-	-	-	-	-	-	-	-			
423820024	A-42382-0024	05	SINGLE	05B3C	TBD	S	V	V	S	S	-	-	-	-	-	-	-	-	-	-	-	-	-	-	-	-			
423820025	A-42382-0025	04	SINGLE	04A3C	PK-5566-002	S	V	V	S	-	-	-	-	-	-	-	-	-	-	-	-	-	-	-	-	-			
423820026	42382-0026	05	SINGLE	05B3C	PK-5566-002	S	V	S	V	S	-	-	-	-	-	-	-	-	-	-	-	-	-	-	-	-			
423820027	42382-0027	08	DUAL	08A1C	PK-5566-001	S	V	S	S	S	V	V	S	-	-	-	-	-	-	-	-	-	-	-	-	-			
423820028	42382-0028	05	SINGLE	05B3D	PK-5566-002	C	V	V	V	C	-	-	-	-	-	-	-	-	-	-	-	-	-	-	-	-			
423820029	42382-0029	05	SINGLE	05B3A	PK-5566-002	GS	V	GS	V	GS	-	-	-	-	-	-	-	-	-	-	-	-	-	-	-	-			
423820030	42382-0030	08	DUAL	08B3A	PK-5566-001	GS	V	GS	V	V	GS	V	GS	-	-	-	-	-	-	-	-	-	-	-	-	-			

CHARACTERISTICS LEGEND:

CIRCUIT SIZE _____

(02-24)

HOUSING MATERIAL _____

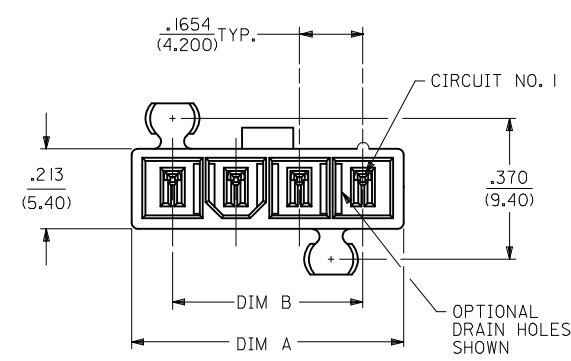
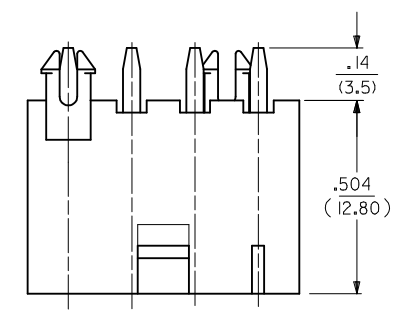
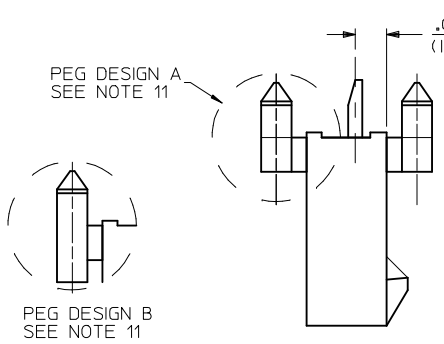
A = 94V-2,NATURAL
B = 94V-0,NATURAL

HOUSING STYLE _____

1 = W/O PEGS, W/O DRAIN HOLES
2 = W/O PEGS, W/ DRAIN HOLES
3 = W/ PEGS, W/O DRAIN HOLES
4 = W/ PEGS, W/ DRAIN HOLES

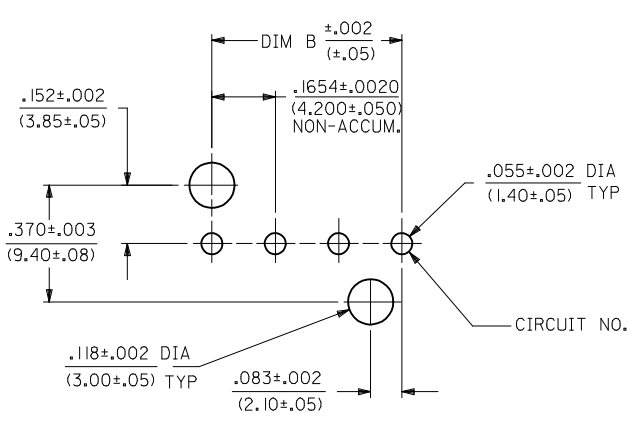
PLATING COMBINATION _____

A = 100 M.I. TIN, 30 M.I. SEL. GOLD
B = 35 M.I. TIN OVER COPPER.
C = 100 M.I. BRIGHT TIN OVER NICKEL.
D = 100 M.I. MATTE TIN OVER NICKEL.



VIEWS APPLY TO 4 AND 5 CIRCUIT SINGLE ROW HEADER ASSEMBLY (PART SHOWN FULLY LOADED)

CKT SIZE	DIM A	DIM B
4	.709 (18.00)	.496 (12.60)
5	.874 (22.20)	.661 (16.80)



RECOMMENDED HOLE LAYOUT FOR
.070/(1.78) MAX. THICK P. C. BOARD
VIEWED FROM COMPONENT SIDE
FOR 4 & 5 CIRCUIT SINGLE ROW HEADER

SEE SHEET 1 EC NO: UCP2015-0551 DRWN: DFOX 2014/08/07 CHKD: JELL 2014/08/07 APPR: FSMITH 2014/08/14 REV L7	QUALITY SYMBOLS ▽=0 ▽=0 ▽=0	GENERAL TOLERANCES (UNLESS SPECIFIED) <table border="1"> <tr><th colspan="2">mm</th><th>INCH</th></tr> <tr><td>4 PLACES</td><td>± .---</td><td>± .---</td></tr> <tr><td>3 PLACES</td><td>± .---</td><td>± .015</td></tr> <tr><td>2 PLACES</td><td>± 0.38</td><td>± .020</td></tr> <tr><td>1 PLACE</td><td>± 0.50</td><td>± .---</td></tr> <tr><td>0 PLACE</td><td>±</td><td>±</td></tr> </table>	mm		INCH	4 PLACES	± .---	± .---	3 PLACES	± .---	± .015	2 PLACES	± 0.38	± .020	1 PLACE	± 0.50	± .---	0 PLACE	±	±	DIMENSION STYLE IN/MM DRAWN BY: RJF DATE: 10/04/88 CHECKED BY: JTR DATE: 10/04/88 APPROVED BY: FSMITH DATE: 2011/01/17	SCALE: 4:1 DESIGN UNITS: METRIC THIRD ANGLE PROJECTION	TITLE: VERTICAL HDR. ASSEMBLIES WITH MIXED TERM. PLATING (MINI-FIT JR. SERIES) molex DOCUMENT NO. SDA-42382-**** SHEET NO. 3 OF 3
	mm		INCH																				
	4 PLACES	± .---	± .---																				
	3 PLACES	± .---	± .015																				
2 PLACES	± 0.38	± .020																					
1 PLACE	± 0.50	± .---																					
0 PLACE	±	±																					
DRAFT WHERE APPLICABLE MUST REMAIN WITHIN DIMENSIONS		MATERIAL NO. SEE CHART	THIS DRAWING CONTAINS INFORMATION THAT IS PROPRIETARY TO MOLEX INCORPORATED AND SHOULD NOT BE USED WITHOUT WRITTEN PERMISSION																				