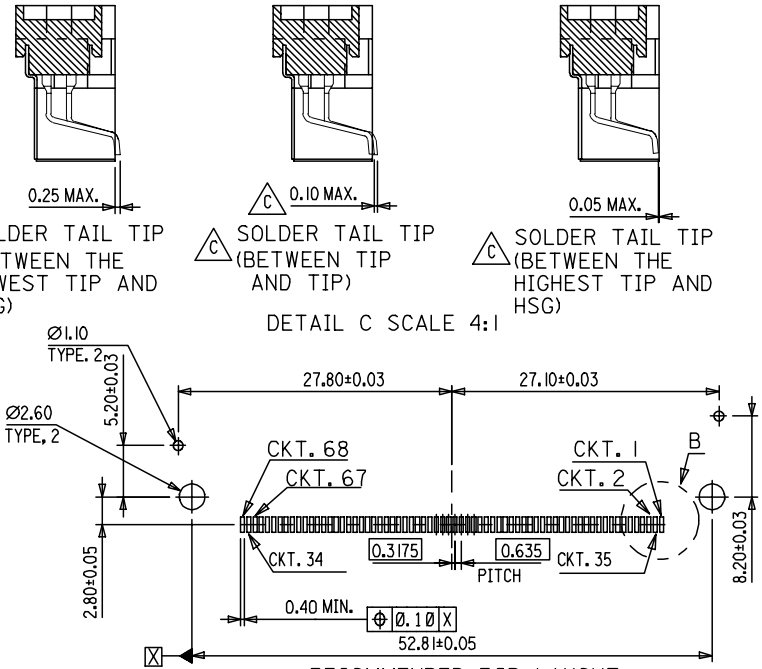
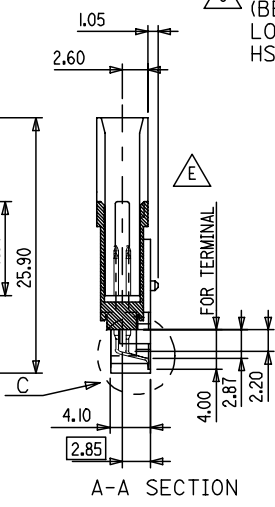
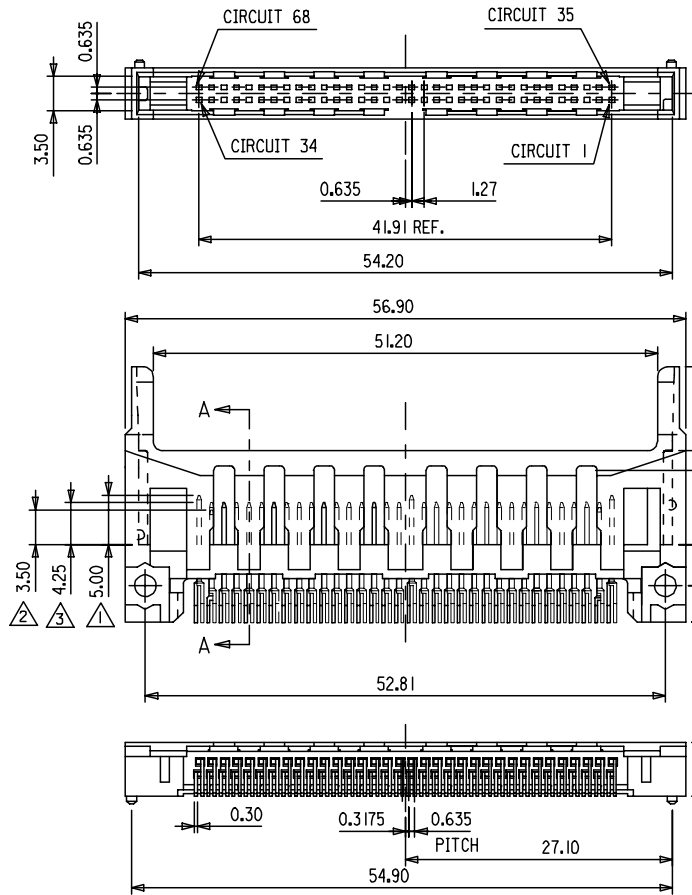


10 9 8 7 6 5 4 3 2 1

F
E
D
C
B
A

F
E
D
C
B
A



- NOTES:
- 1. APPLIES TO CIRCUIT NUMBER: 1, 17, 34, 35, 51, 68
 - 2. APPLIES TO CIRCUIT NUMBER: 36, 67
 - 3. APPLIES TO CIRCUIT NUMBER: THE OTHERS
 - 4. COPLANARITY BETWEEN SOLDER TAILS IS 0.10mm MAX.
 - 5. TRUE POSITION BETWEEN SOLDER TAILS IS 0.15 mm MAX.
 - 6. PRODUCT SPEC : PS-67160-011
 - 8. FINISH: SELECTIVE GOLD (Au) IN CONTACT AREA. THICKNESS=0.38 MICROMETER MINIMUM. SELECTIVE TIN ALLOY IN SOLDER TAIL AREA THICKNESS=2.50 MICROMETER MINIMUM.
 - 9. NICKEL (Ni) OVERALL.
 - 9. THE PACKAGE OF P/N 67130-0009 PER PK-67130-001.

DETAIL B SCALE 4:1

MATERIAL NO.	DESCRIPTION	PACKAGE
67130-0009	W MYLAR	T&R

OBsolesce PART NO
EC NO: SH2006-0806
DRWN:HZHA006
CHKD:GRATE MA
APPR: JNCHEN

QUALITY SYMBOLS	DESCRIPTION
▽=0	
△=0	

GENERAL TOLERANCES (UNLESS SPECIFIED)	
mm	INCH
4 PLACES ± ---	± ---
3 PLACES ± ---	± ---
2 PLACES ± 0.25	± ---
1 PLACE ± 0.25	± ---
ANGULAR ± 3°	

DIMENSION STYLE	
MM ONLY	
DRAWN BY	DATE
ARNOLD	99/02/22
CHECKED BY	DATE
WWSCHANG	99/02/22
APPROVED BY	DATE
MLIN	99/02/22
MATERIAL NO.	DOCUMENT NO.
SEE TABLE	SD-67130-003

SCALE	DESIGN UNITS	THIRD ANGLE PROJECTION
	METRIC	
TITLE		
PC CARD HEADER ASS'Y FOR 3.3V SMT STANDARD TYPE		
MOLEX INCORPORATED		
DOCUMENT NO.		SHEET NO.
SD-67130-003		1 OF 1
DRAFT WHERE APPLICABLE MUST REMAIN WITHIN DIMENSIONS		
THIS DRAWING CONTAINS INFORMATION THAT IS PROPRIETARY TO MOLEX INCORPORATED AND SHOULD NOT BE USED WITHOUT WRITTEN PERMISSION		

9 8 7 6 5 4 3 2 1

8 7 6 5 4 3 2 1

SEE TABLE
ENG. NO.
EDP NO.
SIMILAR ITEM
CADFILE NO.S6736701.S01
DO NOT SCALE DRAWING

EJECTOR			BUTTON TYPE		PUSH PUSH BUTTON				Up/Down BUTTON				Turn BUTTON				Turn With Spring				Straight BUTTON								
			Push Side		Right		Left		Right		Left		Right		Left		Right		Left		Right		Left						
			Screw	P/N	Screw	W/O Screw	Screw	W/O Screw	Screw	W/O Screw	Screw	W/O Screw	Screw	W/O Screw	Screw	W/O Screw	Screw	W/O Screw	Screw	W/O Screw	Screw	W/O Screw	Screw	W/O Screw					
SMT (67130)	3.3 V PCMCIA	Normal Sinker	67130-0002	67349-0001					67121-0005															67121-0010					67349-0010
		Reverse	89426-1000	N/A					N/A															N/A					N/A
		Stand-off																											
	5.0 V PCMCIA	Normal Sinker																											
		Reverse	67130-0003	OK																									OK
		Stand-off																											
	3.3 V Card Bus	Normal Sinker	67130-0001	67160-0001						67160-0005																		OK	
		Reverse	67232-0001/2	N/A						N/A																		N/A	
		Stand-off																											
	5.0 V Card Bus	Normal Sinker																											
		Reverse																											
		Stand-off																											
DIP (67286)	3.3 V PCMCIA	Normal Sinker																											
		Reverse	67286-0001	OK																							OK		
		Stand-off																											
	5.0 V PCMCIA	Normal Sinker																											
		Reverse																											
		Stand-off																											
	3.3 V Card Bus	Normal Sinker																											
		Reverse																											
		Stand-off																											
	5.0 V Card Bus	Normal Sinker																											
		Reverse																											
		Stand-off																											

P/N RULE :

FOR TOTAL ASS'Y P/N:
 1.) Every Row has its Series Number. The Option Number will be the same as Ejector', except 67170-0001.
 For example: The Header of Total Ass'y Series Number 67160 is 67130-0001.
 The Header of Total Ass'y Series Number 67170 is 67232-0001.
 The Ejector of Total Ass'y Part Number 67160-0005 is 67121-0005.

FOR EJECTOR P/N:
 1.) Right Push Ejector Option Number : Odd Number
 Left Push Ejector Option Number : Even Number
 2.) Ejector Button Color Number :
 The first character of ejector option number represent color number
 ex. : -0*** Color : Black
 -1*** Color : Gray

FOR HEADER P/N:
 1.) New Created Header P/N for different Soldering :
 SMT Series Header : Series Number will be 67130
 DIP Series Header : Series Number will be 67286
 2.) New Created Header P/N for different Mounting Type :
 ex. : -0*** Normal Type
 -1*** Sinker Type
 -2*** Reverse Type
 -3*** Stand-off Type

REVISED EC NO. DRAWN: DAVID HU 2004/12/06 CHK: APPR:	NEW RELEASED EC NO.T2000-0101 DRAWN: Vincent Lin CHK: Tom Lu APPR: Mega Lin	MAJOR CRITICAL DESCRIPTION REV	QUALITY SYMBOLS		GENERAL TOLERANCES: (UNLESS SPECIFIED)		SCALE	DESIGN UNITS	THIRD ANGLE	DIMENSIONS:		SHT	REV	
			4 PLACES ±0. INCH		1:1		<input checked="" type="checkbox"/> mm	<input type="checkbox"/> INCH	<input type="checkbox"/> mm	<input type="checkbox"/> mm	<input type="checkbox"/> mm	<input type="checkbox"/> mm	<input type="checkbox"/> mm	REVISE ON CAD ONLY
			3 PLACES ±0. INCH		DRAWN BY & DATE		Vincent Lin '000214		CHECKED BY & DATE		TITLE: PC CARD HOST ASS'Y P/N LIST			
			2 PLACES ±0.25 ±.010		APPROVED BY & DATE				MATERIAL NO.		DRAWING NO.		SHEET NO.	
1 PLACE ±0.25 ±.010		ANGULAR: ±3°		CAD FILENAME		S6736701.S01		SEE TABLE		SD-67367-001		I		
DRAFT WHERE APPLICABLE MUST REMAIN WITHIN DIMENSIONS		THIS DRAWING CONTAINS INFORMATION THAT IS PROPRIETARY TO MOLEX INCORPORATED AND SHOULD NOT BE USED WITHOUT WRITTEN PERMISSION.										SIZE A3		