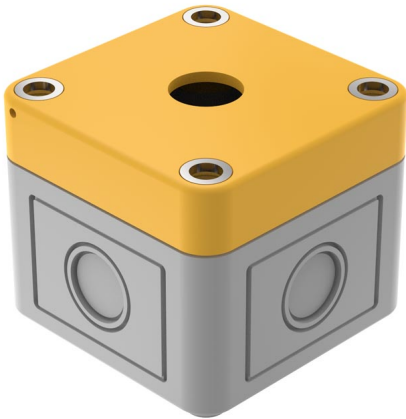


# EAO – Your Expert Partner for Human Machine Interfaces

61-9480.6 - Enclosure

## 61-9480.6 - Enclosure



*Attention: The preview is based on a sample product. This can differ from your current configuration.*

## Other Attributes

Dimension	65 x 65 x 57 mm
Weight	0,099 kg
Colour	grey, similar RAL 7035
Material	

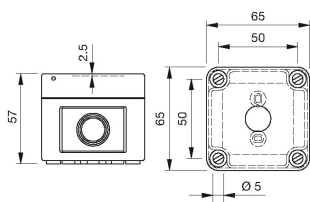
## IP-Rating

Protection degree	IP66
-------------------	------

# EAO – Your Expert Partner for Human Machine Interfaces

61-9480.6 - Enclosure

## Dimensions



## Additional information

Cover lead-sealable  
Openings for cable gland M16 or M20  
With mounting cut-out  $\varnothing 16$  mm, without anti- twist device