

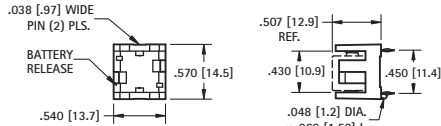
THRU-HOLE (THM) & SURFACE MOUNT (SMT) COIN CELL HOLDERS

DESIGN ADVANTAGES...

- Reliable spring tension assures low contact resistance
- Retains battery securely to withstand shock and vibration
- Base material UL Rated 94V-0. Impervious to most industrial solvents
- Operating temperature range: -60°F to +293°F (-50°C to +145°C)

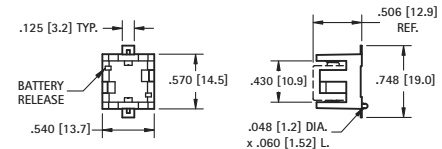
IDEALLY SUITED FOR...

- Computer memory, power transfer and back-up systems
- Video and telecommunications power back-up
- Microprocessors and Microcomputer memory hold (desktop and laptop applications)
- Industrial and commercial security and alarm systems
- PC/104 application



"1/3N"

AVAILABLE ON TAPE AND REEL

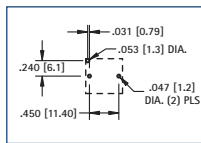


MATERIAL:

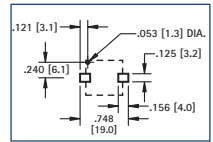
Base: High Temperature Nylon 46, UL Rated 94V-0
Contacts: .012 (.30) Phosphor Bronze, Tin Plate

CAT. NO.	CELLS	BATTERY REFERENCE
503	1	DL1/3N, K58L, CR1/3N
	2	SR44, 357, MS76, G-13, 303, V313, PX76A

Mounting Detail



Pad Layout

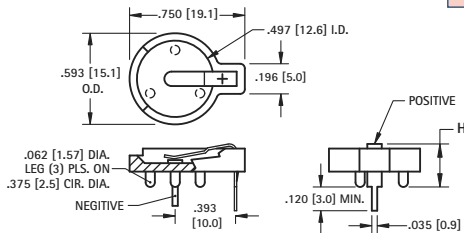


MATERIAL:

Base: High Temperature Nylon 46, UL Rated 94V-0
Contacts: .012 (.30) Phosphor Bronze, Gold Plate (Flash)

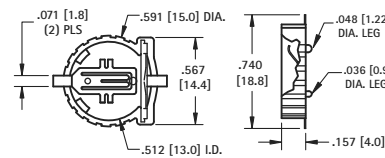
CAT. NO. BULK	ON TAPE & REEL	CELLS	BATTERY REFERENCE
498	498TR	1	DL1/3N, K58L, CR1/3N
		2	SR44, 357, MS76, G-13, 303, V313, PX76A

Tape & Reel Specs: 44mm wide; 20mm pitch; 13 inch reel (200 pieces per reel)



12mm

AVAILABLE ON TAPE AND REEL

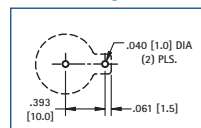


MATERIAL:

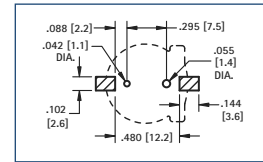
Base: PBT, UL Rated 94V-0
Positive Contact: .015 (.38) Spring Steel, Tin-Nickel Plate
Negative Contact: .035 (.89) Dia. Steel, Tin-Nickel Plate

CAT. NO.	HEIGHT (H)	CELLS	BATTERY REFERENCE
500	.280 (7.1)	1	BR1212, CR1216, CL1220, CR1225
501	.380 (9.7)	2	BR1212, CR1216, CL1220, CR1225

Mounting Detail



Pad Layout

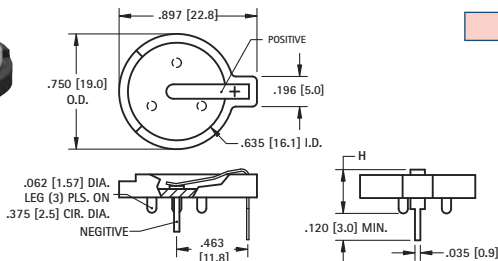


MATERIAL:

Base: Glass Filled PPS, UL Rated 94V-0
Contacts: .008 (.20) Phosphor Bronze, Gold Plate (Flash)

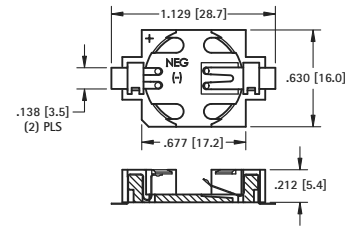
CAT. NO. BULK	ON TAPE & REEL	CELLS	BATTERY REFERENCE
1056	1056TR	1	CR1220, BR1220

Tape & Reel Specs: 32mm wide; 20mm pitch; 13 inch reel (500 per reel)



16mm

AVAILABLE ON TAPE AND REEL

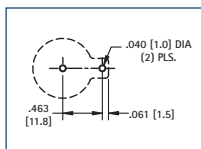


MATERIAL:

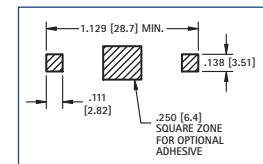
Base: PBT, UL Rated 94V-0
Positive Contact: .015 (.38) Spring Steel, Tin-Nickel Plate
Negative Contact: .035 (.89) Dia. Steel, Tin-Nickel Plate

CAT. NO.	HEIGHT (H)	CELLS	BATTERY REFERENCE
502	.285 (7.3)	1	CR1612, CL1616, CL1620
		2	CR1612
502-3	.330 (8.4)	1	BR1625, CR1632
		2	BR1616, CR1620, CL1620

Mounting Detail



Pad Layout

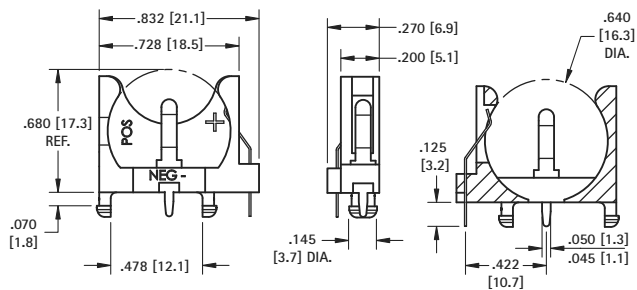


MATERIAL:

Base: Glass Filled LCP, UL Rated 94V-0
Contacts: .006 (.15) Phosphor Bronze, Gold Plate (Flash)

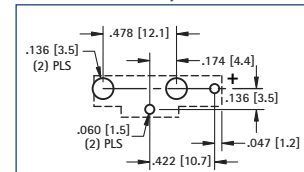
CAT. NO. BULK	ON TAPE & REEL	CELLS	BATTERY REFERENCE
504	504TR	1	BR1625, CR1625

Tape & Reel Specs: 44mm wide; 24mm pitch; 13 inch reel (500 per reel)



16mm VERTICAL

Pad Layout



MATERIAL:

Base: PBT, UL Rated 94V-0
Contacts: .010 (.25) Steel, Tin-Nickel Plate
Battery Reference: (1) cell: BR1612, CR1616, CL1620, CR1625, BR1632

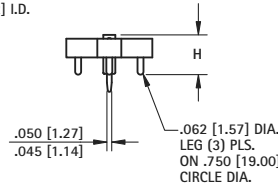
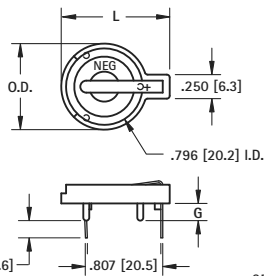
CAT. NO. 1069

"1/3N" to 16mm COIN CELL HOLDERS

20mm THRU-HOLE MOUNT COIN CELL HOLDERS



- Advanced air-flow design enhances air circulation around battery
- Reliable spring tension assures low contact resistance
- Unique notched slots assure quick and easy battery insertion and replacement
- Retains battery securely to withstand shock and vibration
- PBT base material UL rated 94V-0. Impervious to most industrial solvents
- Operating temperature range: -60°F to +293°F (-50°C to +145°C)



- **Cat. No. 101** is designed to maximize PC Board Capacity
- Unique raised mounting design allows components to be placed underneath the holder
- Ideal when board space is more important than board height, such as PC/104 applicators

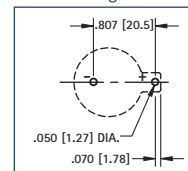
MATERIAL:

Contacts: .020 (.50) Spring Steel, Tin-Nickel Plate

Base: PBT, UL Rated 94V-0

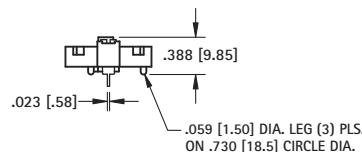
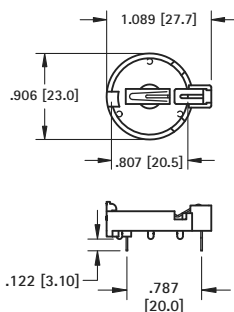
CAT. NO.	G	H	L	O.D.	NO. OF CELLS	BATTERY REFERENCE
103	.100 (2.5)	.335 (8.5)	1.130 (28.7)	.896 (22.8)	(1) cell (any 20mm) (2) 2012, (2) 2016	BR2012, CR2012, CR2016, CL2016, DL2020, CL2025, BR2025, CR2032, CL2032
101	.179 (4.6)	.414 (10.5)	1.130 (28.7)	.896 (22.8)	(1) cell (any 20mm) (2) 2012, (2) 2016	BR2012, CR2012, CR2016, CL2016, DL2020, CL2025, BR2025, CR2032, CL2032
106	.100 (2.5)	.335 (8.5)	1.219 (31.0)	1.093 (27.8)	(1) cell (any 20mm) (2) 2012, (2) 2016	BR2012, CR2012, CR2016, CL2016, DL2020, CL2025, BR2025, CR2032, CL2032
1026	.100 (2.5)	.452 (11.5)	1.219 (31.0)	1.093 (27.8)	(2) 2020, (2) 2025, (2) 2032	DL2020, CR2020, CL2025, BR2025, CR2032, CL2032

Mounting Detail

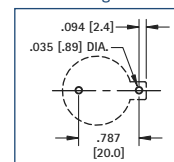


TOP LOADING

- Battery "Pop-in" from top for compact applications
- Finger pressure against lever will release battery
- No tools required for battery changes



Mounting Detail



MATERIAL:

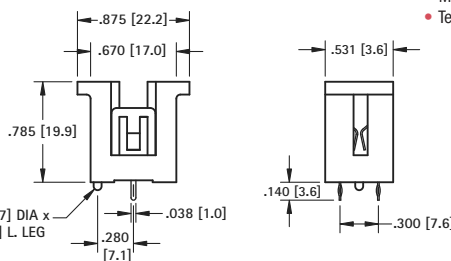
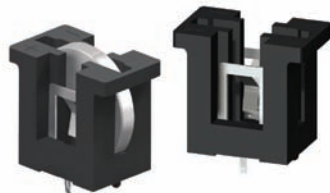
Contacts: .012 (.30) Phosphor Bronze, Tin Plate

Base: Nylon UL Rated 94V-0

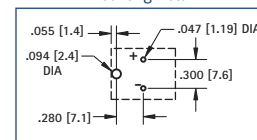
CAT. NO.	BATTERY REFERENCE
1066	BR2025, CR2032

VERTICAL COMPACT

- Accepts all major manufacturers' 20mm diameter batteries
- Molded notch prevents improper insertion of 2032 size cells
- Retains cells securely, withstands shock and vibration
- Polarity clearly marked
- Mounts securely for wave soldering
- Temperature range: -60°F to +293°F (-50°C to +145°C)



Mounting Detail



MATERIAL:

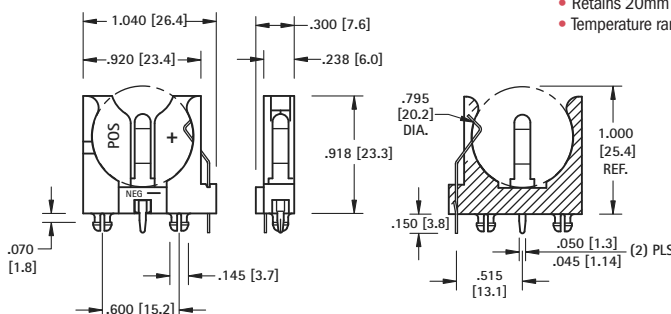
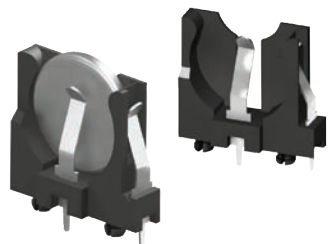
Contacts: .012 (.30) Spring Steel, Tin-Nickel Plate

Base: PBT, UL Rated 94V-0

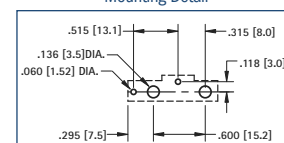
CAT. NO.	BATTERY REFERENCE
1067	CR2016, DL2020, CL2025, CR2032

VERTICAL SLIMLINE

- Polarized holder
- Mounts securely for wave soldering
- Reliable spring tension assures low contact resistance
- Retains 20mm batteries securely to withstand shock and vibration
- Temperature range -60°F to +293°F (-50°C to +145°C)



Mounting Detail



MATERIAL:

Contacts: .012 (.30) Spring Steel, Tin-Nickel Plate

Base: PBT, UL Rated 94V-0

CAT. NO.	BATTERY REFERENCE
1065	BR2012, CR2016, DL2020, CL2025, CR2032

THRU-HOLE (THM) & SURFACE MOUNT (SMT) COIN CELL HOLDERS

DESIGN ADVANTAGES...

- Reliable spring tension assures low contact resistance
- Retains battery securely to withstand shock and vibration
- All conductive polystyrene carrier tape meets ANSI/EIA - 481 standard

- Base material UL Rated 94V-0. Impervious to most industrial solvents
- Operating temperature range: -60°F to +293°F (-50°C to +145°C)

IDEALLY SUITED FOR...

- Computer memory, power transfer and back-up systems
- Video and telecommunications power back-up
- Microprocessors and Microcomputer memory hold (desktop and laptop applications)

- Industrial and commercial security and alarm systems
- Communications power sources
- PC/104 applications

20mm CELLS



- Polarity clearly marked (+)
- Compatible with vacuum and mechanical pick & place assembly systems
- Low profile for high density packaging
- Rugged construction, light weight
- SMT solder tail with "Flow-Hole" design for increased joint strength
- Viewable solder tails assures reliable joint inspection
- Safe for all soldering & reflow operations

MATERIAL:

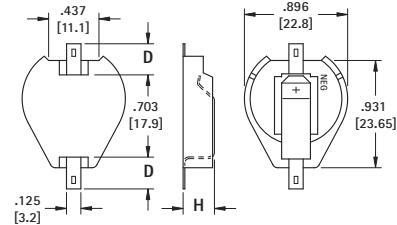
Contacts: .015 (.38) Spring Steel

Base: High Temperature, Nylon 46, UL Rated 94V-0

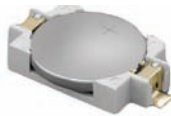
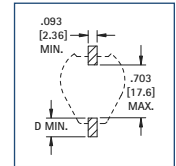
Tin-Nickel Plate		Gold Plate (Flash)		D PAD SIZE	H HEIGHT	CELLS	BATTERY REFERENCE
CAT. NO. BULK	ON TAPE & REEL	CAT. NO. BULK	ON TAPE & REEL				
1061	1061TR	1081	1081TR	.156 (4.0)	.290 (7.4)	(1) Cell (any 20mm)	CR2012, CL2016, BR2020, DL2032 CR2032
1063	1063TR	1093	1093TR	.278 (7.1)		(2) 2012, (2) 2016	
1062	1062TR	1082	1082TR	.156 (4.0)		(2) 2020, (2) 2025, (2) 2032	
1064	1064TR	1094	1094TR	.278 (7.1)	.391 (9.9)	(3) 2012, (3) 2016	

Tape & Reel Spec's: 44mm wide; 32mm pitch; 13 inch reel (200 pieces per reel)

AVAILABLE ON TAPE AND REEL



Pad Layout



Surface Mount

- Polarized Holder
- Low Profile for high density packaged PCB's

MATERIAL:

Contacts: .006 (.15) Phosphor Bronze,

Gold Plate (Flash)

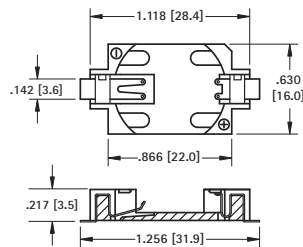
Base: Glass Filled LCP, UL Rated 94V-0

CAT. NO. BULK	ON TAPE & REEL	BATTERY REFERENCE
1060	1060TR	CR2025, DL2032

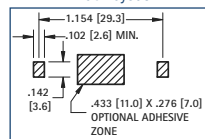
Tape & Reel Spec's: 44mm wide; 24mm pitch; 13 inch reel (500 pieces per reel)

AVAILABLE ON TAPE AND REEL

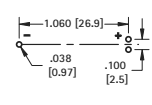
2025 / 2032 CELL



Pad Layout



Mounting Detail



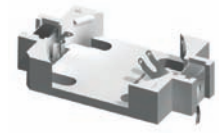
- Compatible with vacuum and mechanical pick & place assembly systems
- Low height
- Vertical entry

MATERIAL:

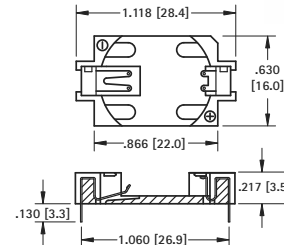
Contacts: .006 (.15) Phosphor Bronze, Tin Plate

Base: Glass Filled LCP, UL Rated 94V-0

CAT. NO.	BATTERY REFERENCE
1059	CR2025, DL2032



Thru Hole Mount



INSULATED RETAINERS

AVAILABLE ON TAPE AND REEL

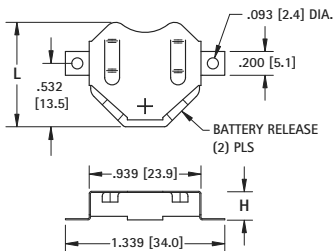
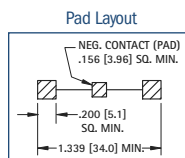
20mm CELLS

- Ideal for 6 volt or 3 volt applications
- Two coin cell batteries can be installed in series
- Plastic insulator prevents shorting of battery, within the holder, when installed improperly
- Low profile
- Battery release ports for easy battery replacement
- Refer to pages 6 & 7 for a complete offering of coin cell retainers

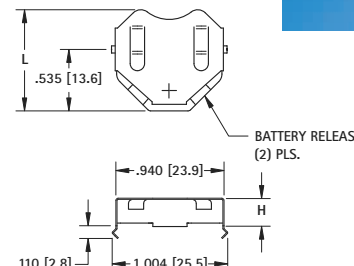
MATERIAL: Contacts: .010 (.25) Phosphor Bronze **Insulator:** High Temperature, Nylon 46, UL Rated 94V-0



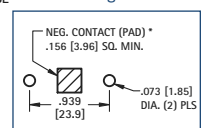
Surface Mount



Thru Hole Mount



Mounting Detail



Surface Mount						BATTERY REFERENCE		Thru Hole Mount			
Tin-Nickel Plate		Matte Tin Plate		L	H	6 VOLT (2) CELLS	3 VOLT (1) CELL	Tin-Nickel Plate			
CAT. NO. LOOSE*	CAT. NO. BULK	ON TAPE & REEL	CAT. NO. LOOSE*					CAT. NO. BULK	ON TAPE & REEL	CAT. NO. LOOSE*	CAT. NO. BULK
3020-2	3020	3020TR	3070-2	3070	3070TR	2012, 2016	2020, 2025	.890 (22.6)	.156 (4.0)	3021-2	3021
3022-2	3022	3022TR	3072-2	3072	3072TR	2020, 2025	2032	.877 (22.3)	.240 (6.1)	3023-2	3023
3024-2	3024	3024TR	3074-2	3074	3074TR	2032	Not Applicable	.877 (22.3)	.295 (7.5)	3025-2	3025

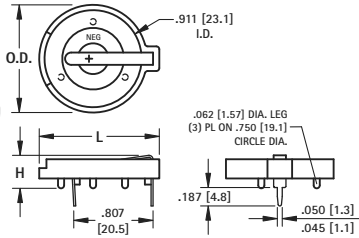
* Supplied Unassembled

Tape & Reel Spec's: 56mm wide; 28mm pitch; 13 inch reel: 3020TR, 3070TR 400 pieces per reel; 3022TR, 3072TR 250 pieces per reel; 3024TR, 3074TR 250 pieces per reel

THRU-HOLE (THM) & SURFACE MOUNT (SMT) COIN CELL HOLDERS

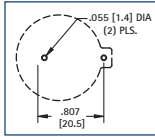
23mm

AVAILABLE ON TAPE AND REEL

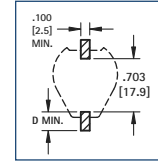


- Polarity clearly marked (+)
- Rugged construction, light weight
- SMT solder tail with "Flow-Hole" design for increased joint strength
- Viewable solder tails assures reliable joint inspection
- Safe for all soldering & reflow operations
- Compatible with vacuum and mechanical pick & place assembly systems

Mounting Detail



Surface Mount
Pad Layout



MATERIAL:

Contacts: .020 (.50) Spring Steel, Tin-Nickel Plate

Base: PBT, UL Rated 94V-0

Operating Temperature: -60°F to +293°F (-50°C to +145°C)

CAT. NO.	H	L	O.D.	NO. OF CELLS	BATTERY REFERENCE
104	.335 (8.5)	1.150 (29.2)	1.000 (25.4)	(1) Cell (Any 23mm)	BR2320, CR2320, CL2325, DL2330, CL2354, CR2335
107	.335 (8.5)	1.219 (31.0)	1.093 (27.8)	(1) Cell (Any 23mm)	
1027	.452 (11.5)	1.219 (31.0)	1.093 (27.8)	(2) 2320, (2) 2325, (2) 2330	

MATERIAL:

Contacts: .015 (.38) Spring Steel

Base: High Temp Nylon 46, UL Rated 94V-0

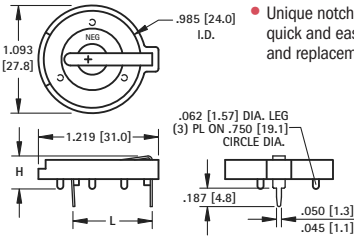
Operating Temperature: -60°F to +293°F (-50°C to +145°C)

Tin-Nickel Plate		Gold Plate (Flash)		D PAD SIZE	BATTERY REFERENCE
CAT. NO.	ON TAPE BULK & REEL	CAT. NO.	ON TAPE BULK & REEL		
1071	1071TR	1091	1091TR	.156 (4.0)	CR2320, CL2325,
1073	1073TR	1083	1083TR	.278 (7.1)	DL2330, CR2335

Tape & Reel Spec's: 44mm wide; 32mm pitch; 13 inch reel, (200 pieces per reel)

Note: All conductive polystyrene carrier tape meets ANSI/EIA - 481 standard

24mm

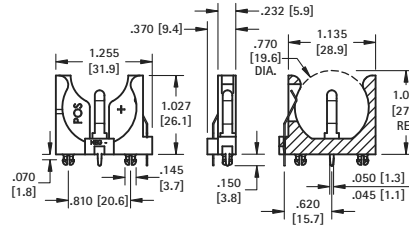


- Advanced air-flow design enhances air circulation around battery
- Unique notched slots assure quick and easy battery insertion and replacement

- Polarized holder
- Mounts securely for wave soldering
- Reliable spring tension assures low contact resistance



Thru Hole Mount



MATERIAL:

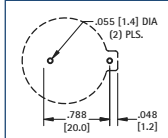
Base: PBT, UL Rated 94V-0

Contacts: .020 (.50) Spring Steel, Tin-Nickel Plate

Operating Temperature: -60°F to +293°F (-50°C to +145°C)

CAT. NO.	C	H	L	NO. OF CELLS	BATTERY REFERENCE
105	.064 (1.6)	.335 (8.5)	1.219 (31.0)	(1) 2430	CR2430, CL2430, BR2450, CR2477
1025	.064 (1.6)	.452 (11.5)	1.219 (31.0)	(1) 2450	
1025-7	.064 (1.6)	.503 (12.8)	1.219 (31.0)	(1) 2477	
				(2) 2430	

Mounting Detail



MATERIAL:

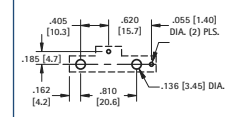
Base: PBT, UL Rated 94V-0

Contacts: .020 (.50) Spring Steel, Tin-Nickel Plate

Operating Temperature: -60°F to +293°F (-50°C to +145°C)

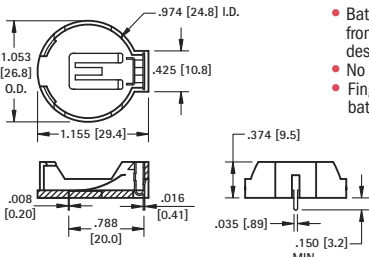
CAT. NO.	BATTERY REFERENCE
1068	(1) CR2450, (1) CL2450

Mounting Detail



24mm TOP LOADING

AVAILABLE ON TAPE AND REEL

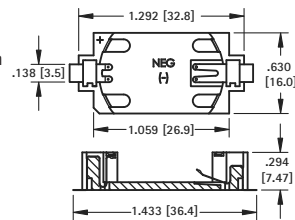


- Battery "Pop-in" from Top for compact designs
- No tools required
- Finger pressure battery release

- Polarized holder
- Low profile for densely packed PCB's
- Compatible with vacuum and mechanical pick & place systems
- Conductive carrier tape meets ANSA/EIA- 481 standard



Surface Mount



MATERIAL:

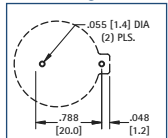
Contacts: Phosphor Bronze, Nickel Plate

Base: PBT, UL Rated 94V-0

Operating Temperature: -60°F to +293°F (-50°C to +145°C)

CAT. NO.	BATTERY REFERENCE
1053	(1) CR2450

Mounting Detail



MATERIAL:

Base: PBT, UL Rated 94V-0

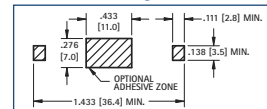
Contacts: .006 (.15) Phosphor Bronze, Gold Plate (Flash)

Operating Temperature: -60°F to +293°F (-50°C to +145°C)

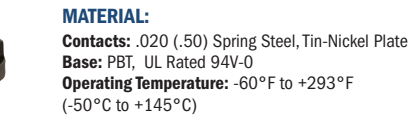
CAT. NO.	ON TAPE BULK & REEL	BATTERY REFERENCE
1052	1052TR	(1) CR2450

Tape & Reel Spec's: 56mm wide; 24mm pitch; 13 inch reel, (250 pieces per reel)

Mounting Detail



30mm



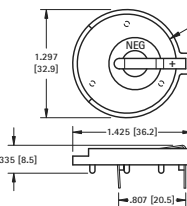
MATERIAL:

Contacts: .020 (.50) Spring Steel, Tin-Nickel Plate

Base: PBT, UL Rated 94V-0

Operating Temperature: -60°F to +293°F (-50°C to +145°C)

CAT. NO.	BATTERY REFERENCE
301	BR3032



Mounting Detail

